



Sold



67 Cabbage Tree Road, Bayview

5 🚗 3 🚗 2 🚗

## Classic Bayview Home - the Heart of Family Living

Auction Location: On Site

Lovingly maintained original two storey, brick and tile family home with backyard pool - perfect for large families in sought after Bayview. Neat and tidy, a perfect canvas to showcase your flair for styling and interior design set in beautifully manicured picturesque gardens. Large families or home renovators will appreciate the spacious design, flexible floorplan and convenience to a relaxed Pittwater lifestyle, cafes, local schools, boutique shopping village and your choice of some of Sydney's most stunning local beaches...

- Solid family home with a corner position and set on 700.2sqm of near level land
- A feature open fireplace is the heart of this home in the spacious formal living and dining area on the lower level
- Sizeable 80's retro kitchen, central to the living areas has original appliances, loads of cupboard storage and sizeable bench space with breakfast bar
- Large family room off the kitchen flows to an extensive enclosed entertaining terrace overlooking the pool
- Three good size bedrooms with built-ins, an expansive master suite with walk-in robe and ensuite, plus an optional 5th bedroom

**FOR SALE**

Classic Bayview Home

**AGENTS**

Kylie Segedin

0417 744 317

ksegedin@ljhmv.com.au

Melissa Pease

0414 673 273

mpease@ljhmv.com.au

**AGENCY**

LJ Hooker Mona Vale

(02) 9979 8000

All information contained therein is gathered from relevant third parties sources. We cannot guarantee or give any warranty about the information provided. Interested parties must rely solely on their own enquiries.

 **LJ Hooker**

- or study/home office
- Upstairs has a large full family bathroom with separate shower and bath. Additional guest bathroom on the lower level
- Huge double lock-up garage with auto doors, space for workbench or storage and secure internal access
- Immaculate gardens and leafy grounds with outdoor barbeque courtyard and in-ground pool
- With Winnereremy Bay parklands within a short walk to the waters' edge of Pittwater, marinas and Rowland Reserve
- Close to Mona Vale village shops, Flying Fox park, cafes and restaurants, golf course, schools and CBD transport. Enjoy a regular walks on one of Sydney's most popular and picturesque coastal pathways

'Family Ties' .. this quintessential 80's family home is ready and waiting the next generation to make it their own !

**Disclaimer:**

All information contained herewith, including but not limited to the general property description, price and the address, is provided to LJ Hooker Mona Vale by third parties. We have obtained this information from sources we believe to be reliable; however, we cannot guarantee its accuracy. The information contained herewith should not be relied upon and you should make your own enquiries and seek advice in respect of this property or any property on this website.

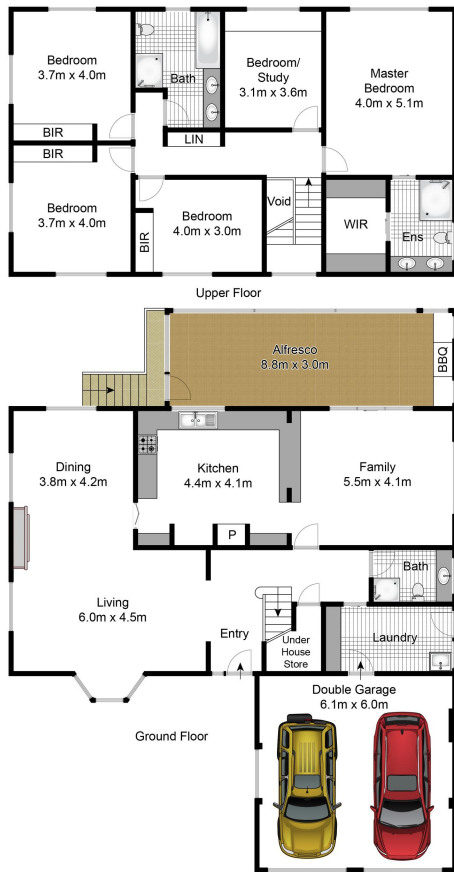
**MORE DETAILS**

Property ID	2WDXF6K
Property Type	House
Land Area	700.2 m2

**Kylie Segedin 0417 744 317**  
 Licensed Real Estate Agent | [ksegedin@ljhmv.com.au](mailto:ksegedin@ljhmv.com.au)  
**Melissa Pease 0414 673 273**  
 Licensed Real Estate Agent | [mpease@ljhmv.com.au](mailto:mpease@ljhmv.com.au)

**LJ Hooker Mona Vale (02) 9979 8000**  
 3/18 Bungan Street, MONA VALE NSW 2103  
[monavale.ljhooker.com.au](http://monavale.ljhooker.com.au) | [monavale@ljhmv.com.au](http://monavale@ljhmv.com.au)





Whilst [bwrm.com.au](http://bwrm.com.au) has made every attempt to ensure the accuracy of the floor plan contained here, measurements are approximate and no responsibility is taken for any error, omission, or mis-statement. This plan is for illustrative purposes only.



## 67 Cabbage Tree Road, Bayview



All information contained therein is gathered from relevant third parties sources. We cannot guarantee or give any warranty about the information provided. Interested parties must rely solely on their own enquiries.

