

64 Minkara Road, Bayview

Landmark Peter Muller Architecture - Japanese Inspired Residence

Set high on the eastern rise of Minkara Road, this Peter Muller iconic creation sits in quiet dialogue with its landscape, offering spectacular panoramas over Pittwater, Scotland Island, and the ocean beyond. Completed in 1988 and held by only two owners, the home carries Muller's unmistakable language, with cathedral ceilings, crafted timber finishes, and seamless garden-to-interior transitions. A sculpted rock garden by Japanese landscape master Masayoshi Uchiyama leads across a koi pond and bridge to interiors that feel serene and deeply attuned to nature. Living areas open wide to the environment, framing shifting water and headland vistas, while more intimate spaces provide privacy and flexibility, including the remarkable master suite with its tatami platform and fireplace, a dedicated media room and an additional rumpus room. Muller's adaptable architecture is evident throughout, with walls that retract, covered terraces that act as rooms and decks that can adapt to season and light. Landscaped ornamental grass gardens drift toward a billabong-style pool and a generous cabana designed for relaxed summer afternoons. In an exclusive and tranquil pocket that blends immersive natural beauty with everyday convenience, the home sits moments from Pittwater's

5 🏠 3 🚿 3 🚗

FOR SALE

North East Panoramic Pittwater Outlook
| EOI

VIEW

By Appointment

AGENTS

Melissa Pease
0414 673 273
mpease@ljhmv.com.au

Kylie Segedin
0417 744 317
ksegedin@ljhmv.com.au

AGENCY

LJ Hooker Mona Vale
(02) 9979 8000

All information contained therein is gathered from relevant third parties sources.
We cannot guarantee or give any warranty about the information provided.
Interested parties must rely solely on their own enquiries.

 LJ Hooker

edge, Mona Vale Village essentials, and a network of National Park walking trails, secluded beaches, and peaceful foreshore paths.

Features

- Architectural residence designed by Australia's iconic Peter Muller
- Signature Muller design with cathedral volumes and crafted detailing
- Set on 4,066sqm with sweeping views over Pittwater, Scotland Island, and the peninsula
- Folding walls and timber screens create adaptable indoor/outdoor zones
- Spectacular living with cathedral ceilings opening fluidly to dual covered terraces
- Sandstone accented Jetmaster fireplaces and elegant Jarrah flooring
- Spacious Dining Room with Pittwater views and Tasmanian Oak cabinetry
- Chef's kitchen with Miele and Bosch appliances, boiling and filtered tap, stone benchtop and timber finishes
- Palatial master suite with tatami platform, walk-in robe, and fireplace
- Four versatile upper bedrooms with built-ins plus a musician's loft
- Media room with Tasmanian oak cabinetry, NBN fibre and Foxtel Satellite
- Rumpus retreat with wet bar, storage, and adjoining balcony covered terrace
- Rear garden with sandstone paths, palms, grass trees, and lighting
- Cabana with wet bar, eight-person sauna, multi-jet shower
- Billabong-style saltwater pool and a vast deck for large gatherings
- Underfloor zoned reverse cycle air-conditioning on the ground floor
- Internal access to double garage, plus back-to-base security alarm
- Exclusive Bayview setting near cafes, Pittwater paths, boutique local village shopping, and renown beaches

Expressions Of Interest.

Inspection is strictly by appointment only.

Disclaimer:

All information contained herewith, including but not limited to the general property description, price and the address, is provided to LJ Hooker Mona Vale by third parties. We have obtained this information from sources we believe to be reliable; however, we cannot guarantee its accuracy. The information contained herewith should not be relied upon and you should make your own enquiries and seek advice in respect of this property or any property on this website.

MORE DETAILS

Property ID	2WHPF6K
Property Type	House
Land Area	4066 m2
Including	Air Conditioning
	Pool
	Balcony
	Deck
	Remote Garage

Melissa Pease 0414 673 273

Licensed Real Estate Agent | mpease@ljhmv.com.au

Kylie Segedin 0417 744 317

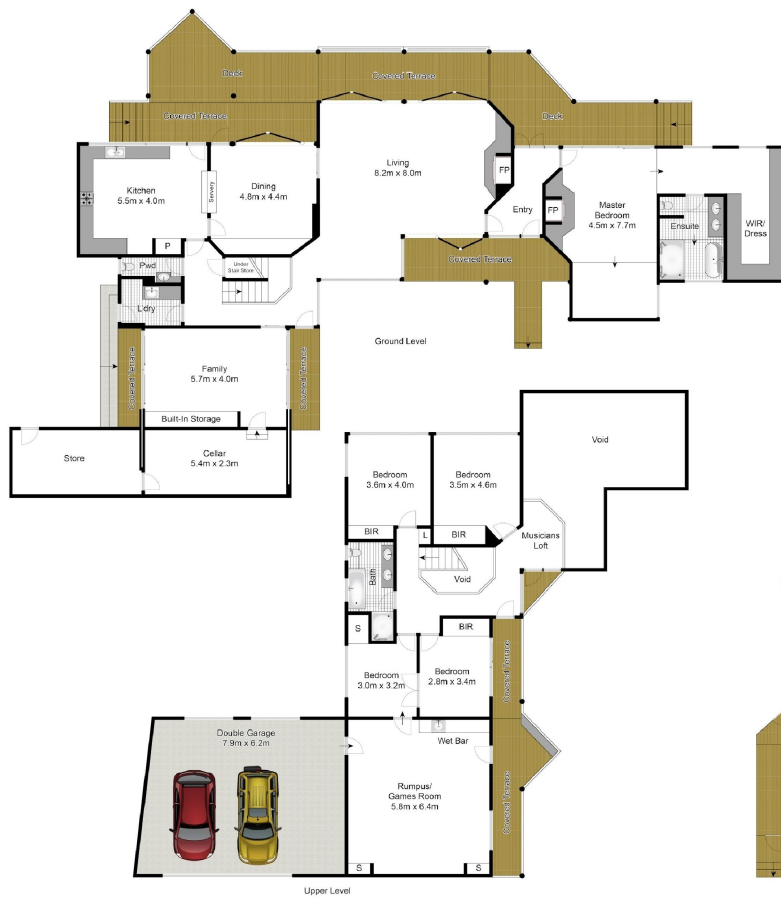
Licensed Real Estate Agent | ksegedin@ljhmv.com.au

LJ Hooker Mona Vale (02) 9979 8000

3/18 Bungan Street, MONA VALE NSW 2103

monavale.ljhooker.com.au | monavale@ljhmv.com.au





Site Plan



(Not In Position)

Whilst bwrm.com.au has made every attempt to ensure the accuracy of the floor plan contained here, measurements are approximate and no responsibility is taken for any error, omission, or mis-statement. This plan is for illustrative purposes only.



64 Minkara Road, Bayview



All information contained therein is gathered from relevant third parties sources. We cannot guarantee or give any warranty about the information provided. Interested parties must rely solely on their own enquiries.

