



37 Minkara Road, Bayview


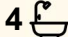

North Facing Resort-Style Estate with Expansive Gardens on 6380sqm

This luxurious family retreat is set snug in the landscape with a north-west aspect and lush rainforest gardens affording the sensation of living in your own secluded tropical paradise. Capturing sunset views over the Ku-ring-gai National Park to boat-studded Pittwater, the beautiful interiors are spread over three sun-drenched levels, with a separate self-contained wing, ideal to function as a private suite, perfect for guest or teen accommodation.

Deep decks create a natural extension of the interiors and effectively bring the outdoors in while a floodlit tennis court, spa, sauna and aqua therapy magnesium pool brings a relaxed resort-like vibe. Set on a sprawling 6380sqm landholding where the rainforest meets the coast, this is one of Sydney's secret treasures, located a few-minutes' drive to Mona Vale Beach, village, schools and marinas for days spent on Pittwater.

Features Include:

- Long driveway via lush native gardens creates a sense of arrival
- Floodlit tennis court, spa, sauna and aqua therapy magnesium

6  4  7 

FOR SALE

Guide \$5,650,000 - \$6,200,000

VIEW

By Appointment

AGENTS

Reade Havenstein
0413 859 742
rhavenstein@ljhnewport.com.au

Elizabeth Charlton
0457 177 060
lcharlton@ljhnewport.com.au

AGENCY

LJ Hooker Newport
(02) 9979 1111

All information contained therein is gathered from relevant third parties sources.
We cannot guarantee or give any warranty about the information provided.
Interested parties must rely solely on their own enquiries.

 **LJ Hooker**

- pool
- Multiple living area seamlessly extends to a choice of outdoor spaces
- Plenty of space in which to relax, play and entertain in complete privacy
- Fully enclosed alfresco room set against a striking stone rock face
- Separate self-contained wing, ideal for in-laws, guests or au pair
- Bathed in all-day natural light, magical sunsets, abundant wildlife
- Gourmet stone finished kitchen with stainless steel gas appliances
- Butler's pantry, walk-in pantry/preparation area, family-sized laundry
- Lounge room warmed by a natural fireplace, separate dining area
- Generously scaled bedrooms equipped with mirrored built-in robes
- Water-view master suite with moon-view bath opens to a choice of decks
- Designer bathrooms, study nook, 8-zone air conditioning, video intercom
- Auto two-car garage with internal access, ample space for a boat or trailer and loads of additional off-street parking

Contact Gordon on 0418 210 219 or Liz on 0457 177 060 to arrange a private inspection

Disclaimer:

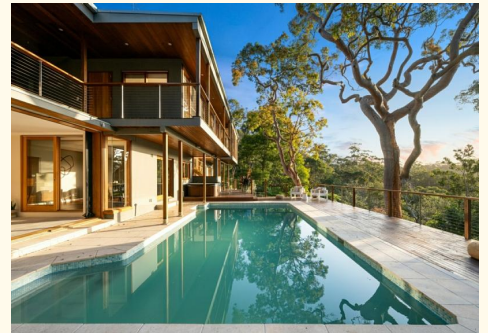
All information contained herewith, including but not limited to the general property description, price and the address, is provided to LJ Hooker Newport by third parties. We have obtained this information from sources we believe to be reliable; however, we cannot guarantee its accuracy. The information contained herewith should not be relied upon and you should make your own enquiries and seek advice in respect of this property or any property on this website.

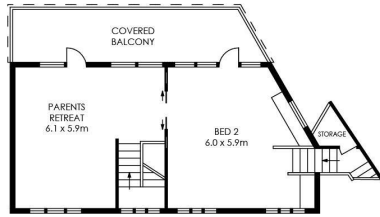
MORE DETAILS

Property ID 1AGKG5W
 Property Type House
 Land Area 6380 m2

Reade Havenstein 0413 859 742
 Sales Executive | rhavenstein@ljhnewport.com.au
Elizabeth Charlton 0457 177 060
 Executive Assistant | lcharlton@ljhnewport.com.au

LJ Hooker Newport (02) 9979 1111
 303 Barrenjoey Road, NEWPORT NSW 2106
 newport.ljhooker.com.au | newport@ljhnewport.com.au

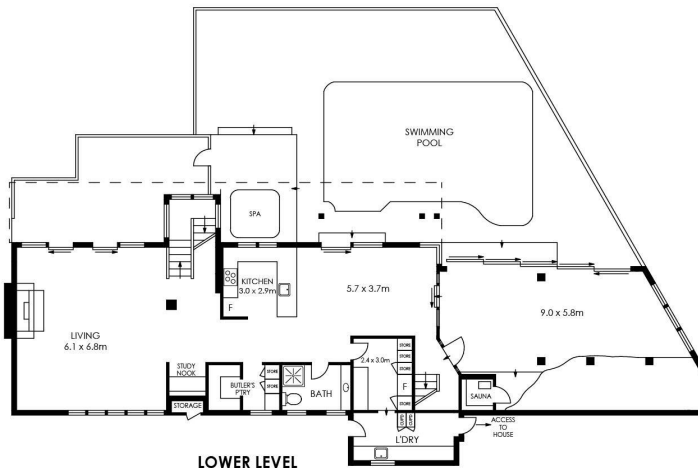




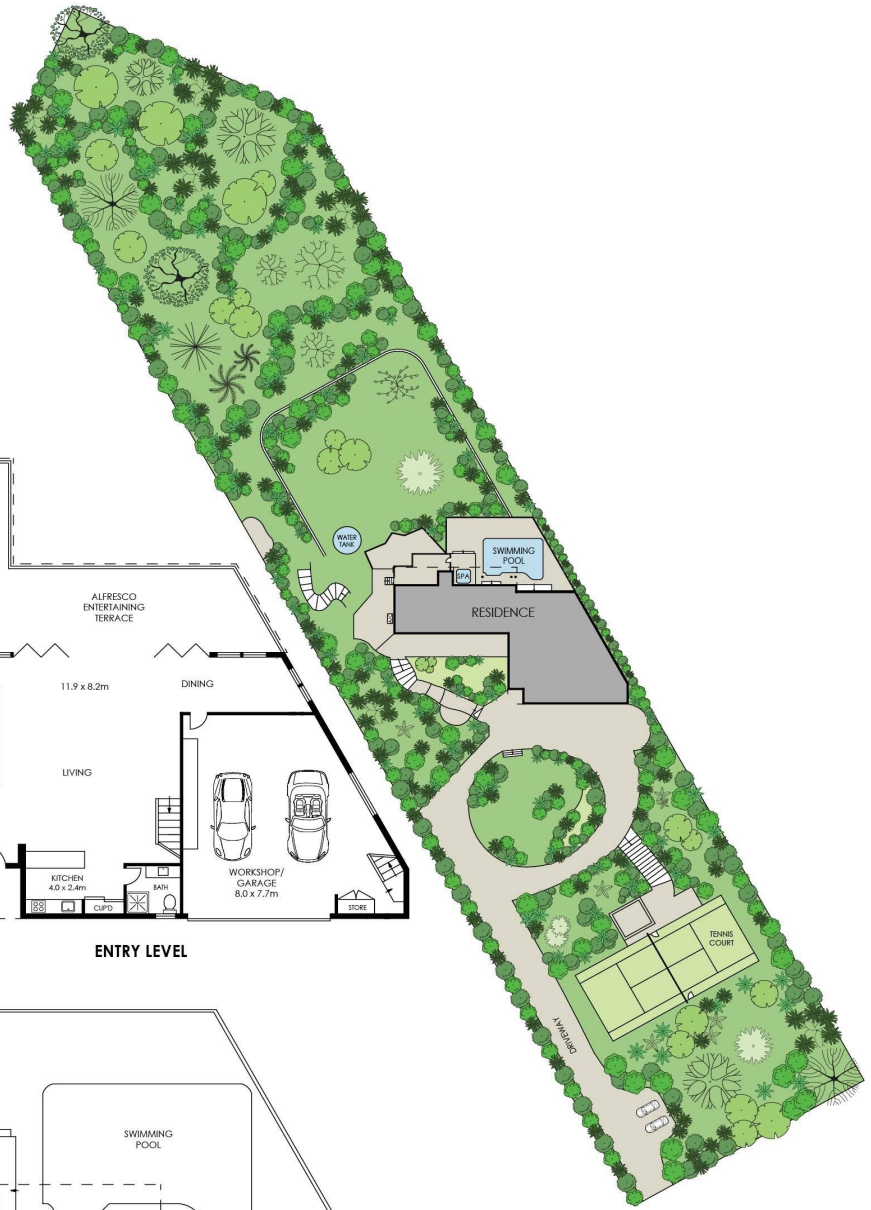
TOP LEVEL



ENTRY LEVEL



LOWER LEVEL



SITE PLAN
(NOT TO SCALE)

APPROX. INTERNAL AREA = 541 m²
 APPROX. EXTERNAL AREA = 251 m²
 TOTAL = 792 m²
 LAND SIZE = 6380 m²

PLANS SHOWN ONLY INDICATIVE OF LAYOUT. DIMENSIONS ARE APPROXIMATE.



37 Minkara Road, Bayview



All information contained therein is gathered from relevant third parties sources.
 We cannot guarantee or give any warranty about the information provided.
 Interested parties must rely solely on their own enquiries.

