

36 Loquat Valley Road, Bayview

4  2  2 

## Family Living at Its Finest with Space, Pool & Nature Views

Set on an expansive 1,220 sqm elevated parcel framed by lush greenery, this beautifully renovated residence captures the essence of relaxed coastal living. Designed for family versatility and outdoor entertaining, this multi-level home has clean architectural lines and showcases soaring cathedral ceilings, oak timber floorboards and a seamless indoor/outdoor flow that embraces its peaceful setting.

- Perfect fusion of modern family living and tranquil natural surrounds with a sun kissed North West aspect just moments from the shores of Pittwater
- Enjoy a 'holiday at home' vibe with a sparkling pool bordered by extensive sun decks for fun and lounging
- At the heart of the home, open-plan living and dining zones are warmed by a feature fireplace and extend to a covered alfresco balcony overlooking the pool and sprawling backyard - an idyllic haven for children, pets and weekend gatherings
- The gourmet kitchen is both stylish and functional, well appointed with stone benchtops, induction cooktop and quality appliances and perfectly positioned to connect with the living spaces and outdoor entertaining
- Accommodation is generous and thoughtfully designed with four well proportioned bedrooms with built-in wardrobes, high ceilings

**FOR SALE**  
Guide \$2,495,000

**VIEW**  
By Appointment

**AGENTS**  
Asha Kerr  
0451 635 535  
akerr@ljhmv.com.au

**AGENCY**  
LJ Hooker Mona Vale  
(02) 9979 8000

All information contained therein is gathered from relevant third parties sources.  
We cannot guarantee or give any warranty about the information provided.  
Interested parties must rely solely on their own enquiries.

 **LJ Hooker**

- and flooded with sunlight
- Versatile fourth bedroom could also function as a great office or teenage retreat
- Luxurious master with walk-in robe, indulgent ensuite with bath and calming water glimpses
- Two modern bathrooms plus powder room, including a main with floor-to-ceiling tiles and pleasing finishes
- Large rumpus room on the lower level with internal access to under-house storage presents exciting potential for future expansion or self contained accommodation (STCA)
- Plantation shutters, cathedral ceilings and ducted air conditioning enhance comfort and style throughout
- Double lock-up garage supported by a turning bay and internal access ensures practicality for busy families
- Loquat Valley Road is one of Bayview's most sought-after addresses, prized for its peaceful, nature rich environment and close-knit community feel. At the end of the street sits the highly regarded St Lukes Junior School - a major drawcard for families seeking quality education within walking distance
- " A leisurely stroll leads you to the foreshore of Pittwater, where cafés, marinas, sailing clubs and scenic walking trails invite you to embrace an enviable aquatic lifestyle. Weekends are spent paddle boarding at sunrise, boating across crystal clear waters, or enjoying brunch by the marina

Located in the prestigious suburb of Bayview, this is a rare opportunity to secure a substantial family home at an affordable price in a tightly held pocket where lifestyle, community and natural beauty converge.

**Disclaimer:**

All information contained herewith, including but not limited to the general property description, price and the address, is provided to LJ Hooker Mona Vale by third parties. We have obtained this information from sources we believe to be reliable; however, we cannot guarantee its accuracy. The information contained herewith should not be relied upon and you should make your own enquiries and seek advice in respect of this property or any property on this website.

**MORE DETAILS**

|               |         |
|---------------|---------|
| Property ID   | 2WMFF6K |
| Property Type | House   |
| Land Area     | 1223 m2 |
| Including     | Ensuite |

**Asha Kerr 0451 635 535**

Licensed Real Estate Agent | [akerr@ljhmv.com.au](mailto:akerr@ljhmv.com.au)

**LJ Hooker Mona Vale (02) 9979 8000**

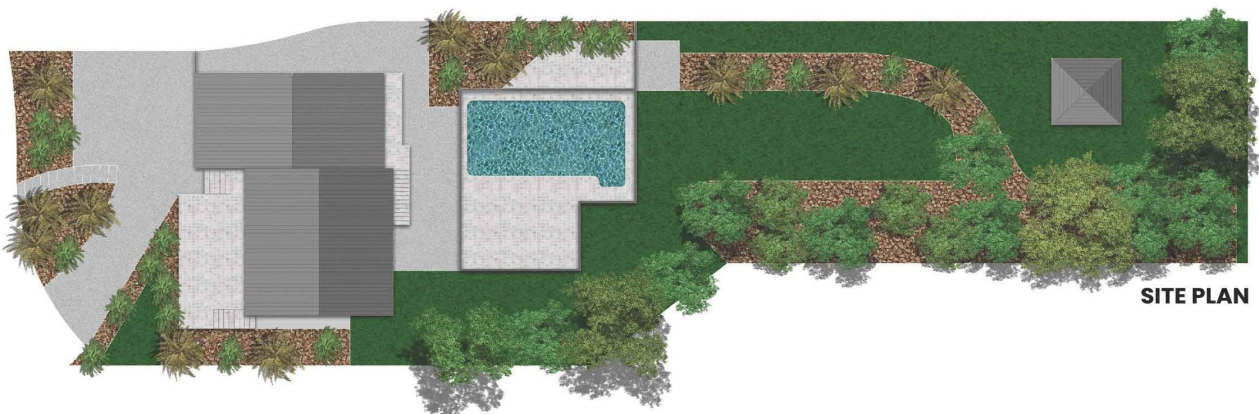
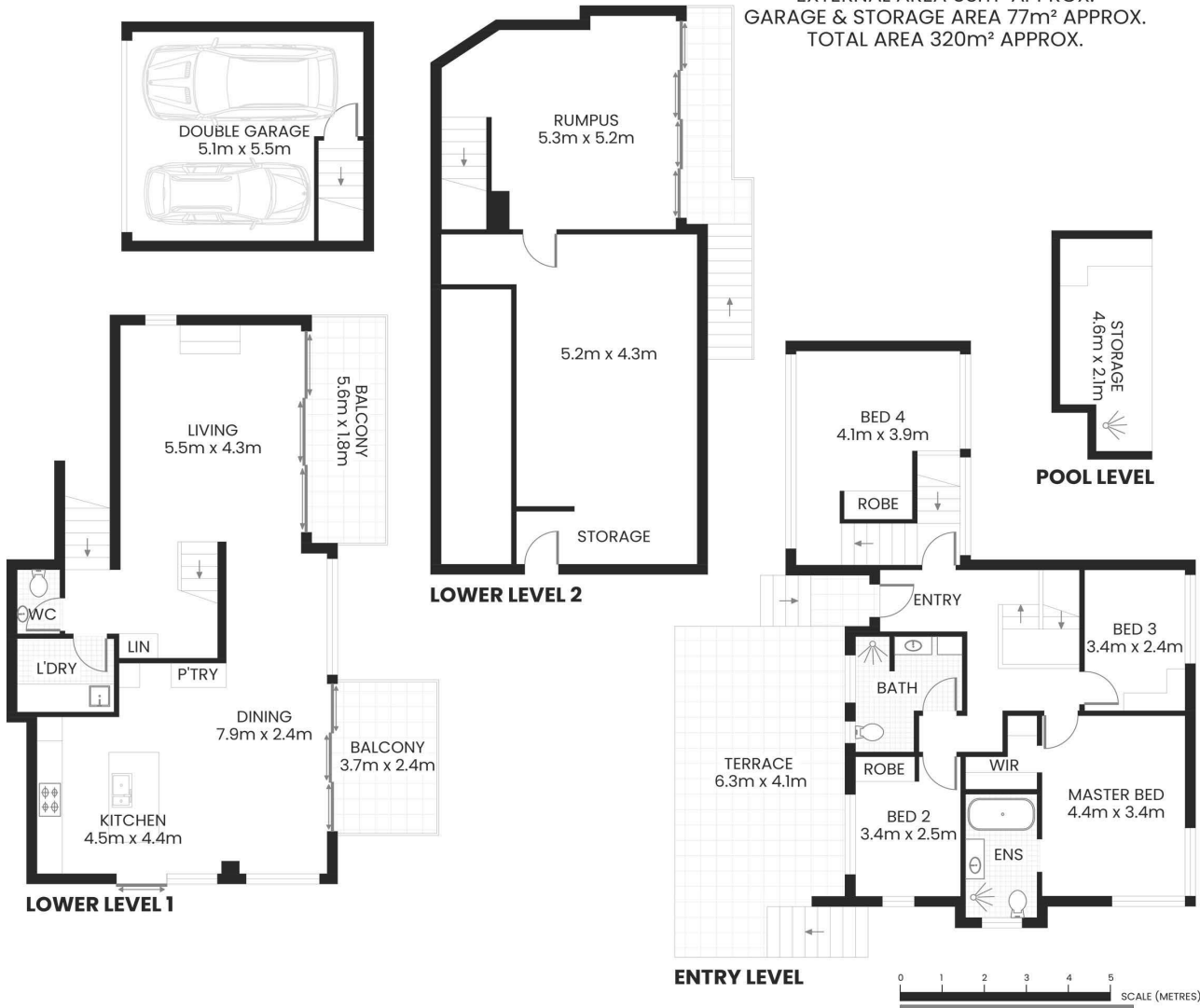
3/18 Bungan Street, MONA VALE NSW 2103  
[monavale.ljhooker.com.au](http://monavale.ljhooker.com.au) | [monavale@ljhmv.com.au](mailto:monavale@ljhmv.com.au)





# Bayview 36 Loquat Valley Road

INTERNAL AREA 190m<sup>2</sup> APPROX.  
EXTERNAL AREA 53m<sup>2</sup> APPROX.  
GARAGE & STORAGE AREA 77m<sup>2</sup> APPROX.  
TOTAL AREA 320m<sup>2</sup> APPROX.



**SITE PLAN**

The site plan and floor plan are not to scale; measurements are indicative and in meters. Bushes and trees are placed for illustration purposes. Plans should not be relied on. Interested parties should make and rely on their own enquiries. All other information provided has been collected from reliable sources but cannot be guaranteed for accuracy.

All information contained therein is gathered from relevant third parties sources.  
We cannot guarantee or give any warranty about the information provided.  
Interested parties must rely solely on their own enquiries.