



Bayview, 3 Lentara Road

Architectural Excellence Meets Resort Style Living on a Secluded One Acre Estate

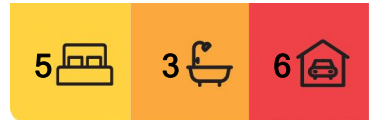
Perched on a sprawling one-acre estate along Bayview's most coveted address, this architect-designed residence is a true masterpiece. Honoured with the top prize from the Master Builders Association in 2022, it blends bold, striking forms with a seamless flow of light and space, delivering a home that's both sophisticated and effortlessly liveable.

The innovative layout maximizes stunning ocean and landscape views, featuring three distinct wings—one for children, one for parents, and another for guests—paired with three versatile living areas. Expansive windows flood the interiors with northern sunlight, while extensive skylights and an open design enhance the airy, luminous feel.

The property covers a full level and usable acre, blanketed with lush green lawns and dotted with natives; the exquisite gardens are finished with reclaimed timber and sandstone, creating an extraordinarily private backdrop for the 12m saltwater pool and



Disclaimer: All information contained therein is gathered from relevant third parties sources. We cannot guarantee or give any warranty about the information provided. Interested parties must rely solely on their own enquiries.



For Sale
Under Offer

View
ljhooker.com.au/2W10F6K

Contact
Ryan Petrie
0403 988 123
rpetrie@ljhmv.com.au
Simone Novak
0418 601 599
snovak@ljhmv.com.au

LJ Hooker Mona Vale
(02) 9979 8000

endless horizon views.

- * Architect designed; awarded top prize by Master Builders Assoc.
- * Set on a level acre amid gardens, lush green lawns + towering gums
- * Premium quality design + build; three living zones across two levels
- * Stunning entertaining terrace on the main floor delivers ocean views
- * Fully self-contained guest suite at pool level + servery to the deck
- * Purpose-built home office plus separate study or fifth bedroom
- * Expansive alfresco deck, 12m resort-style pool, fabulous firepit area
- * Top-of-the-line kitchen, Siemens appliances, hidden butler's pantry
- * Master wing boasts superb views, luxe ensuite, walk-in robes + lounge
- * Elegant bedrooms; all bathrooms include heated floors + towel racks
- * Temp controlled wine cellar at pool level; holds up to 1,500 bottles
- * Ducted/zoned climate control, 13.2kW solar, main gas connection
- * Established garden and fruit trees edged with vintage sandstone borders
- * Four-car garage w/internal access; room for boats or campervans
- * Fully fenced property; electronically gated, 18,000ltr water tanks

Luxurious living in peaceful seclusion yet only a 15 min walk to St. Lukes Preparatory School and the many amenities on Bayview's foreshore. While the vibrant Mona Vale shopping village and the B-Line a short 7 min drive away.

Disclaimer:

All information contained herewith, including but not limited to the general property description, price and the address, is provided to LJ Hooker Mona Vale by third parties. We have obtained this information from sources we believe to be reliable; however, we cannot guarantee its accuracy. The information contained herewith should not be relied upon and you should make your own enquiries and seek advice in respect of this property or any property on this website.

More About this Property

Property ID	2W10F6K
Property Type	House
Land Area	4016 m2

Ryan Petrie 0403 988 123

Licensed Real Estate Agent | rpetrie@ljhmv.com.au

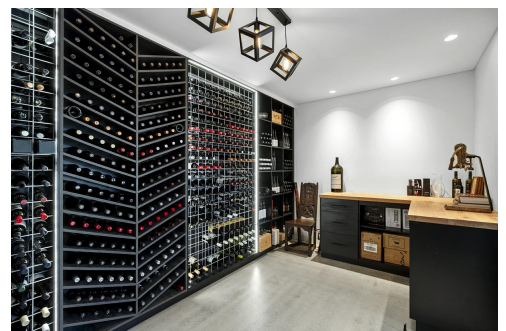
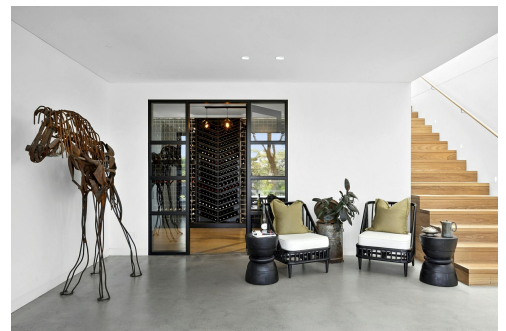
Simone Novak 0418 601 599

Licensed Real Estate Agent | snovak@ljhmv.com.au

LJ Hooker Mona Vale (02) 9979 8000

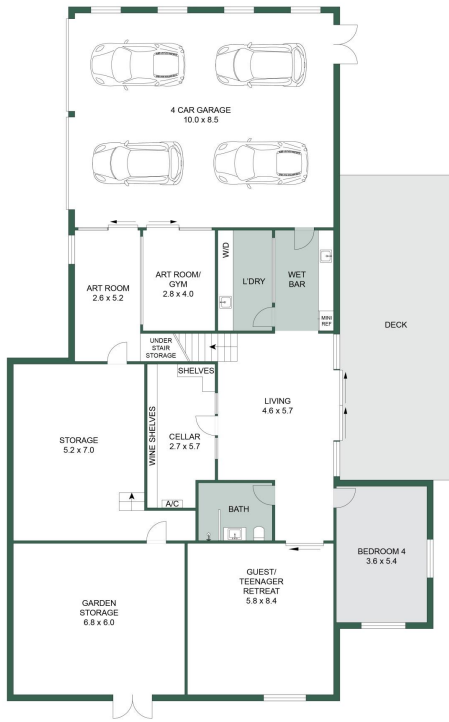
3/18 Bungan Street, MONA VALE NSW 2103

monavale.ljhooker.com.au | monavale@ljhmv.com.au

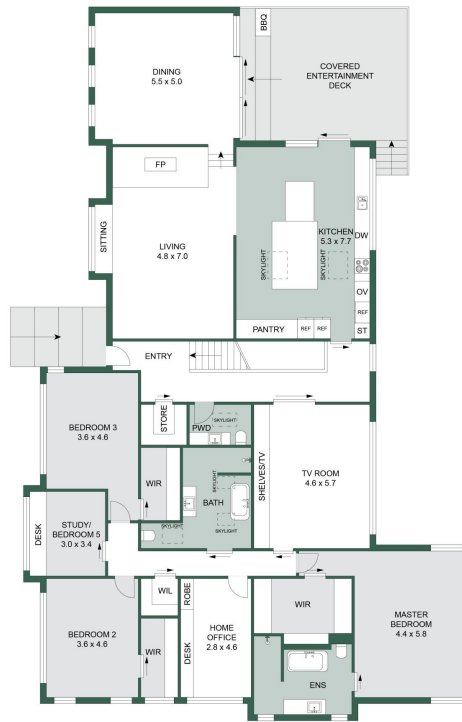


**LJ Hooker Mona Vale
(02) 9979 8000**

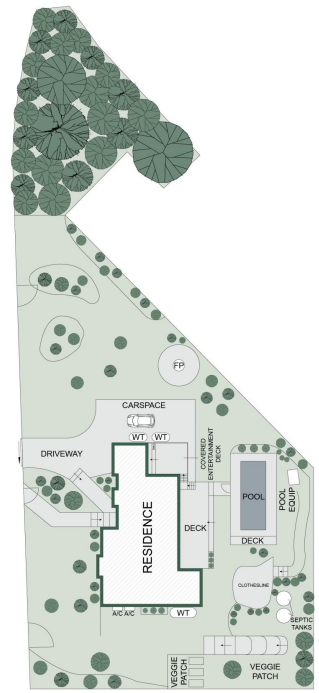
Disclaimer: All information contained therein is gathered from relevant third parties sources. We cannot guarantee or give any warranty about the information provided. Interested parties must rely solely on their own enquiries.



LOWER FLOOR



GROUND FLOOR



SITE PLAN

LJ Hooker Mona Vale

The site plan and floor plan are not to scale; measurements are indicative and in metres. Bushes and trees are placed for illustration purposes. Plans should not be relied on. Interested parties should make and rely on their own enquiries.

