



26 Lentara Road, Bayview

An Acre of Coastal Grandeur with Pittwater and Ocean Views

Commanding just over an acre, this exquisite single level residence embodies a sense of quiet grandeur and enduring prestige reserved for truly exceptional blue ribbon estates. Period elegance defines the interiors through ornate plasterwork and refined picture windows, while etched limestone detailing enriches the exterior, framing leafy outlooks across boat studded Pittwater to the ocean, where the moon casts its evening glow. Grand yet deeply liveable, it offers a rare sense of scale without excess, inviting long lunches on the verandah or alfresco pavilion, unhurried afternoons in the sun drenched garden and an immediate exhale on arrival. Privacy is complete and nature feels ever present, with wallabies a familiar sight, while village shops and cafés remain close at hand. A unique coastal home for those unwilling to compromise on style, serenity or address.

- 4,093sqm of professionally landscaped grounds by Secret Gardens, include golf course like rolling lawns, stunning stone terracing, alfresco pavilion ready to host a wedding, established flourishing gardens and ancient pink angophora
- Wide intimate views of Pittwater's boat studded waters to the ocean and horizon beyond
- Refined double brick single level residence, recently fully renovated with the highest attention to detail and an enduring

3 2 4

FOR SALE

Auction

VIEW

Sat 21st Feb @ 11:45AM - 12:15PM

AGENTS

Ryan Petrie
0403 988 123
rpetrie@ljhm.com.au

AGENCY

LJ Hooker Mona Vale
(02) 9979 8000

All information contained therein is gathered from relevant third parties sources.
We cannot guarantee or give any warranty about the information provided.
Interested parties must rely solely on their own enquiries.



- sense of quality
- Gated entry opens you to a private and tranquil setting full of sun rays and birdsong
- Timber window pane doors opening toward Pittwater views and the Northerly light on a full length balcony
- Sublime grand living zone with rich dark timber floors, chandelier, ornate cathedral ceiling with stunning period detailing and warmed by a gas fireplace
- Shaker style gourmet kitchen with induction and gas cooking combines with casual dining and flows through stacking doors to the limestone clad patio
- Generous bedrooms all with pretty vistas and soaring 10ft ceilings, gorgeous master with large stone ensuite and a dream walk-in robe
- Elegant bathrooms, separate bath, waterfall shower
- Recently crafted alfresco entertaining pavilion with a built-in BBQ and brace outdoor lighting provides the perfect setting for large scale entertaining overlooking the park like grounds
- Oversized double lock-up garage could fit 4 small cars, has a workshop and internal access
- 10kw solar system with Tesla battery takes you 97% off the grid, rainwater and Bore water tanks feed the robust irrigation system
- Superbly located moments to waterside cafes, eateries, yacht clubs, village shops, golf courses, and express city buses

This beautiful estate like home is perfectly suited to a couple or small family looking for the 'right-size' home with privacy and enduring quality in a environment that will enrich their soul.

Disclaimer:

All information contained herewith, including but not limited to the general property description, price and the address, is provided to LJ Hooker Mona Vale by third parties. We have obtained this information from sources we believe to be reliable; however, we cannot guarantee its accuracy. The information contained herewith should not be relied upon and you should make your own enquiries and seek advice in respect of this property or any property on this website.

MORE DETAILS

Property ID	2WMKF6K
Property Type	House
Land Area	4095 m2
Including	Ensuite

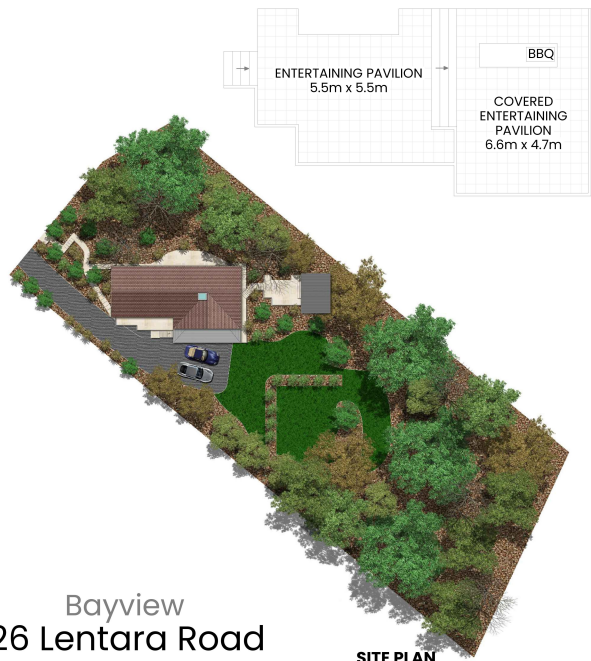
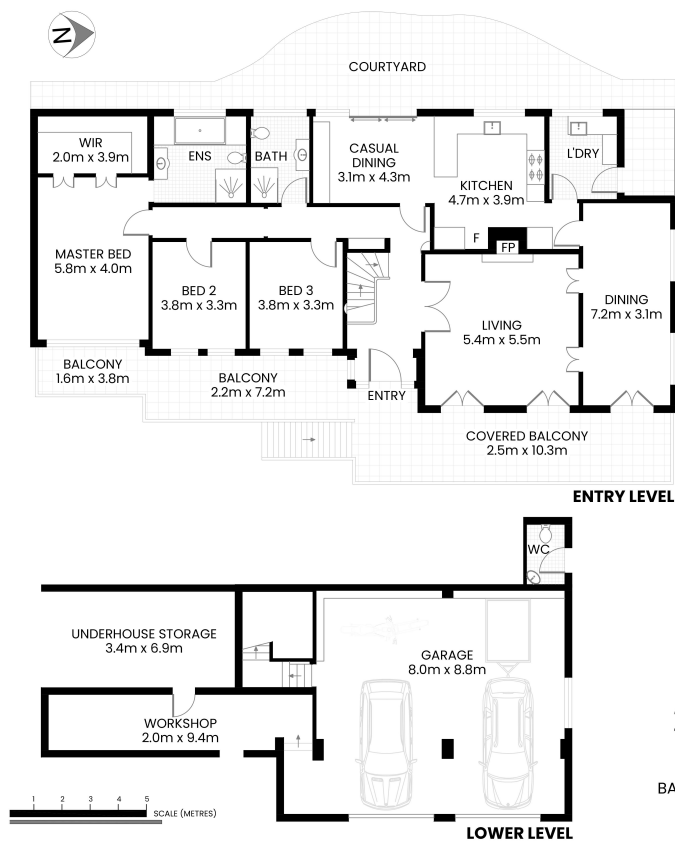
Ryan Petrie 0403 988 123

Licensed Real Estate Agent | rpetrie@ljhmv.com.au

LJ Hooker Mona Vale (02) 9979 8000

3/18 Bungan Street, MONA VALE NSW 2103
monavale.ljhooker.com.au | monavale@ljhmv.com.au





Bayview 26 Lentara Road

INTERNAL AREA 327m² APPROX.
INCL LOWER LEVEL
BALCONY & PAVILION AREA 118m² APPROX.
TOTAL AREA 445m² APPROX.



The site plan and floor plan are not to scale; measurements are indicative and in meters. Bushes and trees are placed for illustration purposes. Plans should not be relied on. Interested parties should make and rely on their own enquiry. All other information provided has been collected from reliable sources but cannot be guaranteed for accuracy.