



Bayview

Timeless Luxury, Privacy & Spectacular Views

A bespoke coastal sanctuary showcasing an extraordinary fusion of architectural brilliance and natural beauty. This stunning residence commands a prestigious 4,553sqm estate, offering an unrivalled position with rare sweeping views to Lion Island, across to Pittwater's yachting paradise and the Pacific Ocean beyond. Masterfully designed by Jim O'Brien with Feng Shui principles at its core, this home represents the pinnacle of sophisticated living with its seamless integration of luxury, functionality, and breathtaking views from every room...

- * Architecturally designed with soaring ceilings and dramatic angles to maximize views and light
- * Premium chef's kitchen featuring Wolf appliances, integrated Leibherr refrigeration, and butler's pantry
- * Expansive open-plan living spaces flowing to entertainment terrace with coastal outlook
- * Master suite with deluxe walk-in robe and ensuite overlooking private Zen garden



Disclaimer: All information contained therein is gathered from relevant third parties sources. We cannot guarantee or give any warranty about the information provided. Interested parties must rely solely on their own enquiries.



For Sale

"A Bayview Masterpiece" - Expressions of Interest

View

By Appointment

Contact

Kylie Segedin

0417 744 317

ksegedin@ljhmv.com.au

LJ Hooker Mona Vale
(02) 9979 8000

- * Three additional bedrooms plus study, 5 designer bathrooms
- * Self-contained lower-level retreat with bedroom, living area, and kitchenette
- * Heated 12-meter saltwater pool with granite surrounds
- * Dual Cheminees Philippe slow combustion fireplaces
- * Premium finishes including French oak flooring, Concordia honed marble, and polished plaster walls
- * State-of-the-art 13kw solar system with 36 panels
- * Sustainable features including Envirocycle wastewater system and water tanks
- * Automated systems throughout including Velux skylights, external blinds, and Dali lighting
- * Internal access from double garage with EV charging. Additional off-street parking
- * Zen gardens and native landscaping of grounds
- * Quiet cul-de-sac position minutes from Mona Vale village and beaches

This remarkable residence offers striking Pittwater Panoramas with the perfect blend of sophisticated design and practical luxury. A home ideal for families or for downsizers seeking single level living, without compromising on space and the finest quality features.

Disclaimer:

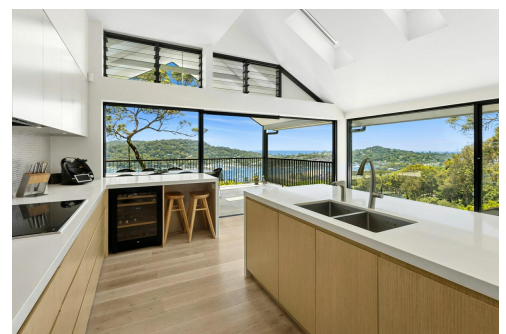
All information contained herewith, including but not limited to the general property description, price and the address, is provided to LJ Hooker Mona Vale by third parties. We have obtained this information from sources we believe to be reliable; however, we cannot guarantee its accuracy. The information contained herewith should not be relied upon and you should make your own enquiries and seek advice in respect of this property or any property on this website.

More About this Property

Property ID	2VVMF6K
Property Type	House

Kylie Segedin 0417 744 317
 Licensed Real Estate Agent | ksegedin@ljhmv.com.au

LJ Hooker Mona Vale (02) 9979 8000
 3/18 Bungan Street, MONA VALE NSW 2103
 monavale.ljhooker.com.au | monavale@ljhmv.com.au



LJ Hooker Mona Vale
(02) 9979 8000

Disclaimer: All information contained therein is gathered from relevant third parties sources. We cannot guarantee or give any warranty about the information provided. Interested parties must rely solely on their own enquiries.