

Bateau Bay, 9 Premier Way

Perfectly Presented Single Level Home!!

Presenting this unique family home with an amazing feeling of air, space, light and privacy and occupying a premium position. Located in the sought after suburb of Bateau Bay, this immaculate family home is found within only minutes drive to some of the Central Coast finest beaches and lifestyle choices, and a short drive to freeway connecting Sydney and Newcastle. This stunning property is looking for new owners and will suit all types of buyers looking for that something special! The home showcases the perfect lifestyle to ensure indoor and outdoor living flows seamlessly at its best. Expansive open plan living for entertaining and relaxing, spacious alfresco outdoor area overlooking generous sized backyard.

- * Three good sized bedrooms with ensuite to main.
- * Generous open plan lounge/formal dining area with plenty of natural light.
- * Large timber kitchen with state of the art appliances.
- * Huge family room with its own bar & distance valley views.



For Sale
Please Call

View
ljhooker.com.au/WGQGJF

Contact
Craig Trehearne
0478 072 257
craig.trehearne@ljhooker.com.au



Disclaimer: All information contained therein is gathered from relevant third parties sources. We cannot guarantee or give any warranty about the information provided. Interested parties must rely solely on their own enquiries.

**LJ Hooker Tumby Umbi | Killarney
Vale | Bateau Bay
(02) 4389 1722**

- * Two / Three car garage, with plenty of off street parking and extra storage space.
- * Massive under house storage and workshop space.
- * Stylish main bathroom accommodating all bedrooms.
- * Ducted air conditioning, stylish combustion fireplace in formal lounge.
- * Stunning presentation throughout and surely to impress.
- * Owners seeking offers today! Contact Craig for inspection times.

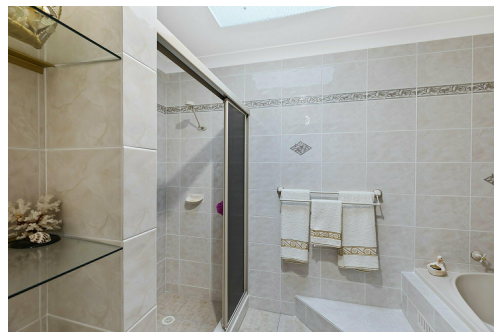
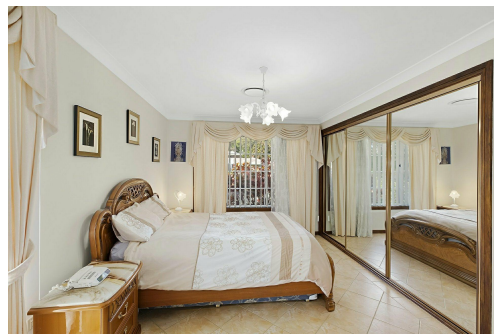
Disclaimer: All information contained herein is gathered from sources we consider to be reliable, however we cannot guarantee or give any warranty about the information provided. All images, border/s, property boundaries and floor plans are indicative of the property and for illustrative purposes only. Any development potential stated herein is suggestive only and may be subject to relevant approvals, as such it is not to be relied upon. All distances and measurements are approximate. Interested parties must solely rely on their own enquiries.

More About this Property

Property ID	WGQGJF
Property Type	House
Land Area	544 m2

Craig Trehearne 0478 072 257
 Sales Consultant L.R.E.A | craig.trehearne@ljhooker.com.au

LJ Hooker Tumbi Umbi | Killarney Vale | Bateau Bay (02) 4389 1722
 Shop 2, 140 Wyong Road, KILLARNEY VALE NSW 2261
tumbiumbi.ljhooker.com.au | tumbiumbi@ljhooker.com.au



Disclaimer: All information contained therein is gathered from relevant third parties sources. We cannot guarantee or give any warranty about the information provided. Interested parties must rely solely on their own enquiries.

**LJ Hooker Tumbi Umbi | Killarney
 Vale | Bateau Bay
 (02) 4389 1722**

