



6 Parklands Close, Bateau Bay

A Luxurious Modern Mediterranean Retreat Minutes from the Beach

Positioned on an elevated 699sqm block walking distance to the beach, this modern Mediterranean-inspired retreat is designed to offer a luxurious yet low-maintenance coastal lifestyle for a family looking for their forever home.

From the striking steel-framed doors and windows to the travertine tiles and antique brass tapware throughout, every detail has been expertly curated to create a cohesive and contemporary home with an on-trend yet timeless aesthetic.

Set across three levels, the split-level floorplan allows ample space and flexibility for a family to live and entertain with ease. The open-plan kitchen, living and dining zone that connects to expansive outdoor entertaining terrace occupies the entire top floor, while the bedrooms, main bathroom, secondary living area, and combined laundry/bathroom are all located on the lower two levels.

Outside a flourishing Mediterranean-style garden with level lawn area provides the perfect place for kids and pets to play, with enough

4 3 2

FOR SALE
Contact Agent

VIEW
By Appointment

AGENTS
Matthew Farrugia
0403 661 499
matthew.farrugia@ljhooker.com.au

Harry Gray
0421 954 410
harry.gray@ljhooker.com.au

AGENCY
LJ Hooker Terrigal
(02) 4385 8444

All information contained therein is gathered from relevant third parties sources.
We cannot guarantee or give any warranty about the information provided.
Interested parties must rely solely on their own enquiries.

LJ Hooker

space to add a pool, shed or granny flat down the track if desired.

Don't miss your chance to enjoy all of the benefits of living in a brand-new home without the burden that comes with renovating and building - start living the dream straight away!

Key features:

- Meticulously renovated by Link Construction, this home showcases exceptional attention to detail and quality craftsmanship throughout
- Renovated split-level home on an elevated 669sqm block, walking distance to the beach
- 4 oversized bedrooms all with built-in robes. Master bedroom boasts large walk-in robe and luxurious ensuite with an operable Velux skylight that floods the space with natural light
- Main bathroom boasts a beautiful natural travertine feature wall. All bathrooms feature underfloor heating and antique brass tapware
- Custom-designed kitchen with walnut cabinetry, natural stone Quartzite benchtops, dedicated appliance cupboard, and SMEG appliances (900mm oven, induction cooktop, rangehood and integrated dishwasher)
- Large combined laundry/bathroom with walnut cabinetry and stylish curved shower
- Ducted AC throughout, with one split system to service the lowest level rumpus room
- American Oak engineered flooring throughout and carpet in all bedrooms
- Covered outdoor entertaining terrace with natural stone tiling and custom outdoor BBQ kitchen, including Beef Eater BBQ and Vintec wine fridge
- Mediterranean-inspired gardens, including herb garden and fruiting citrus and olive trees
- Large level lawn area offers ample space for a pool or granny flat (subject to council approval) with rear access
- Natural cobblestone driveway and double automated lock-up garage, plus generous under house storage
- 20-minute walk or 4-minute drive to Bateau Bay Beach
- 5 minutes to Bateau Bay Square shopping centre and 15-minutes to Erina Fair or Westfield Tuggerah shopping malls

MORE DETAILS

Property ID 1HAEGC1
Property Type House
Land Area 699 m2
Including Ensuite
Air Conditioning
Dishwasher
Built-in-Robes
Area Views
Close to Schools
Close to Shops
Close to Transport
Garage
Gas
Internal Laundry

Matthew Farrugia 0403 661 499

Director / Sales Specialist - LREA |
matthew.farrugia@ljhooker.com.au

Harry Gray 0421 954 410

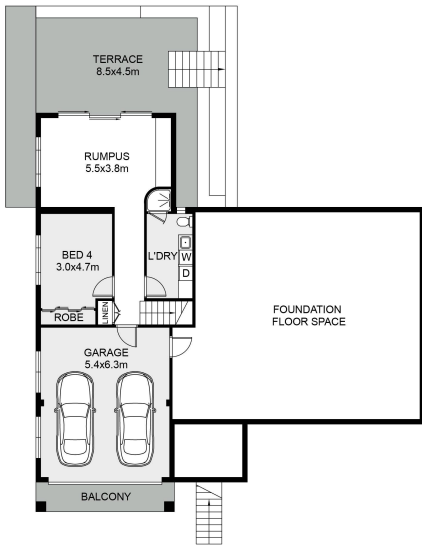
Sales Associate to Matthew Farrugia | harry.gray@ljhooker.com.au

LJ Hooker Terrigal (02) 4385 8444

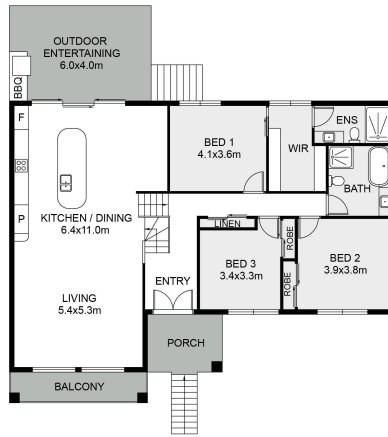
Shop 1 & 2, 1 Campbell Crescent, TERRIGAL NSW 2260
terrigan.ljhooker.com.au | terrigan@ljhooker.com.au



6 Parklands Close Bateau Bay



GROUND FLOOR



FIRST FLOOR



SITE PLAN

Scale in meter. Indicative only. Measurement and dimensions are approximate.
 All information contained herein is gathered from source we believe to be reliable.
 However we cannot guarantee its accuracy and interested persons should rely on their own enquiries.

