

18 Debra Anne Drive, Bateau Bay

Great Family Starter or Investment!

Set in a popular suburb within close proximity to local amenities, is this ideal starter or investment property; at an entry level price to the Bateau Bay market.

Updated since its original build but still leaving you scope to add value.

Be quick to view 18 Debra Anne Drive, Bateau Bay.

Inside you will be greeted by:

- Main living area with fireplace.
- Kitchen with modern appliances and gas cook top.
- Three bedrooms all with built in robes.
- Updated bathroom with separate bath and shower.

3  1  1 

FOR SALE
Contact Agent

AGENTS

Justin Bond
0406 999 007
justin.bond@ljhooker.com.au

Belinda Bond
0400 544 557
belinda.bond@ljhooker.com.au

AGENCY

LJ Hooker Tumby Umbi | Killarney Vale |
Bateau Bay
(02) 4389 1722

All information contained therein is gathered from relevant third parties sources.
We cannot guarantee or give any warranty about the information provided.
Interested parties must rely solely on their own enquiries.



- Internal laundry.

Outside is nice rear deck, the ideal place to set up for family gatherings and cook a BBQ that over looks rear yard, that offers plenty of space to play.

Garaging is taken care of by a single lock up garage, and there is space that may be suitable for side access if a gate was installed to fit a trailer.

The location:

- 3.1 kms to Killarney Vale Public School.
- 5.9 kms to Tuggerah Lakes Secondary College Tumbi Umbi Campus
- 1.3 kms to Cresthaven Shops.
- 2.6 kms drive to Bateau Bay Square.
- 3.1 km to Bateau Bay Beach, Wyrabalong National Park and walking trails
- Approximately 12 kms to Tuggerah Station, Westfield Tuggerah and M1 Motor way

Be quick to contact Justin or Belinda today!

Disclaimer: All information contained herein is gathered from sources we consider to be reliable, however we cannot guarantee or give any warranty about the information provided. All images, border/s, property boundaries and floor plans are indicative of the property and for illustrative purposes only. Any development potential stated herein is suggestive only and may be subject to relevant approvals, as such it is not to be relied upon. All distances and measurements are approximate. Interested parties must solely rely on their own enquiries.

MORE DETAILS

Property ID	WSZGJF
Property Type	House
Land Area	525 m2

Justin Bond 0406 999 007

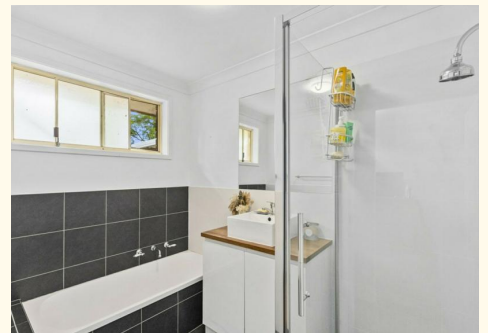
Principal - Licensee | justin.bond@ljhooker.com.au

Belinda Bond 0400 544 557

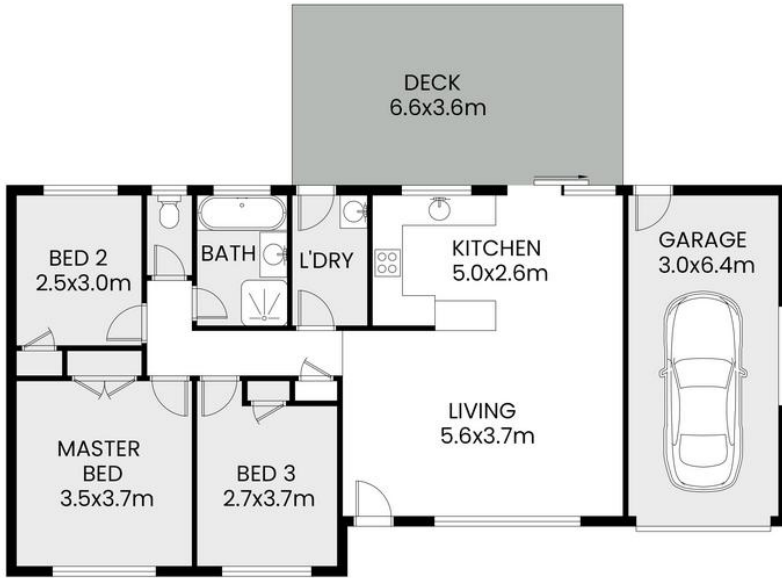
Principal - Licensee | belinda.bond@ljhooker.com.au

LJ Hooker Tumbi Umbi | Killarney Vale | Bateau Bay (02) 4389 1722

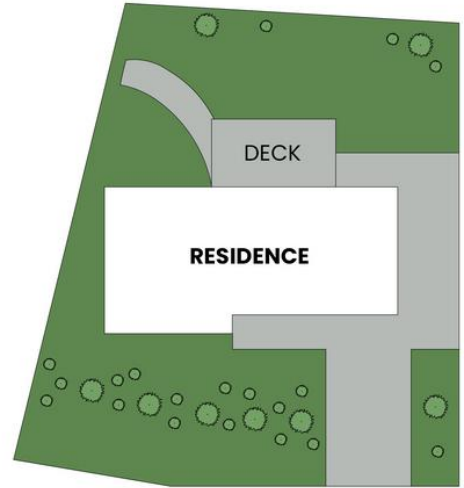
Shop 2, 140 Wyong Road, KILLARNEY VALE NSW 2261
tumbiumbi.ljhooker.com.au | tumbiumbi@ljhooker.com.au



18 Debra Anne Drive Bateau Bay



FLOOR PLAN



SITE PLAN

Scale in meter. Indicative only. Measurement and dimensions are approximate.
All information contained herein is gathered from source we believe to be reliable.
However we cannot guarantee its accuracy and interested persons should rely on their own enquiries.



APPROX. INT: 105m²



All information contained therein is gathered from relevant third parties sources.
We cannot guarantee or give any warranty about the information provided.
Interested parties must rely solely on their own enquiries.

