

Bateau Bay, 30a Poplars Avenue

Privately Set in a Quality Street!

Privately Set in a quality East Bateau Bay Street, is this charming coastal home offering ultimate privacy.

Free standing and ready for you to occupy now.

Well presented on a low maintenance 330.8 sq/m block, is this ideal Bateau Bay home within close proximity to local facilities.

Featuring:

- * Generous main bedroom, with built in robe adjoining bathroom.
- * Three more bedrooms, with built in robes to all.
- * Generous main living area.
- * Second living / dining area.



Disclaimer: All information contained therein is gathered from relevant third parties sources. We cannot guarantee or give any warranty about the information provided. Interested parties must rely solely on their own enquiries.

SOLD

4

1

1

For Sale
\$820,000 - \$870,000

View
ljhooker.com.au/WHRGJF

Contact
Justin Bond
0406 999 007
justin.bond@ljhooker.com.au
Belinda Bond
0400 544 557
belinda.bond@ljhooker.com.au

**LJ Hooker Tumbi Umbi | Killarney
Vale | Bateau Bay
(02) 4389 1722**

- * Kitchen capturing a leafy outlook to the rear yard and decking area.
- * Internal laundry.

Outdoors a rear yard with plenty of space for a dog or family pet, and has a decking area to entertain.

Garaging is taken care of by a double internally with oversized single entry, allowing for one car plus plenty of additional storage space with remote entry and internal access.

This home is the ideal low maintenance set up that is Torrens title, meaning no strata fees and is freestanding.

The Location:

- * 3.4 kms to Wamberal Public School.
- * 2.1 kms to Tuggerah Lakes Secondary College Tumby Umbi Campus
- * 3.5 kms drive to Bateau Bay Square.
- * 2.8 km walk to Bateau Bay Beach, Wyrabalong National Park and walking trails
- * 7.5 kms to Terrigal Esplanade, Restaurants, Cafes and Beach.
- * Approximately 16 kms to Gosford Station.

Do not miss your chance to secure this beachside gem.

Call Justin or Belinda to arrange your inspection today!

Disclaimer: All information contained herein is gathered from sources we consider to be reliable, however we cannot guarantee or give any warranty about the information provided. All images, border/s, property boundaries and floor plans are indicative of the property and for illustrative purposes only. Any development potential stated herein is suggestive only and may be subject to relevant approvals, as such it is not to be relied upon. All distances and measurements are approximate. Interested parties must solely rely on their own enquiries.

More About this Property

Property ID	WHRGJF
Property Type	DuplexSemi-detached
Land Area	330.8 m2

Justin Bond 0406 999 007

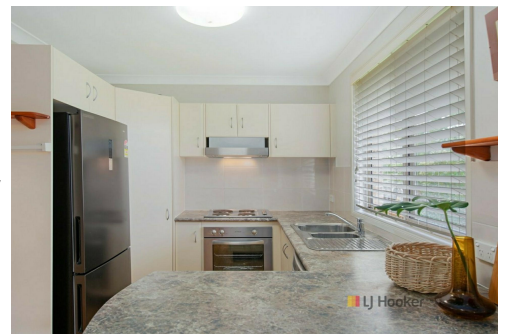
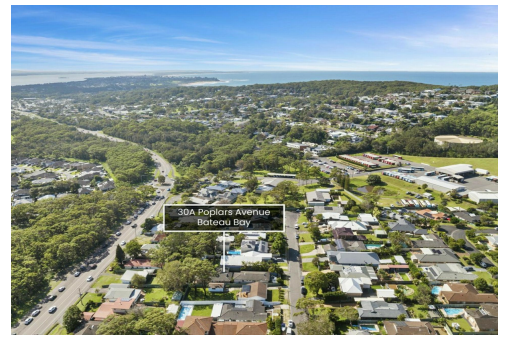
Principal - Licensee | justin.bond@ljhooker.com.au

Belinda Bond 0400 544 557

Principal - Licensee | belinda.bond@ljhooker.com.au

LJ Hooker Tumby Umbi | Killarney Vale | Bateau Bay (02) 4389 1722

Shop 2, 140 Wyong Road, KILLARNEY VALE NSW 2261
 tumbyumbi.ljhooker.com.au | tumbyumbi@ljhooker.com.au



Disclaimer: All information contained therein is gathered from relevant third parties sources. We cannot guarantee or give any warranty about the information provided. Interested parties must rely solely on their own enquiries.

LJ Hooker Tumby Umbi | Killarney Vale | Bateau Bay (02) 4389 1722