

## Baringa, 6 Locke Crescent

### Family Living at its Finest

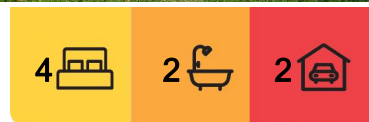
Welcome to this spacious and beautifully presented family home nestled in the heart of Baringa, one of Aura's most sought-after neighbourhoods. Set on a generous 455m<sup>2</sup> block, this property offers a perfect blend of comfort and functionality with four well-sized bedrooms, two bathrooms, and a double garage. With two separate living areas (see photo 3 for media room), there's ample space for the whole family to relax, entertain or unwind in peace. The large rear yard is ideal for kids, pets or even your future pool.

Positioned just 50 metres from the beloved Pedal Park, this home is a haven for families who love to enjoy the outdoors. The convenience of living here is unmatched, with an easy walk to everything you need - supermarkets, cafes, doctors, dentists, restaurants, and a wide range of services all just minutes away. Whether you're grabbing a coffee, picking up groceries or heading out for dinner, it's all at your doorstep.

Enjoy the convenience of being just a short drive from the Bruce Highway, making



**Disclaimer:** All information contained therein is gathered from relevant third parties sources. We cannot guarantee or give any warranty about the information provided. Interested parties must rely solely on their own enquiries.



**For Sale**  
\$950,000

**View**  
By Appointment

**Contact**  
**Paul O'Brien**  
0427859399  
paul.obrien@ljhooker.com.au

**Brooke Stephenson**  
0462 060 117  
brooke.stephenson@ljhooker.com.au

**LJ Hooker Beerwah**  
**(07) 5318 7277**

commuting a breeze, while also being within easy reach of the Sunshine Coast University Hospital and the stunning beaches of Caloundra - perfect for weekends spent soaking up the sun or exploring the coastal lifestyle.

Families will also appreciate being in close proximity to Baringa's excellent educational facilities, including preschool, primary, and secondary school options - all within walking or cycling distance. This home offers an unbeatable lifestyle in a vibrant, growing community, perfect for those seeking space, convenience and a strong sense of neighbourhood. Whether you're upsizing, investing, or securing your forever home, this one ticks every box.

#### Key Features:

- 4 bedroom, 2 bathroom, 2 living
- Open plan kitchen/dining/living
- Separate media room
- Walk in wardrobe and ensuite off master bedroom
- Split system air-conditioning in both living areas and master bedroom
- Large alfresco area and fully fenced rear yard
- Entertainers kitchen with stone bench tops, stainless steel range and dishwasher
- 2 car garage with separate laundry room
- Close to Caloundra beaches
- Short drive to Bruce highway and Sunshine Coast University Hospital
- Short walk to all Baringa has to offer

Don't miss out on this incredible opportunity that Baringa has to offer. Contact us today to make this home yours.

Paul O'Brien - 0427 859 399

Brooke Stephenson - 0462 060 117

## More About this Property

<b>Property ID</b>	TXJ0D
<b>Property Type</b>	House
<b>Land Area</b>	455 m2
<b>Including</b>	Ensuite Air Conditioning Toilets (2) Dishwasher Built-in-Robes Fully Fenced Remote Garage Water Tank

#### Paul O'Brien 0427859399

Director | paul.obrien@ljhooker.com.au

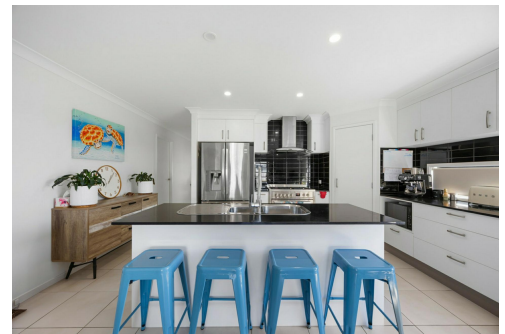
#### Brooke Stephenson 0462 060 117

Sales Consultant | brooke.stephenson@ljhooker.com.au

#### LJ Hooker Beerwah (07) 5318 7277

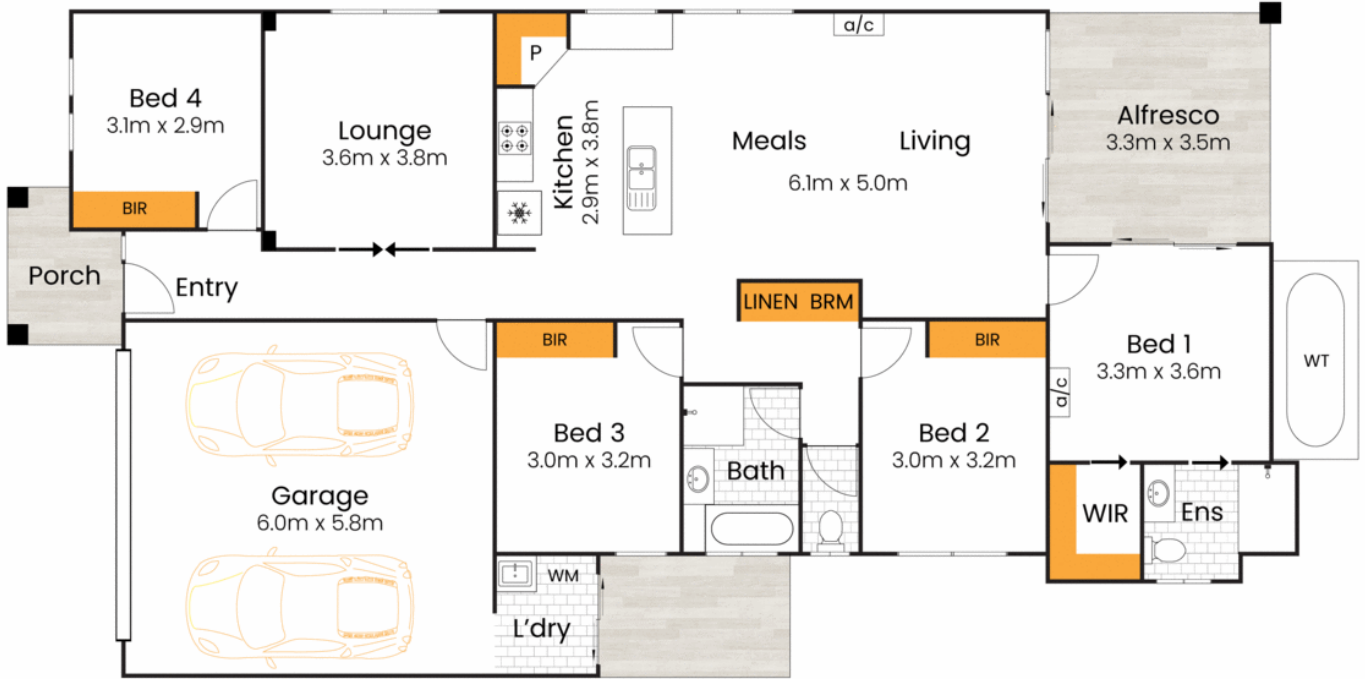
4/22 Peachester Road, BEERWAH QLD 4519

Beerwah.ljhooker.com.au | beerwah@ljhooker.com.au



**LJ Hooker Beerwah**  
**(07) 5318 7277**

**Disclaimer:** All information contained therein is gathered from relevant third parties sources. We cannot guarantee or give any warranty about the information provided. Interested parties must rely solely on their own enquiries.



Approx House Area 203m<sup>2</sup>

Whilst every attempt has been made to ensure the accuracy of the floor plan contained here, the measurements of doors, windows, room and any other items and structures are approximate, and no responsibility is taken for any error, omissions or misstatement. Bathroom and kitchen fittings, door types, cupboards and appliances are illustrated as tokens and approximate to the actual fitting installed. This plan is for illustrative purposes and should be used as such by any prospective buyer

**6 Locke Crescent, Baringa**



**LJ Hooker Beerwah**  
(07) 5318 7277

**Disclaimer:** All information contained therein is gathered from relevant third parties sources. We cannot guarantee or give any warranty about the information provided. Interested parties must rely solely on their own enquiries.