



**SOLD**



## Baringa, 5 Berry Terrace

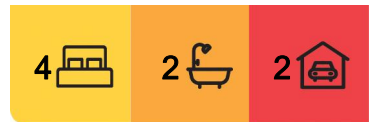
Stunning Ex-Display Home in Prime Location!

Welcome to 5 Berry Terrace, this stunning ex-display home built in 2017 by Brighton Homes combines modern luxury with smart spacious design, offering low-maintenance living and seamless indoor-outdoor flow.

Perfect for families or investors, the home features a bright, open-plan layout with 2.7m high ceilings, gourmet kitchen with Smeg appliances and a large butler's pantry. The home also offers three living areas, four spacious bedrooms (including a master suite with walk-in robe and en-suite), stylish bathrooms, ducted air-conditioning, and an oversized double garage.

Some great work from home features includes NBN (FTTP with battery backup), internal ethernet wiring, 100V speaker system, CCTV and home alarm system.

Finally, the home is in a wonderful location, just a short stroll to Baringa State Primary and



**For Sale**  
Please Call

**View**  
[ljhooker.com.au/EMJ0D](http://ljhooker.com.au/EMJ0D)

**Contact**  
**Chris Meldrum**  
0429 695 476  
[chris.meldrum@ljhooker.com.au](mailto:chris.meldrum@ljhooker.com.au)



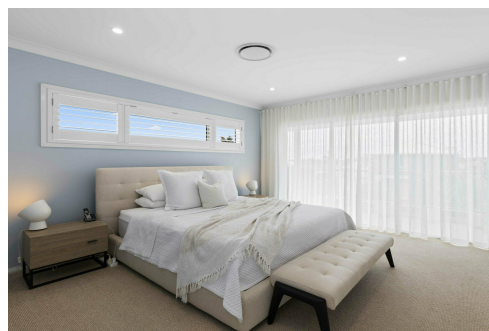
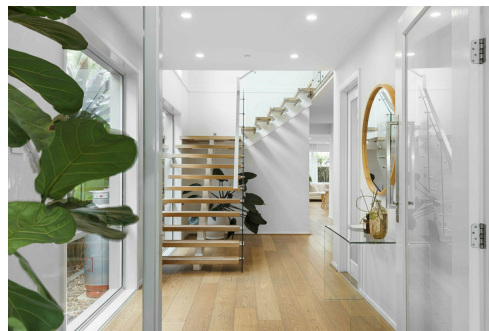
**LJ Hooker Beerwah**  
**(07) 5318 7277**

**Disclaimer:** All information contained therein is gathered from relevant third parties sources. We cannot guarantee or give any warranty about the information provided. Interested parties must rely solely on their own enquiries.

High, local shops and multiple parks, and only a short drive to Caloundra and its world class beaches.

Features you will love:

- . Bright, open-plan layout filled with natural light
- . Gourmet kitchen with stone benchtops, gas cooktop, and premium Smeg appliances
- . Full butler's pantry for extra storage and functionality
- . Three spacious living areas giving plenty of options
- . Four bedrooms with built in robes, including a master with walk-in robe and en-suite
- . Stylish bathrooms with separate bathtubs and showers
- . High 2.7m ceilings downstairs for a spacious feel
- . Plantation shutters and ducted air-conditioning throughout
- . Seamless indoor-outdoor flow to an entertaining deck
- . Oversized double garage with heavy-duty shelving
- . NBN, CCTV, Speaker system & Alarm
- . Prime location: 3-minute walk to local schools, shops and parks
- . Only a short drive into Caloundra or the University Hospital



## More About this Property

<b>Property ID</b>	EMJ0D
<b>Property Type</b>	House
<b>Land Area</b>	280 m <sup>2</sup>
<b>Including</b>	Air Conditioning Ducted Cooling Ducted Heating Alarm Balcony Deck Dishwasher Built-in-Robes Secure Parking Fully Fenced Water Tank

**Chris Meldrum 0429 695 476**

Sales Consultant | [chris.meldrum@ljhooker.com.au](mailto:chris.meldrum@ljhooker.com.au)

**LJ Hooker Beerwah (07) 5318 7277**

4/22 Peachester Road, BEERWAH QLD 4519

[Beerwah.ljhooker.com.au](http://Beerwah.ljhooker.com.au) | [beerwah@ljhooker.com.au](mailto:beerwah@ljhooker.com.au)



**LJ Hooker Beerwah  
(07) 5318 7277**

**Disclaimer:** All information contained therein is gathered from relevant third parties sources. We cannot guarantee or give any warranty about the information provided. Interested parties must rely solely on their own enquiries.



**GROUND FLOOR**

**FIRST FLOOR**

**5 Berry Terrace, Baringa**

Artist Impression ONLY. Every attempt to has been made too ensure the accuracy of this floor plan. All measurements are approximate and we take no responsibility for any error or mis-statement. This plan should only be used for real estate purposes for a prospective buyer. FLOOR PLAN BY ELITE MEDIA GROUP | elitemediasunshinecoast.com.au