

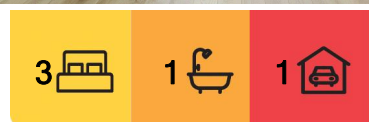
Bargo, 4/233 Great Southern Road

Ideal Property For The First Home Buyer or Investor!

Positioned ideally close to the town centre, train station and school. As an investment property these benefits are ideal with quick access to the freeway. Bargo is a thriving township located near the historic township of Picton and north of Bowral.

Features include

- Neat 3 bedroom Villa living
- Kitchen has been renovated and bathroom in great condition
- Undercover outdoor area off kitchen
- Open plan dining area off kitchen
- Neutral decor
- Split system air conditioning
- Private back yard area
- Single lockup garage



For Sale
\$665,000

View
ljhooker.com.au/48AHV8

Contact
Melika McEachern
0476 394 323
melika.mceachern@ljhooker.com.au
Malcolm McEachern
0401 997 700
mal.mceachern@ljhooker.com.au



Disclaimer: All information contained therein is gathered from relevant third parties sources. We cannot guarantee or give any warranty about the information provided. Interested parties must rely solely on their own enquiries.

LJ Hooker Picton
(02) 4677 3441

The close proximity to schools, train station, shops and freeway make this the ideal investment or first home buyer property. Given the nature of the property being strata all information supplied is done so to the best of our knowledge, always check with the appropriate authorities prior to making offers.

More About this Property

Property ID	48AHV8
Property Type	House

Melika McEachern 0476 394 323

Sales/Director | melika.mceachern@ljhooker.com.au

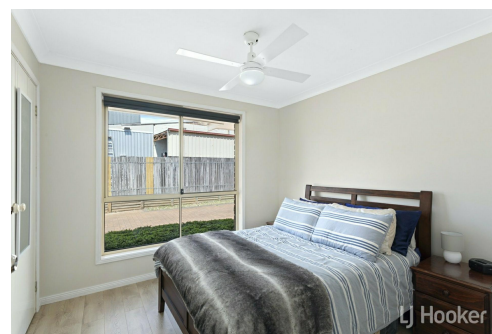
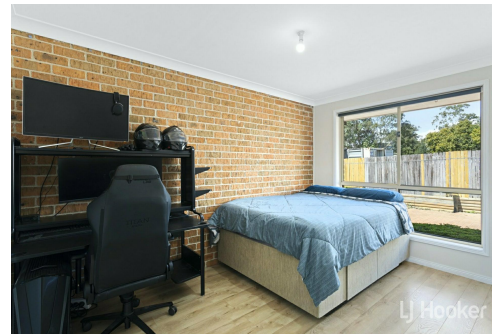
Malcolm McEachern 0401 997 700

Licensee | mal.mceachern@ljhooker.com.au

LJ Hooker Picton (02) 4677 3441

Suite 20, 150-158 Argyle Street, PICTON NSW 2571

picton.ljhooker.com.au | picton@ljhooker.com.au



Disclaimer: All information contained therein is gathered from relevant third parties sources. We cannot guarantee or give any warranty about the information provided. Interested parties must rely solely on their own enquiries.

**LJ Hooker Picton
(02) 4677 3441**