

Bardwell Park, 1/110-112 Slade Road

Private Corner 4 Bedroom Townhouse

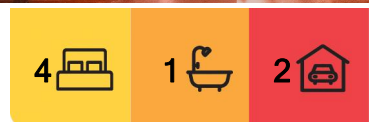
Discover modern living in this spacious and sun-drenched 4-bedroom plus study/office townhouse, sets on 229sqm and ideally situated in a boutique block of just six. Enjoy the privacy of a corner position, boasting abundant natural light with desirable north-south facing aspects.

Key Features:

- * 4 good size bedrooms, including a main with built-in wardrobes, plus a dedicated study/office, perfect for working from home or as an extra living space.
- * Modern fully tiled bathroom.
- * Modern induction kitchen, complete with stone benchtops and a dishwasher
- * Consist of timber flooring throughout
- * Enjoy year-round comfort with ducted air conditioning throughout.
- * Internal laundry includes an additional toilet for added convenience.



Disclaimer: All information contained therein is gathered from relevant third parties sources. We cannot guarantee or give any warranty about the information provided. Interested parties must rely solely on their own enquiries.



For Sale
\$1,360,000

View
ljhooker.com.au/2FY4F9E

Contact
Soon Tee
0420 966 377
Soon.Tee@ljhooker.com.au
Joe Guida
joe.guida@ljhooker.com.au

**LJ Hooker Parramatta | Granville |
Guildford | Merrylands
(02) 9637 8555**

- * Double lock-up garage and two dedicated visitor spaces, parking will never be an issue.
- * Private outdoor undercover courtyard provides the perfect setting for entertaining, al fresco dining, and bbq.
- * Solid construction built with a concrete slab and featuring only one common wall, ensuring durability and peace.

Location Highlights:

- * 400meters to Bardwell Park Train station
- * Enjoy the proximity to parklands, local shopping, public schools
- * Just a short 12-minute drive to Brighton-Le-Sands Beach, offering a fantastic coastal lifestyle.
- * 30min drive to Sydney CBD
- * 10min drive to Sydney airport

Outgoings (Approximate Quarterly):

- * Strata: \$1030 pq
- * Council: \$421 pq
- * Water: \$180 pq

This property offers an outstanding opportunity for families or those seeking a low-maintenance, high-quality lifestyle in a sought-after Bardwell Park location.

Contact the team for more information or inspect the property.

More About this Property

Property ID	2FY4F9E
Property Type	Townhouse
Land Area	229 m2

Soon Tee 0420 966 377

Area Specialist | Soon.Tee@ljhooker.com.au

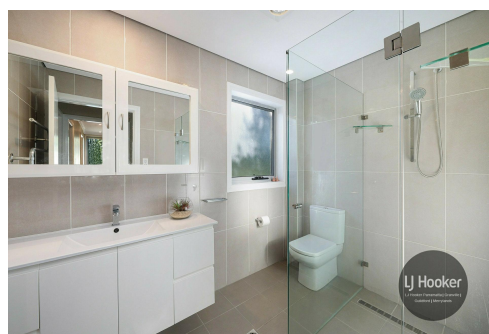
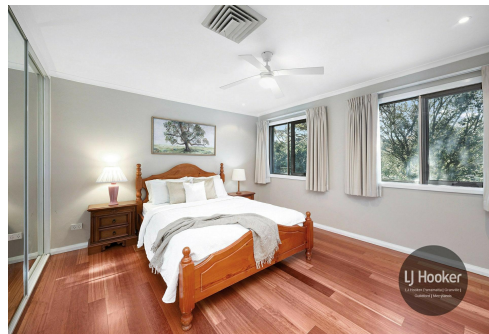
Joe Guida

Sales Associate | joe.guida@ljhooker.com.au

LJ Hooker Parramatta | Granville | Guildford | Merrylands (02) 9637 8555

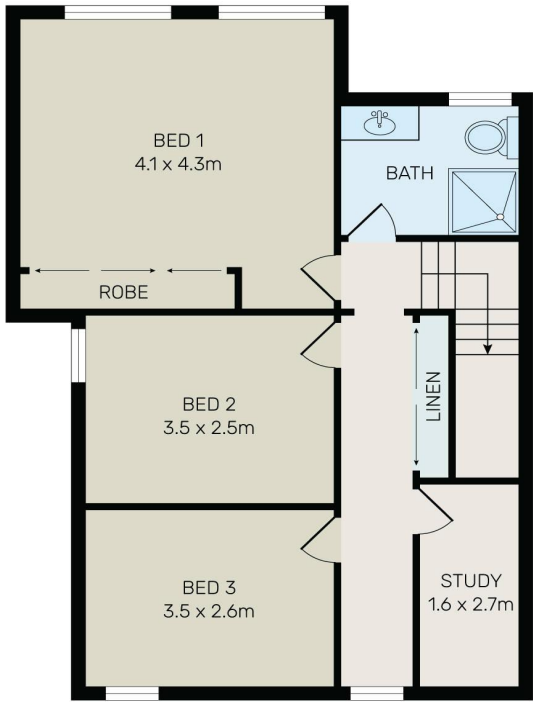
42 South Street, GRANVILLE NSW 2142

granville.ljhooker.com.au | granville@ljhooker.com.au

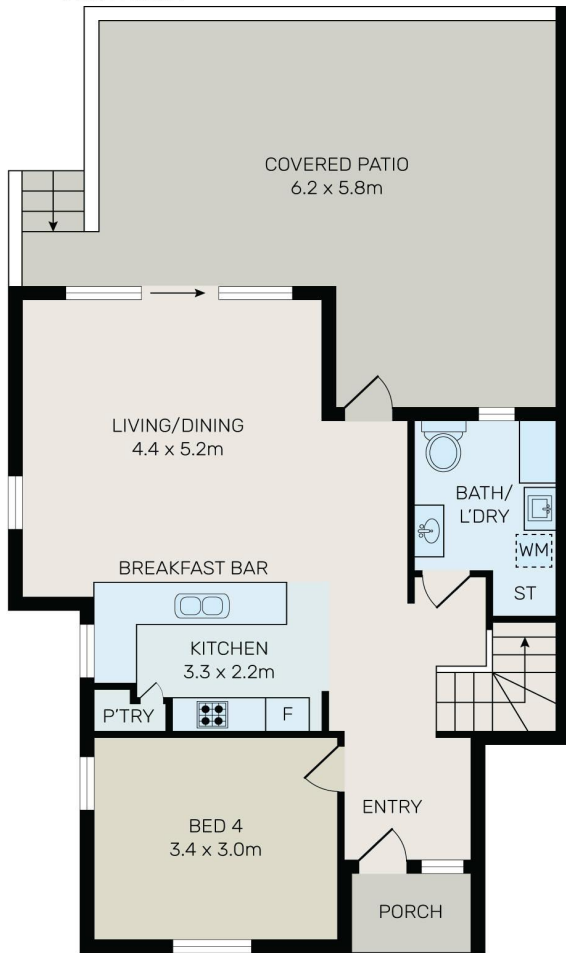
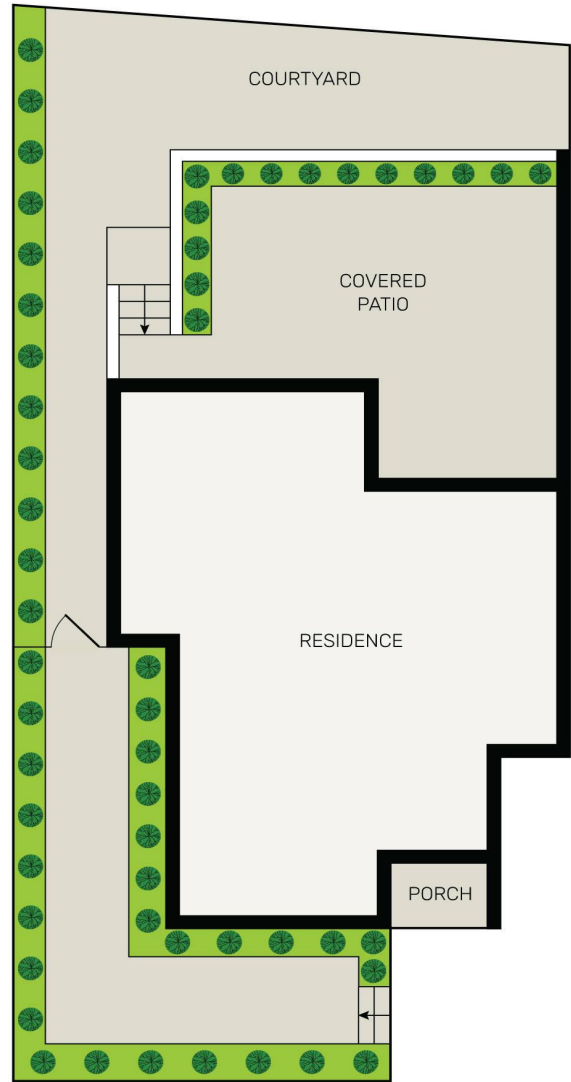


Disclaimer: All information contained therein is gathered from relevant third parties sources. We cannot guarantee or give any warranty about the information provided. Interested parties must rely solely on their own enquiries.

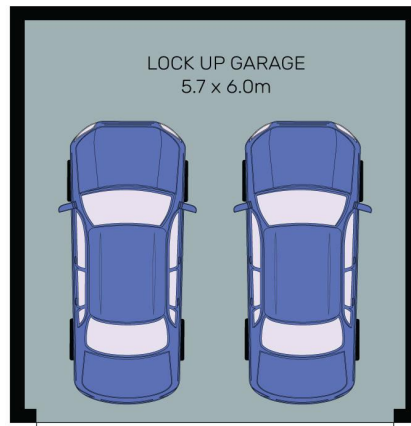
LJ Hooker Parramatta | Granville | Guildford | Merrylands (02) 9637 8555



FIRST FLOOR



GROUND FLOOR



All information contained herein is gathered from all sources we believe to be reliable. However we cannot guarantee its accuracy and interested parties should rely on their own enquiries.



1/110-112 Slade Road, Bardwell Park



LJ Hooker Parramatta | Granville |
 Guildford | Merrylands
 (02) 9637 8555

Disclaimer: All information contained therein is gathered from relevant third parties sources.
 We cannot guarantee or give any warranty about the information provided. Interested parties must rely solely on their own enquiries.