



## Banya, 160 Tyndall Circuit

BRAND NEW HOME AWAITING ITS FIRST OWNER

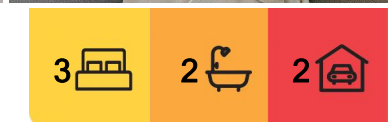
Paul O'Brien and Xavier Martin of LJ Hooker is proud to present 160 Tyndall Circuit, Banya. This brand new, beautifully designed terrace home boasts 3-bedrooms, 2-bathrooms, an extra large double car garage and a bonus side yard rarely seen with terrace homes.

This low-maintenance property is perfect for families, investors, or anyone seeking a modern lifestyle in a vibrant community. Step inside and discover a spacious layout that boasts three generously sized bedrooms, including a master with an ensuite, plus an additional well-appointed family bathroom with separate shower and bath.

The open-plan living area seamlessly integrates indoor and outdoor spaces, creating a welcoming atmosphere for both daily living and entertaining. The modern kitchen features a stone bench top, electric appliances including dishwasher, ample counter space, and modern storage solutions making it a chefs dream. The bathrooms are elegantly designed



**Disclaimer:** All information contained therein is gathered from relevant third parties sources. We cannot guarantee or give any warranty about the information provided. Interested parties must rely solely on their own enquiries.



**For Sale**  
Offers Over \$789,000

**View**  
[ljhooker.com.au/T2J0D](https://ljhooker.com.au/T2J0D)

**Contact**  
**Paul O'Brien**  
0427859399  
[paul.obrien@ljhooker.com.au](mailto:paul.obrien@ljhooker.com.au)  
**Xavier Martin**  
0435 947 427  
[xavier.martin@ljhooker.com.au](mailto:xavier.martin@ljhooker.com.au)

**LJ Hooker Beerwah**  
**(07) 5318 7277**

with quality fixtures, offering comfort and convenience.

Located in the newest section of Banyu, this property is close to future schools, sporting grounds, cafes, medical facilities, and public transport, making it ideal for both homeowners and long-term investors. The Aura estate features parks, walking tracks, and a community atmosphere that blends comfort with convenience. Plus, you're only a short 15-minute drive from the Bruce Highway, Caloundra CBD, and the beautiful local beaches.

**Key Features:**

- 3-bedroom, 2-bathroom home in the desirable suburb of Banyu
- Main bedroom with ensuite and air conditioning
- Open-plan kitchen, living and dining area that connects seamlessly to the outdoors
- Well-equipped kitchen with electric appliances, dishwasher and ample storage
- Generous fully fenced side yard
- Within 15-minute drive to Caloundra CBD, beaches, and the Bruce Highway

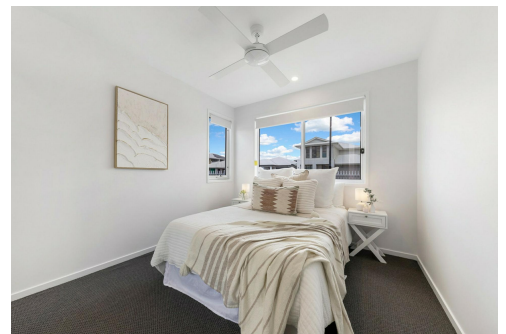
Experience modern living in a prime location at 160 Tyndall Circuit where style meets practicality.

## More About this Property

<b>Property ID</b>	T2J0D
<b>Property Type</b>	House
<b>Land Area</b>	258 m2
<b>Including</b>	Ensuite Air Conditioning Toilets (2) Dishwasher Built-in-Robes Secure Parking Fully Fenced Remote Garage Water Tank Liveability

**Paul O'Brien 0427859399**  
Director | paul.obrien@ljhooker.com.au  
**Xavier Martin 0435 947 427**  
Sales Consultant | xavier.martin@ljhooker.com.au

**LJ Hooker Beerwah (07) 5318 7277**  
4/22 Peachester Road, BEERWAH QLD 4519  
Beerwah.ljhooker.com.au | beerwah@ljhooker.com.au



**LJ Hooker Beerwah**  
**(07) 5318 7277**

**Disclaimer:** All information contained therein is gathered from relevant third parties sources. We cannot guarantee or give any warranty about the information provided. Interested parties must rely solely on their own enquiries.

160 Tyndall Crescent, Banyu



This floor/site plan is conceptual only, it is provided for illustrative purposes and should not be relied upon. We make no guarantee as to the accuracy of this plan, all interested parties should make and rely on their own enquiries in determining the accuracy and information contained on this floor/site plan.



LJ Hooker Beerwah  
(07) 5318 7277

**Disclaimer:** All information contained therein is gathered from relevant third parties sources. We cannot guarantee or give any warranty about the information provided. Interested parties must rely solely on their own enquiries.