



2/8 Seafarer Place, Banora Point

SOLD BY JO LYNCH

Presenting a rare waterfront duplex, nestled in the exclusive pocket of Oxley Cove, Banora Point.

Seafarer Place is a quiet cul-de-sac by the water's edge of Chinderah Bay where locals enjoy the Tweed River lifestyle by getting out on paddle boards, kayaks, and enjoying flat walks along the waterfront.

This single level 2-bedroom, 2-bathroom duplex sits at the rear of the property enjoying an East-facing aspect and water views. If you have dreamt of waking to sunrise over the Tweed River, this is the one.

This property already exudes character with its stunning raked ceilings and exposed timber beams. A cosy fireplace sits in the corner by the door to your alfresco entertaining area. Step outside to where you will spend your Summer days fishing from the backyard and entertaining by the water's edge.

This is an absolute gem for those seeking a peaceful, low-maintenance waterfront lifestyle.

The details:

- Single level duplex - no stairs
- Stunning raked ceilings with exposed timber beams.

2 🏠 2 🚿 1 🚗

FOR SALE

\$1,015,000 - \$1,045,000

AGENTS

Jo Lynch

0424 420 884

jolynch@ljhookersgc.com.au

AGENCY

LJ Hooker Coolangatta | Tweed

(07) 5536 5577

All information contained therein is gathered from relevant third parties sources.
We cannot guarantee or give any warranty about the information provided.
Interested parties must rely solely on their own enquiries.

 **LJ Hooker**

- Kitchen with electric oven, cooktop and rangehood, breakfast bar
- Master bedroom with Tweed River views, ceiling fan, walk through robe and ensuite
- Bedroom 2 with ceiling fan
- Main bathroom with bathtub and separate toilet
- Split system air-conditioning
- Cosy fireplace
- Single garage, converted into multipurpose area. Additional off-street parking bay
- Laundry in garage with external access to rear courtyard
- Covered alfresco entertaining area with water views
- Solar electricity

Rental appraisal - \$850-\$900 per week
 Shared building insurance - approx. \$1832 per annum per unit
 Shared water bill - approx. \$100 per quarter per unit
 Council rates - approx. \$2880 per annum
 No body corporate fees.

Convenient to:

- Tweed City Shopping Centre - 4km
- Coolangatta Beach - 9km
- Kingscliff - 9km
- Gold Coast International Airport - 10km
- Tweed Valley Hospital - 10km
- John Flynn Private Hospital - 13km

To arrange your inspection, please contact Jo Lynch on 0424 420 884.

Disclaimer:

All information (including but not limited to the property area, floor size, price, address and general property description) is provided as a convenience to you, and has been provided to LJ Hooker by third parties. LJ Hooker is unable to definitively confirm whether the information listed is correct or 100% accurate. LJ Hooker does not accept any liability (direct or indirect) for any injury, loss, claim, damage or any incidental or consequential damages, including but not limited to lost profits or savings, arising out of or in any way connected with the use of any information, or any error, omission or defect in the information, contained on the Website. Information contained on the Website should not be relied upon and you should make your own enquiries and seek legal advice in respect of any property on the Website. Prices displayed on the Website are current at the time of issue, but may change.

MORE DETAILS

Property ID KV3HEZ
 Property Type DuplexSemi-detached

Jo Lynch 0424 420 884

Sales & Marketing Specialist | jolynch@ljhookersgc.com.au

LJ Hooker Coolangatta | Tweed (07) 5536 5577

5/100 Griffith Street, COOLANGATTA QLD 4225

coolangattatweed.ljhooker.com.au | enquiries@ljhookerct.com.au

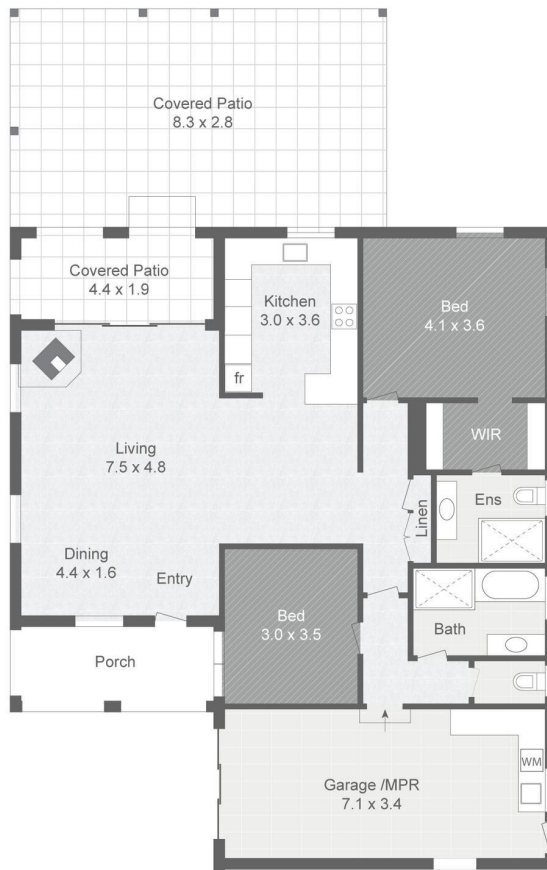


**2/8 Seafarer Place
Banora Point**

BED 2
BATH 2
CAR 1

INTERNAL 114sqm
EXTERNAL 68sqm
GARAGE 24sqm

TOTAL 206sqm



Plans shown are for presentation purposes only and are not part of any legal document or title. They are subject to errors, omissions, inaccuracies and should not be used as a sole and accurate reference. Interested parties should make their own inquiries using independent sources.