



3 Shannon Rise, Banksia Park

5 4 2

A Tropical Hideaway of Space, Charm and Breathtaking Outdoors

Welcome to 3 Shannon Rise, Banksia Park. A remarkable three-level residence that seamlessly blends 1967 character with modern comfort and a lifestyle that feels worlds away from suburban living.

From the moment you arrive, the care and attention poured into this home are unmistakable. Boasting an exceptional 271sqm (approx.) of internal living on a generous 870sqm (approx.) allotment, this is a property designed to be lived in, loved and enjoyed.

Ideal for large or growing families seeking both functionality and a retreat-like ambience, the home offers five bedrooms, four bathrooms, multiple living zones and one of the most breathtaking tropical backyards in the north east. Every corner has been thoughtfully maintained and enhanced by the long-term owners, creating a warm, inviting home with a unique personality that truly sets it apart.

Step outside and you'll feel as though you've entered your own private rainforest. Seasonal creek, bridge, timber decking, lush established

FOR SALE
\$1,195,000

AGENTS

Peter Brown
0474 027 256
peterb@ljhsales.com.au

AGENCY

LJ Hooker Property Specialists
(08) 8289 6660

All information contained therein is gathered from relevant third parties sources.
We cannot guarantee or give any warranty about the information provided.
Interested parties must rely solely on their own enquiries.

LJ Hooker

gardens, firepit zone and hidden garden nooks combine to create an unforgettable outdoor experience rarely found in a residential setting. This is a home that must be walked through and explored to fully appreciate its magic.

Key features

- 1967-built family home with timeless character
- Master bedroom with renovated ensuite, built-in robes, split-system air conditioning and stunning views of the tropical backyard
- Bedrooms 2 and 3 include built-in wardrobes
- Upstairs bedrooms 4 and 5 include built-in wardrobes and ceiling fans, plus a retreat area with split-system air conditioning and a renovated bathroom
- Renovated main bathroom
- Formal lounge featuring a slate feature wall, combustion heater and split-system air conditioning
- Evaporative air conditioning throughout the main living areas for year-round comfort
- Louvre windows throughout enhancing airflow and natural light
- Large open-plan timber kitchen with quality Westinghouse pyrolytic oven, dishwasher, induction cooktop and ample cupboard and bench space
- Meals area with seamless indoor/outdoor flow via French doors
- Expansive wraparound timber-deck veranda with multiple outdoor entertaining zones
- Downstairs rumpus/bar room with its own bathroom - perfect for teenagers, games nights or hosting guests
- Dedicated study, ideal for working from home
- Show-stopping tropical backyard featuring a firepit, lawn, seasonal creek bed, rock walls and a hand-built bridge
- Garden/storage shed and rainwater tank
- Parking for five vehicles, including undercover space for two cars plus off-street parking for three more

Set in the heart of Banksia Park, this home offers a rare combination of serenity and convenience. Just moments from Banksia Park Primary School, Banksia Park International High School, St David's Parish School, Tea Tree Gully shops, local cafés and dining and excellent public transport - everything a family needs is right at your fingertips.

For those who love the outdoors, you are minutes from the Tea Tree Gully Golf Club, the walking trails, wildlife, and picnic areas of Anstey Hill Recreation Park, as well as numerous local parks and reserves. Whether entertaining at home, exploring nature or enjoying the vibrant local community, this is a home and location that truly enhance everyday living.

All information provided has been obtained from sources we believe to be accurate, however, we cannot guarantee the information is accurate and we accept no liability for any errors or omissions (including but not limited to a property's land size, floor plans and size, building age and condition). Interested parties should make their own enquiries and obtain their own legal and financial advice. Should this property be scheduled for auction, the Vendor's Statement may be inspected at our LJ Hooker Property Specialists Real Estate office for 3 consecutive business days immediately preceding the auction and at the auction for 30 minutes before it starts.

RLA 208516

MORE DETAILS

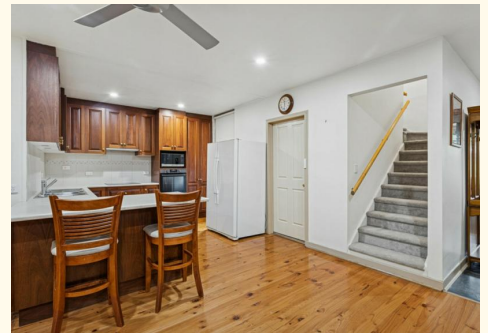
Property ID 2CMGGJU
Property Type House
House Size 271 m2
Land Area 870 m2
Including Study
Air Conditioning
Evaporative Cooling
Fire Place
Balcony
Deck
Dishwasher
Outdoor Entertaining
Floorboards
Built-in-Robes
Water Tank

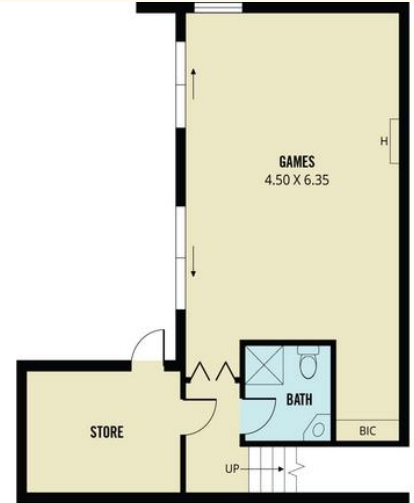
Peter Brown 0474 027 256

Sales Specialist | peterb@ljhsales.com.au

LJ Hooker Property Specialists (08) 8289 6660

Shop 2, 1007 North East Road, RIDGEHAVEN SA 5097
propertyspecialists.ljhooker.com.au | info@ljhsupport.com.au

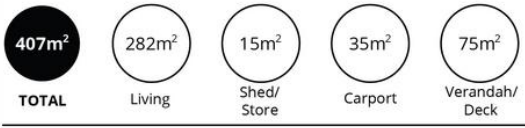




LOWER LEVEL



UPPER LEVEL



Scale in metres. This drawing is for illustration purposes only. All measurements are approximate and details intended to be relied upon should be independently verified.

Produced by The Fotobase Group

All information contained therein is gathered from relevant third parties sources. We cannot guarantee or give any warranty about the information provided. Interested parties must rely solely on their own enquiries.

