

18 Hawaii Crescent, Banksia Beach

## Coastal Comfort in the Heart of Banksia Beach

Discover relaxed island living at 18 Hawaii Crescent, Banksia Beach, a well-appointed home offering the perfect combination of comfort, convenience, and lifestyle. Whether you're a first home buyer, downsizer, retiree, or investor, this property presents an excellent opportunity to secure a home in one of Bribie Island's most desirable suburbs.

Designed for easy living, the home features a functional layout with spacious interiors and a welcoming outdoor area, ideal for enjoying the beautiful Queensland climate.

### Property Features

- 3 spacious bedrooms with built-in wardrobes
- Master bedroom complete with private ensuite
- 2 bathrooms
- 1 secure car space
- Open plan kitchen, and living
- Well-equipped kitchen with ample storage
- Covered outdoor entertaining area
- Low-maintenance yard
- Air conditioning and ceiling fans for year-round comfort

All information contained therein is gathered from relevant third parties sources. We cannot guarantee or give any warranty about the information provided. Interested parties must rely solely on their own enquiries.

3  2  1 

### FOR SALE

Offers over \$929,000

### VIEW

Sat 4th Jul @ 12:00PM - 12:30PM

### AGENTS

Craig Gillard  
0410 553 557  
craig.gillard@ljhooker.com.au

Izabella Shipley  
0437 106 269  
izabella.shipley@ljhooker.com.au

### AGENCY

LJ Hooker Bribie Island  
(07) 3400 1900

 **LJ Hooker**

- Separate laundry
- Ideal lock-up-and-leave lifestyle

### Why Buyers Love Banksia Beach

Banksia Beach is one of Bribie Island's most sought-after coastal communities, known for its peaceful atmosphere, beautiful waterways, and relaxed lifestyle. Residents enjoy easy access to the Pumicestone Passage, boat ramps, parks, walking and cycling tracks, Bribie Island Golf Club, local shopping centres, cafes, schools, and medical facilities. Offering the perfect blend of natural beauty and everyday convenience, Banksia Beach continues to attract both homeowners and investors looking for a quality coastal location.

### A Smart Coastal Opportunity

With its practical design, low-maintenance appeal, and prime Banksia Beach location, 18 Hawaii Crescent is a fantastic opportunity to enjoy the Bribie Island lifestyle or add a quality property to your investment portfolio.

#### Contact:

Craig Gillard- 0410 553 557

Izabella Shipley-0437 106 269

### MORE DETAILS

|               |        |
|---------------|--------|
| Property ID   | XGTHCP |
| Property Type | House  |
| Land Area     | 644 m2 |

#### **Craig Gillard 0410 553 557**

Principal/Licensee | [craig.gillard@ljhooker.com.au](mailto:craig.gillard@ljhooker.com.au)

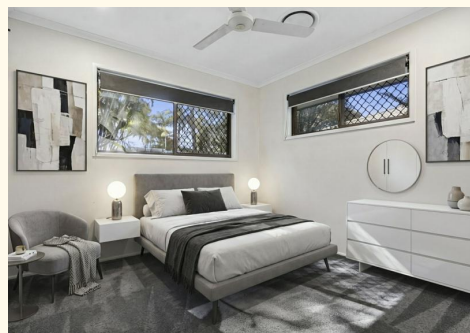
**Izabella Shipley 0437 106 269**

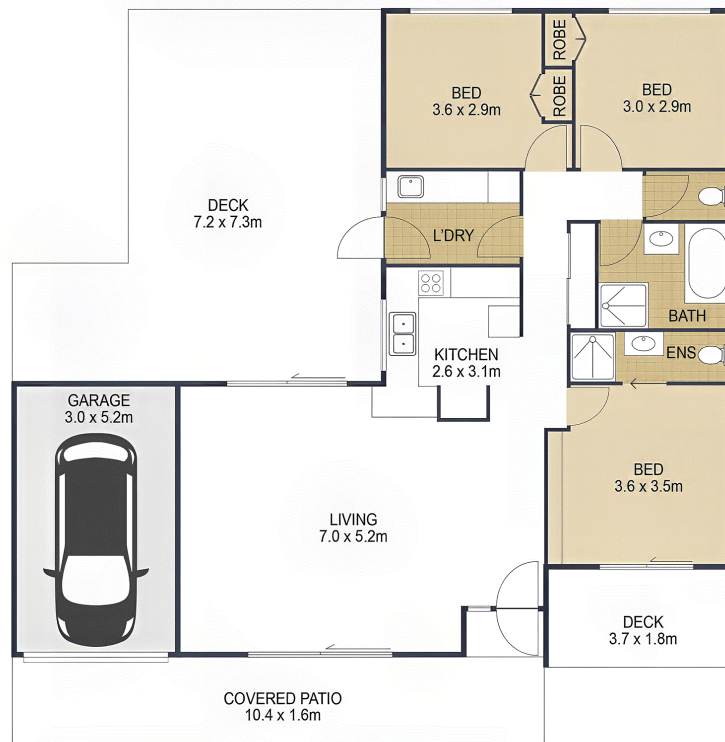
Administration | [izabella.shipley@ljhooker.com.au](mailto:izabella.shipley@ljhooker.com.au)

#### **LJ Hooker Bribie Island (07) 3400 1900**

16/19 Benabrow Avenue, BELLARA QLD 4507

[bribieisland.ljhooker.com.au](http://bribieisland.ljhooker.com.au) | [sales.bribieisland@ljhooker.com.au](mailto:sales.bribieisland@ljhooker.com.au)





TOTAL: 191 m<sup>2</sup>

## 18 Hawaii Crescent **BANKSIA BEACH**

ARTIST'S IMPRESSION ONLY: While every attempt has been made to ensure the accuracy of this floor plan's areas and measurements of doors, windows, rooms and all other items are approximate and no responsibility is taken for any error, omission, or mis-statement. This plan is for illustrative purposes only and should only be used as such by any prospective purchaser. Floor plan by: [www.open2view.com.au](http://www.open2view.com.au)