

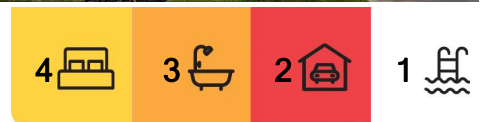
Banksia Beach, 156 Cosmos Avenue

Elegance meets luxury

Perched overlooking the glittering waters of Dux Creek, this waterfront Bribie Island-based home perfectly captures elegant island living. The sprawling one-level residence was constructed by quality builder Mancorp with interiors by leading Queensland designer, Brett Rundle.

With a specialty in coastal interiors, Brett was inspired by the timeless look of the Hamptons when it came to designing this Banksia Beach home. Classic Hamptons details like wainscoting as well as the subtle use of teal accents and an open-plan-style living space have been incorporated alongside coastal finishes to create the perfect home for the Bribie Island locale.

In addition to four spacious bedrooms, you'll also find a sensational outdoor area that's decked with new appliances, a private pontoon and fire pit. Thanks to the home's A-frame-style roof, 156 Cosmos Avenue taps into Bribie Island's year-round sunlight, boasting high



Auction

Sat 17th May @ 11:00AM

View

By Appointment

Contact

Craig Gillard

0410 553 557

craig.gillard@ljhooker.com.au

Petra Gillard

0424 744 984

petra.gillard@ljhooker.com.au



LJ Hooker Bribie Island
(07) 3400 1900

Disclaimer: All information contained therein is gathered from relevant third parties sources. We cannot guarantee or give any warranty about the information provided. Interested parties must rely solely on their own enquiries.

ceilings with multiple skylights and floor-to-ceiling windows.

You're invited to make yourself at home and imagine yourself living in the beachside beauty. Trace from bedroom to bedroom, explore the dreamy bespoke kitchen, take in the unbeatable view and start planning your next dinner party in the outdoor entertaining space.

Property Features:

4 Oversize Bedrooms

3 Luxury Bathrooms

Formal and Casual Living Spaces

Reading/Media Room

Chef's Kitchen complete with Butler's Pantry.

Fully integrated high-end appliances in the kitchen

High ceilings in the bedrooms and elevated ceilings to the living areas

Outdoor Kitchen and BBQ facilities

Large living and relaxation spaces on the patio overlooking the canal

Large Bi-Fold doors to facilitate the breezes

Security and Camera System installed

Solar panels for ECO living

Salt-water swimming pool

Fire pit area to enjoy a winter's night

Private Pontoon for your fishing enjoyment

Deep water access to the Pumicestone Passage

Land Size 719sq meters with a 17.8 meter canal frontage

156 Cosmos Ave, Banksia Beach going to Auction on Saturday 17th May 2025 unless sold prior. Register to bid/watch online: <https://buy.realtair.com/properties/165476>

The team at LJ Hooker Bribie Island look forward to meeting you at our next open home.



LJ Hooker Bribie Island
(07) 3400 1900

Disclaimer: All information contained therein is gathered from relevant third parties sources. We cannot guarantee or give any warranty about the information provided. Interested parties must rely solely on their own enquiries.

More About this Property

Property ID	WT5HCP
Property Type	House
House Size	350 m ²
Land Area	719 m ²
Including	Ensuite Air Conditioning Ducted Cooling Ducted Heating Alarm Pool Dishwasher Outdoor Entertaining Built-in-Robes Secure Parking Fully Fenced Remote Garage Solar Panels Boat Pontoon

Craig Gillard 0410 553 557

Principal/Licensee | craig.gillard@ljhooker.com.au

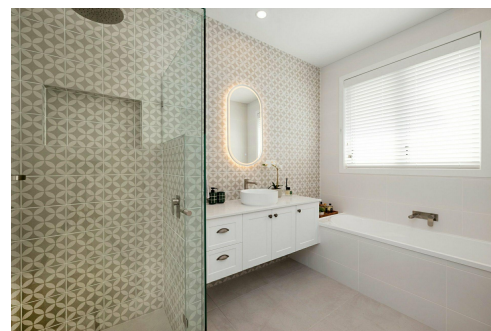
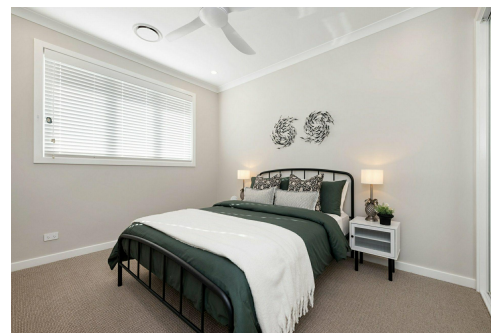
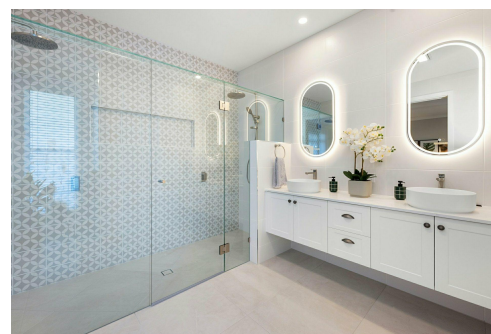
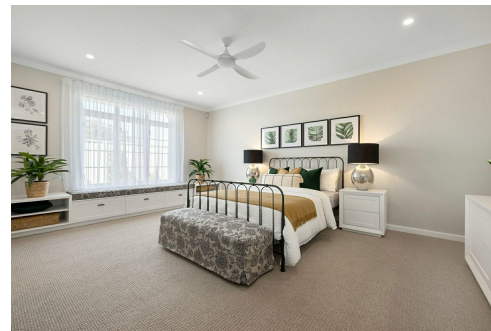
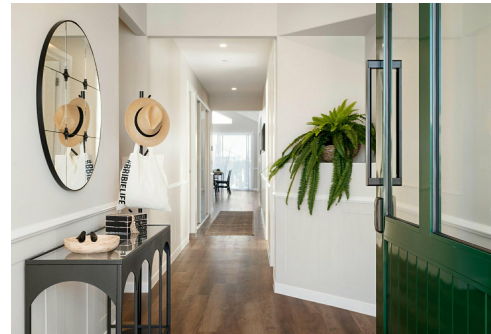
Petra Gillard 0424 744 984

Director | petra.gillard@ljhooker.com.au

LJ Hooker Bribie Island (07) 3400 1900

16/19 Benabrow Avenue, BELLARA QLD 4507

bribieisland@ljhooker.com.au | sales.bribieisland@ljhooker.com.au



Disclaimer: All information contained therein is gathered from relevant third parties sources. We cannot guarantee or give any warranty about the information provided. Interested parties must rely solely on their own enquiries.

LJ Hooker Bribie Island
(07) 3400 1900



156 Cosmos Avenue BANKSIA BEACH

ARTIST'S IMPRESSION ONLY: While every attempt has been made to ensure the accuracy of this floor plan's areas and measurements of doors, windows, rooms and all other items are approximate and no responsibility is taken for any error, omission, or mis-statement. This plan is for illustrative purposes only and should only be used as such by any prospective purchaser.
Floor plan by: www.open2view.com.au

TOTAL: 370m²

