

11/19 NAMITJIRA PLACE, BALLINA

SOLD



Ballina, 11/19 Namitjira Place

Welcome to your coastal retreat in Ballina

Auction Location: Lennox Head Cultural Centre

Nestled in the heart of convenience and serenity, this top-floor 2-bedroom, 1-bathroom unit offers a perfect blend of modern comfort and coastal charm, with your very own private roof-top terrace!

Step inside to discover an elevated outlook over the adjoining parkland where the spacious living area seamlessly flows to a private deck, where you can relish in tranquil water glimpses.

Featuring a sleek kitchen boasting ample natural light and abundant storage space, making meal preparation a breeze..

Retreat to the generously-sized master bedroom, complete with deck access connecting to



Disclaimer: All information contained therein is gathered from relevant third parties sources. We cannot guarantee or give any warranty about the information provided. Interested parties must rely solely on their own enquiries.

2

1

1

For Sale
Auction

View
ljhooke.com.au/1XDTF5A

Contact
Luke Shay
0416 275 607
luke.shay@ljhooke.com.au

LJ Hooker Ballina
(02) 6686 2711

the living area, offering a seamless indoor-outdoor lifestyle. A second bedroom provides flexibility for guests, a home office, or additional living space to suit your needs.

Located just a stone's throw away from the idyllic North Creek, playground, park, skate park, and vibrant shops, this residence offers unparalleled convenience for families, professionals, and retirees alike. And with the breathtaking beaches of Ballina just moments away, every day feels like a vacation.

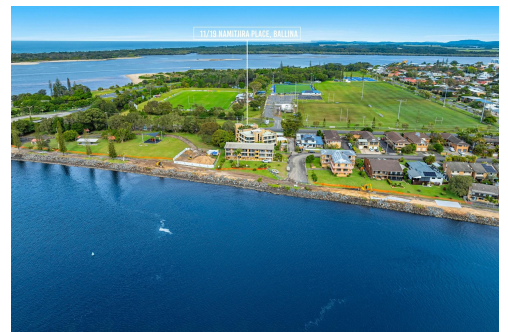
Contact Luke Shay for more information on 0416 275 607

More About this Property

Property ID	1XDTF5A
Property Type	Unit

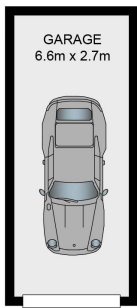
Luke Shay 0416 275 607
Salesperson | luke.shay@ljhooker.com.au

LJ Hooker Ballina (02) 6686 2711
87 - 89 River Street, BALLINA NSW 2478
ballina.ljhooker.com.au | ballina@ljhooker.com.au

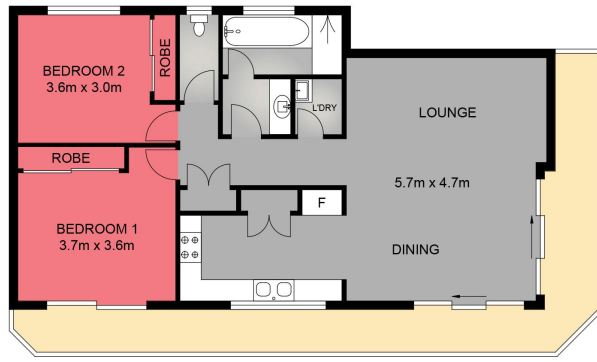


LJ Hooker Ballina
(02) 6686 2711

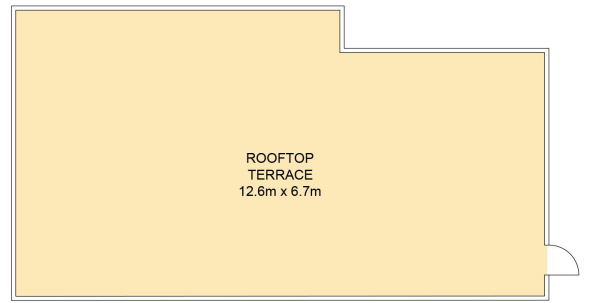
Disclaimer: All information contained therein is gathered from relevant third parties sources. We cannot guarantee or give any warranty about the information provided. Interested parties must rely solely on their own enquiries.



GROUND LEVEL




UPPER LEVEL



ROOFTOP TERRACE

Dimensions are approximate. All information contained herein gathered from sources we believe to be reliable. However we cannot guarantee its accuracy and interested persons should rely on their own enquiries © visionmedia.vision 2024.

INT : 77.5m²
EXT : 97.3m²
GARAGE : 17.8m²



11/19 Namitjira Place, Ballina



LJ Hooker Ballina
(02) 6686 2711

Disclaimer: All information contained therein is gathered from relevant third parties sources. We cannot guarantee or give any warranty about the information provided. Interested parties must rely solely on their own enquiries.