



1/41 Fox Street, Ballina

Ground floor unit in a desirable location.

Located in one of Ballina's most desirable pockets, this street-front ground floor unit offers effortless living just metres from North Creek. Part of a small, well-maintained complex, it's an ideal choice for downsizers, first-home buyers or investors.

Tiled throughout for easy care, the home features an open-plan lounge and dining area, complemented by a practical kitchen with electric appliances, overhead cupboards and a neutral colour palette.

Accommodation includes two bedrooms, the master with a walk-in robe and the second with a built-in robe plus a central bathroom and a separate internal laundry.

Additional features include:

- Single lock-up garage with additional storage space.
- Central bathroom with a separate bath tub and shower.
- Located just metres from North Creek, Meldrum park and the proper cafe.

2 🏠 1 🚿 1 🚗

FOR SALE
Contact Agent

AGENTS

Travers Golding
0481 257 710
travers.golding@ljhooker.com.au

AGENCY

LJ Hooker Ballina
(02) 6686 2711

All information contained therein is gathered from relevant third parties sources.
We cannot guarantee or give any warranty about the information provided.
Interested parties must rely solely on their own enquiries.

 **LJ Hooker**

MORE DETAILS

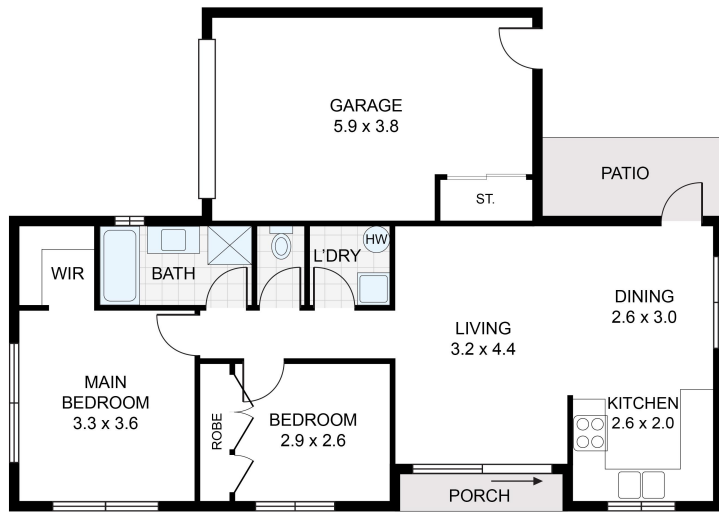
Property ID 1YC2F5A
Property Type Unit
Including Toilets (1)
Balcony
Built-in-Robes

Travers Golding 0481 257 710
Salesperson | travers.golding@ljhooker.com.au

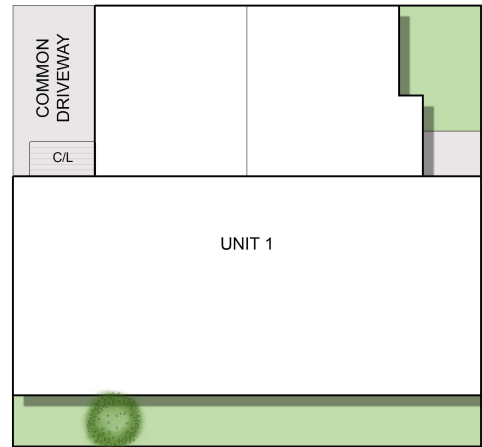
LJ Hooker Ballina (02) 6686 2711
87 - 89 River Street, BALLINA NSW 2478
ballina.ljhooker.com.au | ballina@ljhooker.com.au



All information contained therein is gathered from relevant third parties sources.
We cannot guarantee or give any warranty about the information provided.
Interested parties must rely solely on their own enquiries.



UNIT 1 : 91m²



FOX STREET
SITE PLAN

1/41 Fox Street, Ballina

Floor Plan Disclaimer - Media Drive (MD) floor plans / site plans are intended as an approximate guide only. No representations or warranties of any nature are given or intended and any person using this information other than as a guide should always rely on their own enquiries. Media Drive property marketing services / 0413979054 / Photography, Floor plans, Video, Aerial photography / www.mediadrive.com.au



APPROXIMATE AREAS

INTERNAL FLOOR SPACE - 69m²

EXTERNAL FLOOR SPACE - 10m²

GARAGE - 22m²

All information contained therein is gathered from relevant third parties sources. We cannot guarantee or give any warranty about the information provided. Interested parties must rely solely on their own enquiries.

