



14 Vista Circuit, Bahrs Scrub

## Spacious Family Living With Caravan & Side Access Potential!

Positioned in a quiet pocket of Bahrs Scrub, this well-maintained family home offers the perfect combination of space, comfort and practicality on a generous 535m<sup>2</sup> block. Whether you are searching for your first home, a low-maintenance investment or a property with extra room for the caravan, trailer or toys, this one ticks all the boxes.

Designed for easy everyday living, the home features a spacious open-plan kitchen, dining and living zone that flows effortlessly out to the covered alfresco entertaining area and fully fenced backyard. There is plenty of room for kids and pets to enjoy, while the large frontage offers fantastic potential for side access or caravan parking at the front of the property.

The modern kitchen sits at the heart of the home with ample storage, great bench space and a functional layout that keeps you connected while entertaining family and friends. A separate carpeted lounge room provides an additional living space to relax and unwind.

The master suite is privately positioned and complete with a walk-in

4  2  2 

### FOR SALE

Offers Over \$899,000

### VIEW

Sat 4th Jul @ 9:00AM - 9:30AM

### AGENTS

Nicole Hintz  
0403 895 705  
nhintz@ljhg.com.au

Liza Neuss  
0447 006 098  
liza@ljhg.com.au

### AGENCY

LJ Hooker Ormeau  
(07) 5549 4500

All information contained therein is gathered from relevant third parties sources.  
We cannot guarantee or give any warranty about the information provided.  
Interested parties must rely solely on their own enquiries.

 **LJ Hooker**

robe and ensuite, while the remaining three bedrooms all include built-in robes and ceiling fans. With air-conditioning, neutral tones and a practical floorplan throughout, this is a home ready to move straight into and enjoy.

#### Property Features:

- 4 spacious bedrooms with ceiling fans
- Master bedroom with walk-in robe & ensuite
- Separate carpeted lounge room
- Open-plan kitchen, dining & family area
- Air-conditioning to main living area
- Modern kitchen with island bench & ample storage
- Covered outdoor entertaining area
- Fully fenced 535m<sup>2</sup> block
- Excellent front yard space for caravan or trailer parking potential
- Double lock-up garage with internal access
- Water tank
- Low-maintenance family living

Conveniently located close to local schools, parks, shopping centres and the M1, this home offers an easy lifestyle in a growing family-friendly community with Brisbane and the Gold Coast both within comfortable reach.NS

#### MORE DETAILS

|               |   |
|---------------|---|
| Property ID   | 1YNQGWH   |
| Property Type | House   |
| House Size    | 194 m2  |
| Land Area     | 535 m2  |
| Including     | Outdoor Entertaining<br>Built-in-Robes<br>Remote Garage<br>Water Tank |

#### Nicole Hintz 0403 895 705

Director | L.R.E.A | Independent Contractor | [nhintz@ljhgc.com.au](mailto:nhintz@ljhgc.com.au)

#### Liza Neuss 0447 006 098

Sales Associate to Nicole Hintz Independent Contractor | [liza@ljhgc.com.au](mailto:liza@ljhgc.com.au)

#### LJ Hooker Ormeau (07) 5549 4500

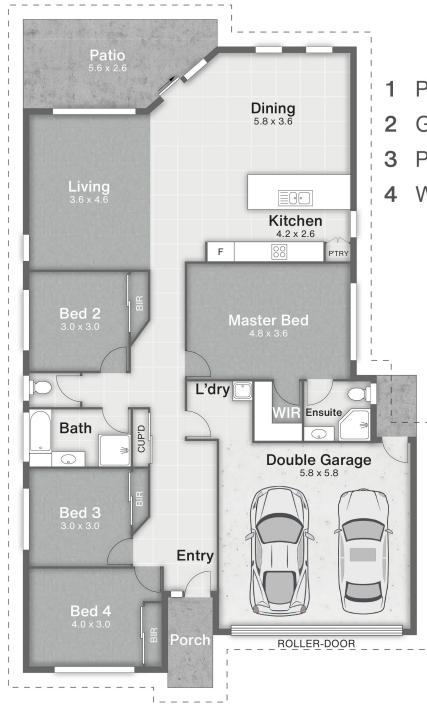
Unit 10 Norfolk Village Shopping Ctr, 170-174 Pascoe Road,  
ORMEAU QLD 4208

[ormeau.ljhooker.com.au](http://ormeau.ljhooker.com.au) | [ormeau@ljhgc.com.au](mailto:ormeau@ljhgc.com.au)

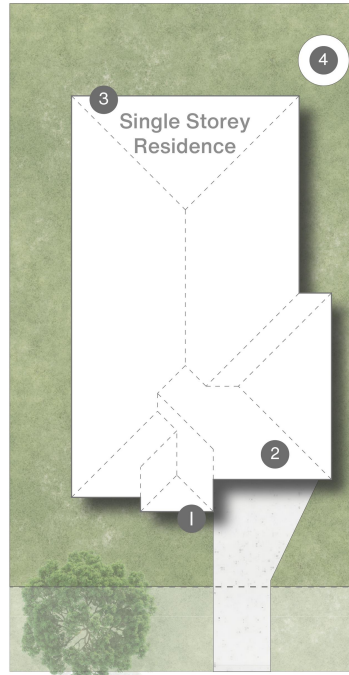




(Not In Position)



- 1 Porch
- 2 Garage
- 3 Patio
- 4 Water Tank



Vista Circuit

14 Vista Circuit **BAHRS SCRUB**

4 | 2 | 2 | 194m<sup>2</sup> | 535m<sup>2</sup>



**DISCLAIMER**  
 This is not a legal document; all measurements and dimensions are approximate and are subject to errors, omission or misstatement. No liability will be accepted. Plans are shown for marketing purposes only.