



Avalon Beach, 45/82 Avalon Parade

North-facing Ground-Floor Apartment in Pittwater Palms Retirement Village

Ideally located within a level stroll to cafes, shops, the cinema, beach, and medical facilities, this beautifully presented two-bedroom unit offers a light-filled and tranquil home. Positioned on the ground floor with 121sqm on title, it features a lovely garden courtyard, a generous main bedroom with a built-in robe, a well-sized second bedroom, an internal laundry with a second WC, and a lock-up garage-all within the convenience of the popular Pittwater Palms retirement village.

Disclaimer:

All information provided, including but not limited to the property description, price, and address, has been supplied to LJ Hooker Avalon Beach by third parties. While we believe this information to be reliable, we do not guarantee its accuracy. Interested parties should conduct their own due diligence and seek independent advice regarding any property or information on this website.



Disclaimer: All information contained therein is gathered from relevant third parties sources. We cannot guarantee or give any warranty about the information provided. Interested parties must rely solely on their own enquiries.



For Sale
Contact Agent

View
By Appointment

Contact
Thomas Mackay
0429 236 879
tom.mackay@ljhooker.com.au

Tina Friend
0499 154 655
tina.friend@ljhavalon.com.au

LJ Hooker Avalon Beach
(02) 9973 2999

More About this Property

Property ID	WCYF58
Property Type	Retirement
Land Area	121 m2
Including	Built-in-Robes Car Parking - Surface Close to Schools Close to Shops Close to Transport Disabled Access

Thomas Mackay 0429 236 879

Director | Licensee in Charge | tom.mackay@ljhooker.com.au

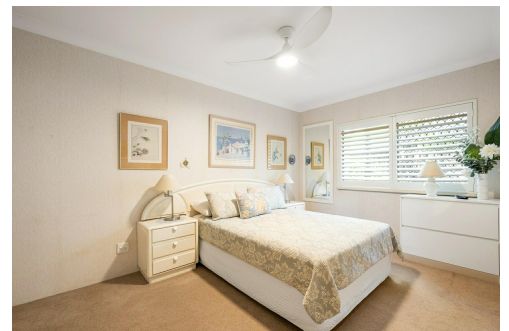
Tina Friend 0499 154 655

Sales Associate | tina.friend@ljhavalon.com.au

LJ Hooker Avalon Beach (02) 9973 2999

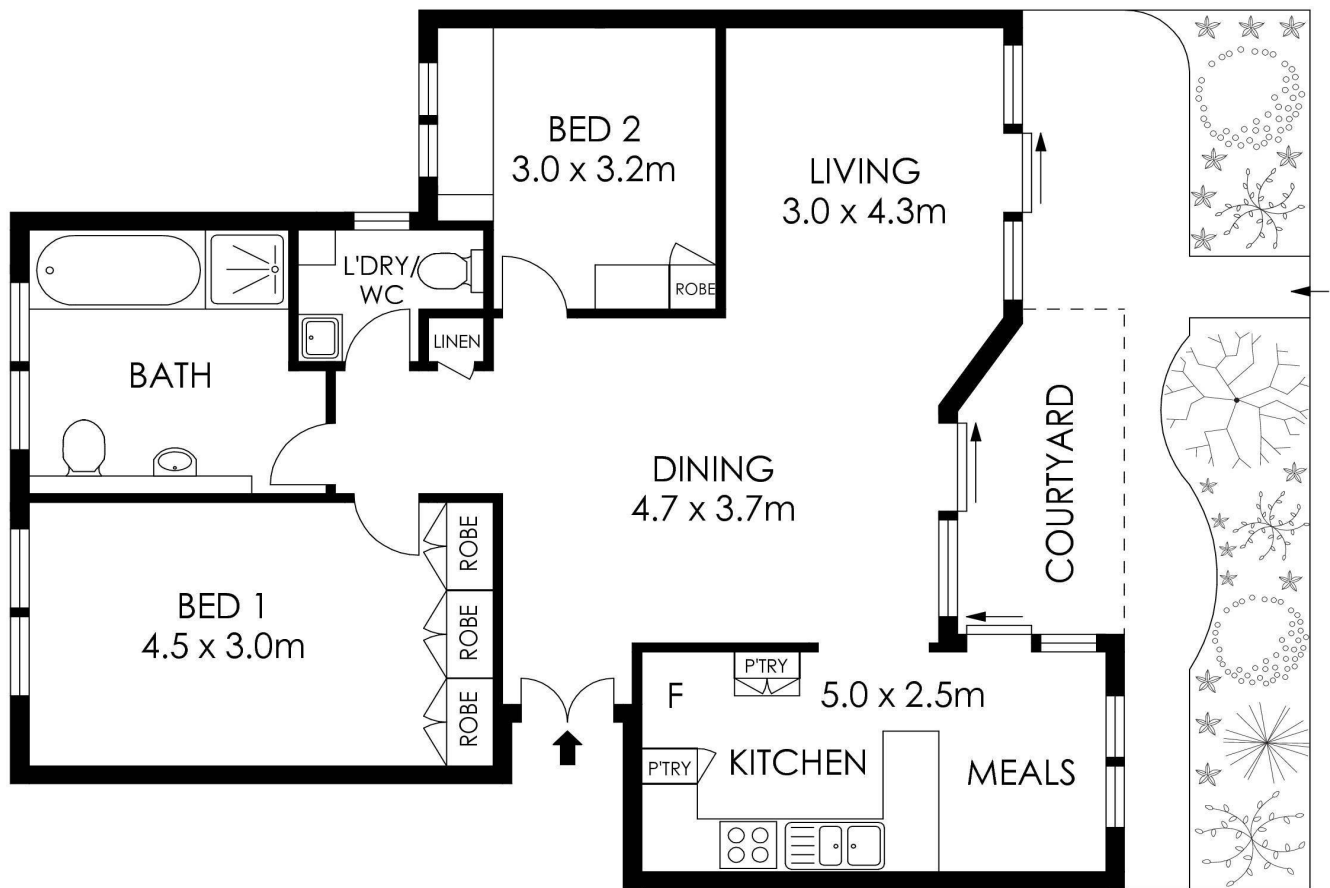
64 Old Barrenjoey Road, AVALON BEACH NSW 2107

avalonbeach.ljhooker.com.au | avalonbeach@ljhooker.com.au

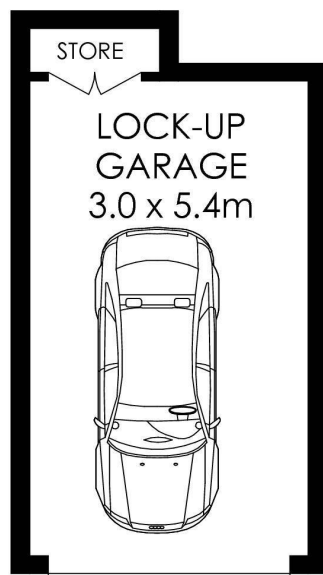


Disclaimer: All information contained therein is gathered from relevant third parties sources.
We cannot guarantee or give any warranty about the information provided. Interested parties must rely solely on their own enquiries.

LJ Hooker Avalon Beach
(02) 9973 2999



GROUND FLOOR



APPROX. INTERNAL AREA = 82 m²
 APPROX. EXTERNAL AREA = 30 m²
 TOTAL = 112 m²

PLANS SHOWN ONLY INDICATIVE OF LAYOUT. DIMENSIONS ARE APPROXIMATE.



45/82 Avalon Road, Avalon Beach

 LJ Hooker

 LJ Hooker

LJ Hooker Avalon Beach
 (02) 9973 2999

Disclaimer: All information contained therein is gathered from relevant third parties sources.
 We cannot guarantee or give any warranty about the information provided. Interested parties must rely solely on their own enquiries.