

Avalon Beach, 8 Paradise Avenue

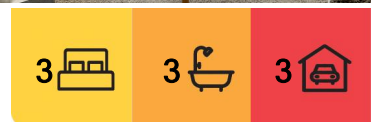
Deep Waterfront Luxury on Pittwater - The Ultimate Lifestyle

Crafted to integrate with the beauty of its absolute deep waterfront setting, this refined yet decidedly glamorous home has been designed for the water loving enthusiast, with first class boating facilities surrounded by some of the most elite. Taking in the views from every angle, the highly functional tri level design opens to large decks on two levels, which affords the sensation of seamlessly floating above the water. There's a choice of living areas, plus two restful bedrooms on the upper level, while a lower level tv room and third bedroom is perfect for teens or guests. It is located a short stroll to Paradise Beach, walking distance to Avalon Sailing Club, the village, express city buses and the surf.

- Basks in ever-changing views, watch the boats come and go
- Captivates by day and transforms into a serene dream at night
- Free flowing living/dining area warmed by a natural fireplace
- Dressed in sophisticated nautical themes, high-end inclusions



Disclaimer: All information contained therein is gathered from relevant third parties sources. We cannot guarantee or give any warranty about the information provided. Interested parties must rely solely on their own enquiries.



For Sale
Contact Agent

View
ljhooker.com.au/VZ2F58

Contact
Jonathan Gosselin
0488 011 870
jono.gosselin@ljhooker.com.au
Peter Robinson
0401 219 077
peter.robinson@ljhooker.com.au

LJ Hooker Avalon Beach
(02) 9973 2999

- A sequence of sliding doors offers a seamless outdoor transition
- Large decks on two levels which are perfect for entertaining or relaxing
- Chefs kitchen with premium Bosch appliances, gas cooktop and meals bar
- Two upstairs bedrooms open to balcony, main with walk-in and ensuite
- Lower level tv/rumpus, third bedroom or teenage retreat
- Designer bathrooms, functional laundry, storage with bespoke joinery
- Lock up garage, plus two additional off-street parking spaces
- Easy access to a large boatshed, jetty, and boat pen
- The perfect permanent lifestyle home or ideal holiday option

More About this Property

Property ID	VZ2F58
Property Type	House
Land Area	1080 m ²

Jonathan Gosselin 0488 011 870

Licensed Real Estate Agent | jono.gosselin@ljhooker.com.au

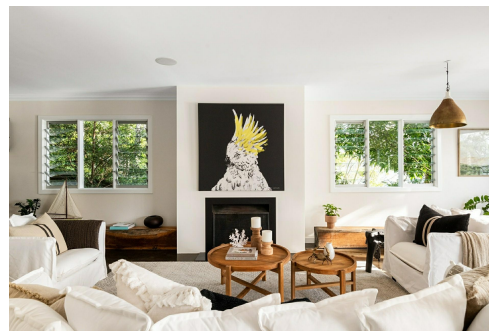
Peter Robinson 0401 219 077

Principal " Peter Robinson Real Estate Pty Ltd CLN 10121506 | peter.robinson@ljhooker.com.au

LJ Hooker Avalon Beach (02) 9973 2999

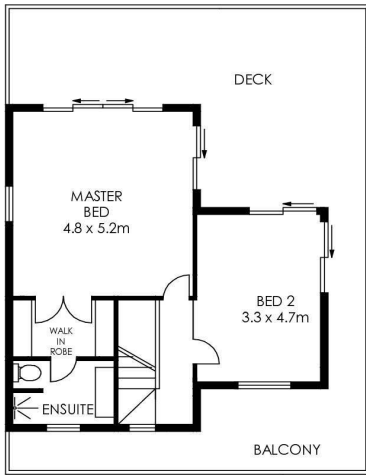
64 Old Barrenjoey Road, AVALON BEACH NSW 2107

avalonbeach.ljhooker.com.au | avalonbeach@ljhooker.com.au

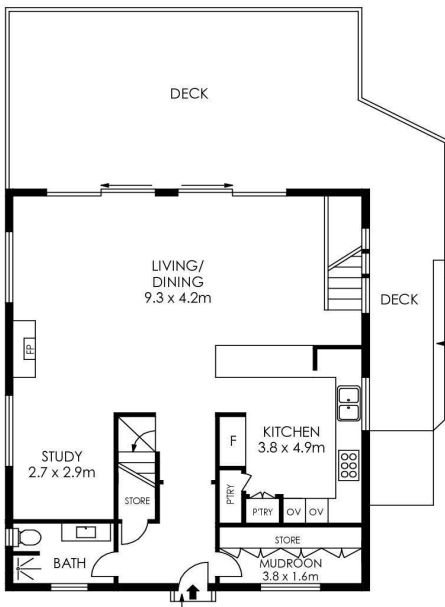


LJ Hooker Avalon Beach
(02) 9973 2999

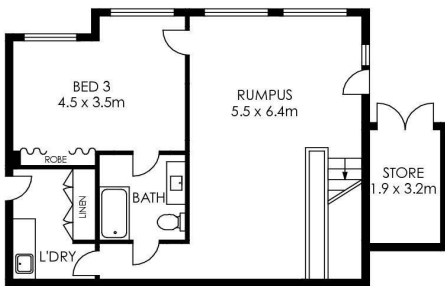
Disclaimer: All information contained therein is gathered from relevant third parties sources. We cannot guarantee or give any warranty about the information provided. Interested parties must rely solely on their own enquiries.



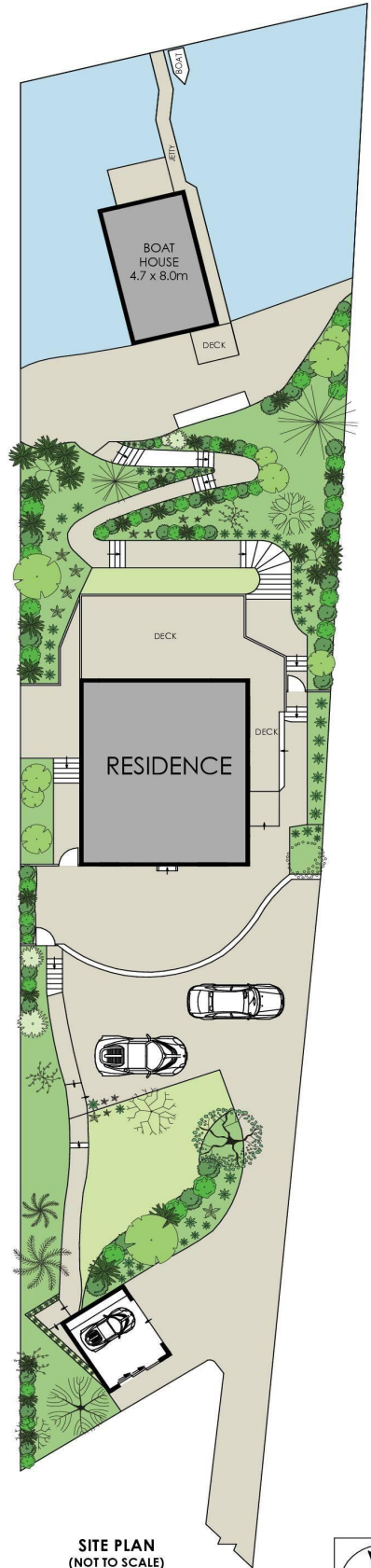
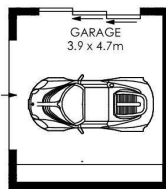
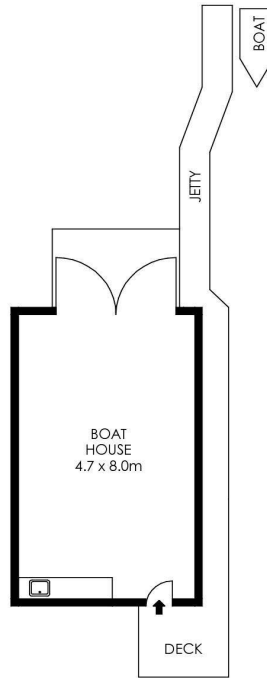
UPPER LEVEL



ENTRY LEVEL



LOWER LEVEL



SITE PLAN (NOT TO SCALE)



APPROX. INTERNAL AREA = 227 m²
 APPROX. EXTERNAL AREA = 181 m²
 TOTAL = 408 m²
 LAND SIZE = 1124 m²

PLANS SHOWN ONLY INDICATIVE OF LAYOUT. DIMENSIONS ARE APPROXIMATE.

8 Paradise Avenue, Avalon Beach



LJ Hooker Avalon Beach
 (02) 9973 2999

Disclaimer: All information contained therein is gathered from relevant third parties sources. We cannot guarantee or give any warranty about the information provided. Interested parties must rely solely on their own enquiries.