



Avalon Beach, 69 Dolphin Crescent

Coming Soon!

Idyllic North Avalon Location

Disclaimer:

All information contained herewith, including but not limited to the general property description, price and the address, is provided to LJ Hooker Newport by third parties. We have obtained this information from sources we believe to be reliable; however, we cannot guarantee its accuracy. The information contained herewith should not be relied upon and you should make your own enquiries and seek advice in respect of this property or any property on this website.



For Sale
Contact Agent

View
By Appointment

Contact
Reade Havenstein
0413 859 742
rhavenstein@ljhnewport.com.au



LJ Hooker Newport
(02) 9979 1111

Disclaimer: All information contained therein is gathered from relevant third parties sources. We cannot guarantee or give any warranty about the information provided. Interested parties must rely solely on their own enquiries.

More About this Property

Property ID	1AGSG5W
Property Type	House
Land Area	695 m2

Reade Havenstein 0413 859 742

Sales Executive | rhavenstein@ljhnewport.com.au

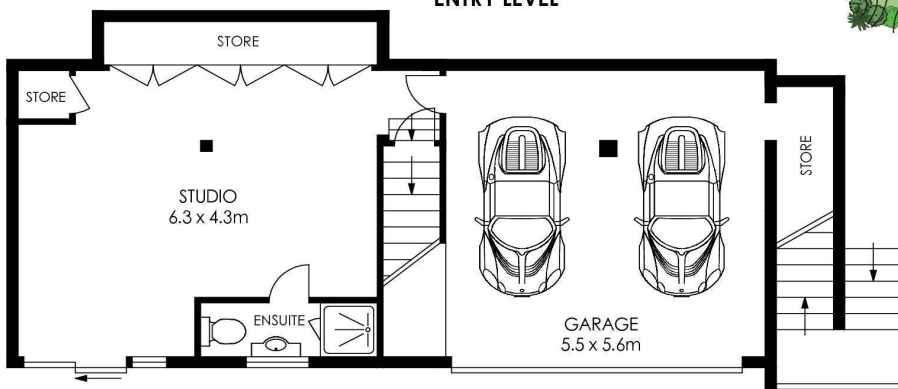
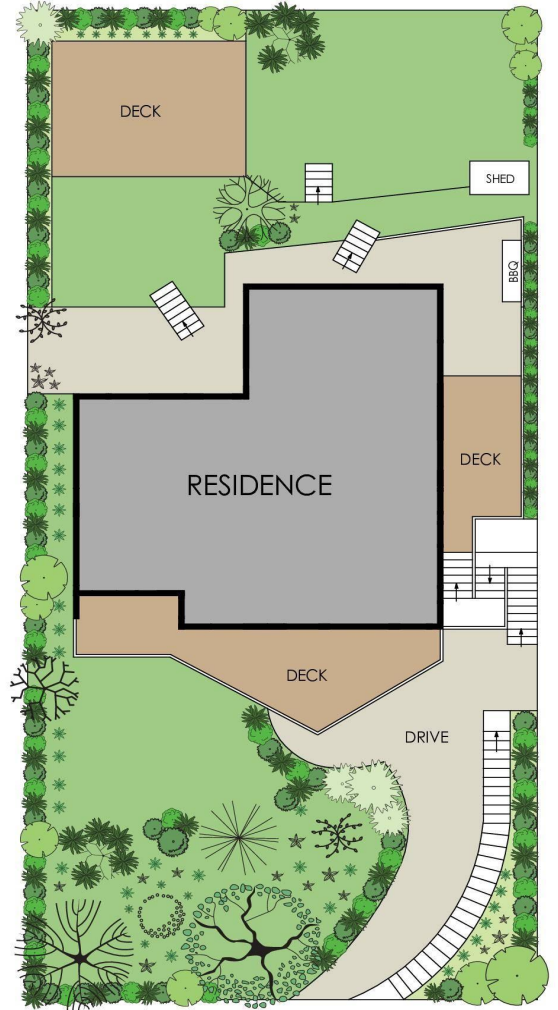
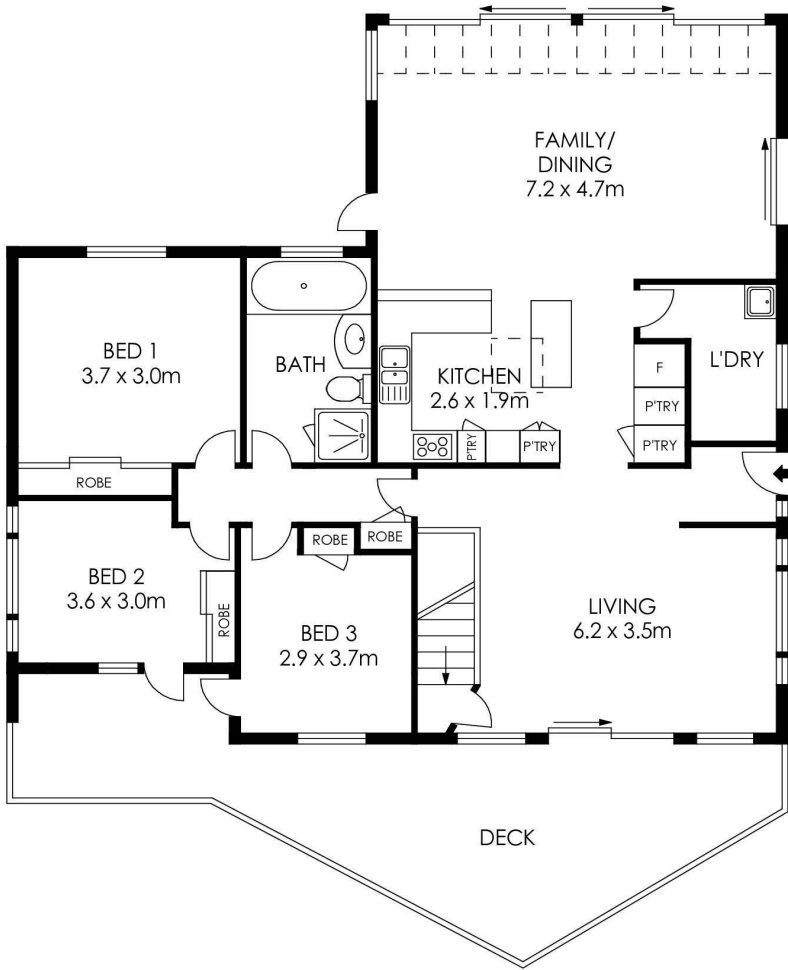
LJ Hooker Newport (02) 9979 1111

303 Barrenjoey Road, NEWPORT NSW 2106
newport.ljhooker.com.au | newport@ljhnewport.com.au



LJ Hooker Newport
(02) 9979 1111

Disclaimer: All information contained therein is gathered from relevant third parties sources.
We cannot guarantee or give any warranty about the information provided. Interested parties must rely solely on their own enquiries.



LAND SIZE = 695m²

PLANS SHOWN ONLY INDICATIVE OF LAYOUT. DIMENSIONS ARE APPROXIMATE.



69 Dolphin Crescent, Whale Beach



LJ Hooker Newport
(02) 9979 1111

Disclaimer: All information contained therein is gathered from relevant third parties sources. We cannot guarantee or give any warranty about the information provided. Interested parties must rely solely on their own enquiries.