



Sold



68 Riverview Road, Avalon Beach

5 🏠 2 🚿 2 🚗

Where Panoramic Pittwater Views Meet Timeless Tranquillity

If there's a quintessential Pittwater lifestyle, this is the home that embodies it. Set high in the treetops with panoramic views across the waterfront, it's the kind of place where time slows down, harmony reigns and the eye focuses on the ancient, gravitational pull of Pittwater. It's a place to immediately unwind and shrug off the stress of the day - essential living that invites one to go barefoot, savouring the warmth of polished timber and simplicity of the design, all the while marveling at the quiet sophistication of the home.

Spanning two levels, each fronted by wide, graceful verandahs, this is where life is lived outside or in - it's always a tossup, as both options are completely captivating. There's a wonderful sense of spaciousness and dimension with its large, comfortable living areas, sky-high ceilings with exposed timber trusses and a dream kitchen for entertaining. There are three bedrooms on this level, two which open to the verandahs, while just about every room enjoys the Pittwater views. At ground level is a spacious guest suite on one side with a versatile studio space across the hall, each one extending to the lower-level deck.

A Pittwater retreat that's blissfully private and designed to weather the forces of nature and time, this home sits quietly within the treetop

FOR SALE
Contact Agent

AGENTS

Jonathan Gosselin
0488 011 870
jono.gosselin@ljhavalon.com.au

Angus Abrahams
0488 007 236
angus.abrahams@ljhavalon.com.au

AGENCY

LJ Hooker Avalon Beach
(02) 9973 2999

All information contained therein is gathered from relevant third parties sources. We cannot guarantee or give any warranty about the information provided. Interested parties must rely solely on their own enquiries.



canopy, just above the golden strip of Paradise Beach.

- Exquisite Pittwater retreat merges openness with privacy
- Spectacular water views from the 790sqm bushland block
- Generous proportions joined by a free-flowing, open design
- Both levels extend interiors to expansive, full-length verandahs
- High ceilings, exposed trusses, French doors, blackbutt floors
- Beautiful kitchen + butlers pantry; perfect for teaming up on meal prep
- Charming guest suite + flexible studio space on lower level
- All bedrooms, except one, open directly to the views + verandahs
- Air con, skylights, built-in bookshelves, inclinators from parking to house
- Indulge your green-thumb with the tiered flower gardens in back

MORE DETAILS

Property ID	WR3F58
Property Type	House
Land Area	790 m2

Jonothan Gosselin 0488 011 870

Licensed Real Estate Agent | jono.gosselin@ljhavalon.com.au

Angus Abrahams 0488 007 236

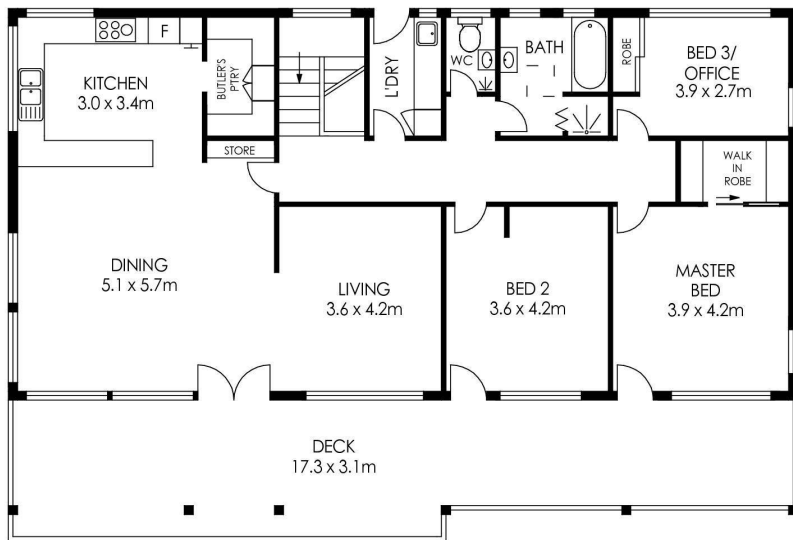
Licensed Real Estate Agent | angus.abrahams@ljhavalon.com.au

LJ Hooker Avalon Beach (02) 9973 2999

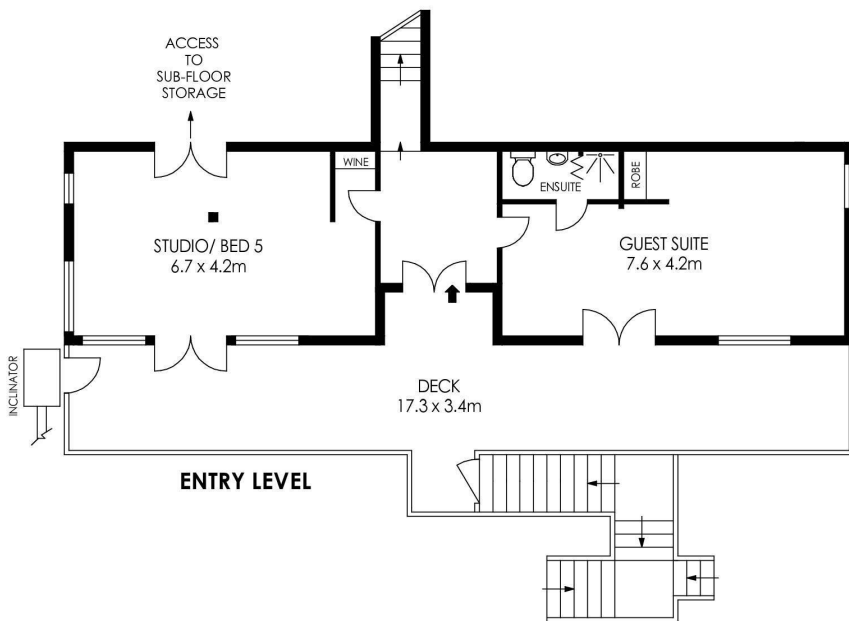
64 Old Barrenjoey Road, AVALON BEACH NSW 2107

avalonbeach.ljhooker.com.au | avalonbeach@ljhooker.com.au

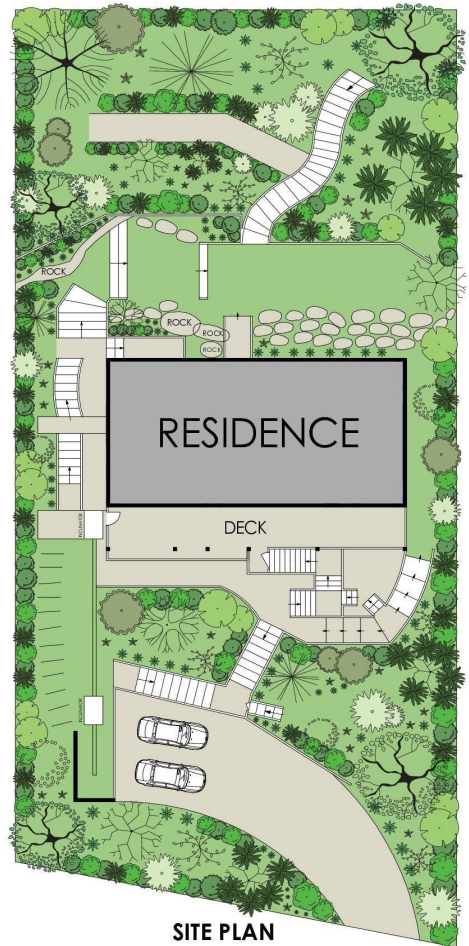




UPPER LEVEL



ENTRY LEVEL



SITE PLAN
(NOT TO SCALE)

APPROX. INTERNAL AREA = 216 m²
 APPROX. EXTERNAL AREA = 94 m²
 TOTAL = 310 m²
 LAND SIZE = 790 m²

PLANS SHOWN ONLY INDICATIVE OF LAYOUT. DIMENSIONS ARE APPROXIMATE.



68 Riverview Road, Avalon Beach



All information contained therein is gathered from relevant third parties sources.
 We cannot guarantee or give any warranty about the information provided.
 Interested parties must rely solely on their own enquiries.

