

6 Lewis Street, Avalon Beach

Seamless Blend of Privacy, Lifestyle and Luxury

Tucked into the relaxed coastal charm of Avalon Beach, this lifestyle home fuses barefoot ease with refined luxury. Nestled on Lewis Street, a hidden haven of retirees and young families where cars slow for kids on bikes and street parking is never an issue for guests, this home balances privacy with convenience. A modest and unassuming exterior in striking kohlr, softened by warm natural timbers, sits gracefully amid an established lush tropical and fragrant garden. A xeric, drought-resistant frontage ensures low-maintenance contemporary street appeal, while balconies, verandahs, expansive decks, and a series of skylights invite sea breezes and natural light to flow effortlessly from sunrise to sunset.

At the heart of the home, is the impressive kitchen. Open and connected via a retractable glass wall to the outdoor living areas, it allows seamless alfresco dining by the pool, while remaining adjacent to the chandeliered booth dining area, perfect for winter entertaining. Artisan European tiles and appliances, stainless steel chef's countertops and a Zip tap on a second concrete sink offering sparkling, boiling, and filtered water combine style with functionality, making the space both practical and striking.

4 🏠 3 🛏 2 🚗

FOR SALE
Sold \$3,700,000

AGENTS

Peter Robinson
0401 219 077
peter.robinson@ljhooker.com.au

Peter Robinson
0401 219 077
peter.robinson@ljhooker.com.au

AGENCY

LJ Hooker Palm Beach
(02) 9974 5999

All information contained therein is gathered from relevant third parties sources. We cannot guarantee or give any warranty about the information provided. Interested parties must rely solely on their own enquiries.

 **LJ Hooker**

Easy-care Moroccan stone flooring with underfloor heating spans the downstairs, paired with a stone fireplace and marble-clad laundry with guest shower for style and practicality.

Hawaiian-inspired indoor/outdoor living extends from the kitchen to a private tropical garden, home to over 100 palms, creating a lush, serene sanctuary. The crystal-clear heated, mineral salt pool, 5-person spa, BBQ and firepit area, hot and cold outdoor shower and child-friendly lawn completes the family beach home checklist.

Light timber custom joinery frames reading nooks, bookshelves, and the extra living space, which features a guest hideaway bed-creating a warm, versatile retreat for overnight visitors.

The primary retreat atop a stone and timber staircase, is a private sanctuary, featuring a generous walk-in wardrobe, and built-in home office with high-speed internet. The treetop-facing ensuite boasts underfloor heating, dual showers and sinks in custom vanity, curated lighting, an opening skylight and a separate louvred window for added sunlight and ventilation.

The freestanding egg-shaped stone bath sits adjacent to a private balcony, extending the retreat outdoors, capturing morning sun and birdsong, coastal breezes and colourful sunsets.

Upstairs guest bedrooms with treetop views and louvred windows for gentle breezes are finished in soft carpets and layered linens, offering calming, cosy retreats for rest and relaxation. The large, open-plan marble and stone family bathroom boasts a full stone bath, shower and triple sink, combining convenience with luxury.

The home also offers easy level access and secure double garage with tool storage, plus a side-sloped path to a tranquil, zen-like pebbled pond and under-house storage for surfboards, kayaks, and bikes.

Lewis Street sits at the edge of Avalon's sporting fields, with tennis courts, rugby and soccer clubs just across the footbridge. North Avalon shops, Barrenjoey High School, Avalon Shopping village and Avalon Beach are all within an approximately 800m radius. The location offers easy proximity without being impacted by the summer crowds.

At the end of George Street, the marina provides access for boating, fishing and paddleboarding across to the peaceful shores of Clareville Beach. Private school buses and the city bus stop are both close by, adding to the everyday convenience of the location. 6 Lewis Street also enjoys close access to both Whale Beach and Palm Beach making it an ideal base location to easily enjoy the full Northern Beaches lifestyle.

Every detail reflects international design sophistication-bespoke fittings, artisan tiling, and curated dimmable lighting complement contemporary architectural lines softened with natural textures. This house is perfectly positioned to bask in the natural light and seabreeze as the sun passes by overhead from sunrise to sunset. With a careful balance of resort-inspired indulgence and intimate comfort, this Avalon Beach home offers an all-weather lifestyle sanctuary, capturing the essence of elevated coastal living.

MORE DETAILS

Property ID BPDF6Z
Property Type House
Land Area 651 m2

Peter Robinson 0401 219 077

Principal â€” Peter Robinson Real Estate Pty Ltd CLN 10121506 |
peter.robinson@ljhooker.com.au

Peter Robinson 0401 219 077

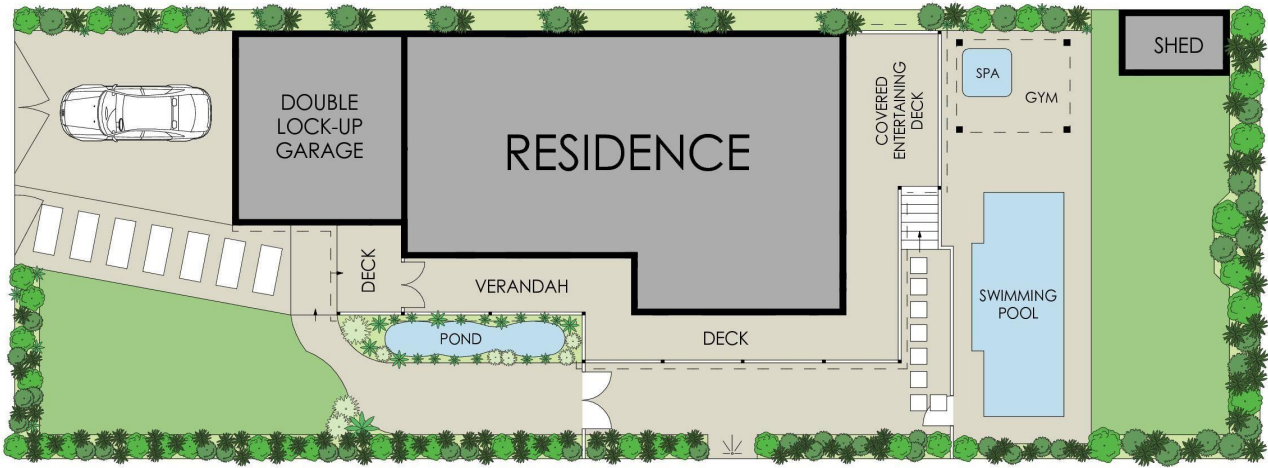
Principal â€” Peter Robinson Real Estate Pty Ltd CLN 10121506 |
peter.robinson@ljhooker.com.au

LJ Hooker Palm Beach (02) 9974 5999

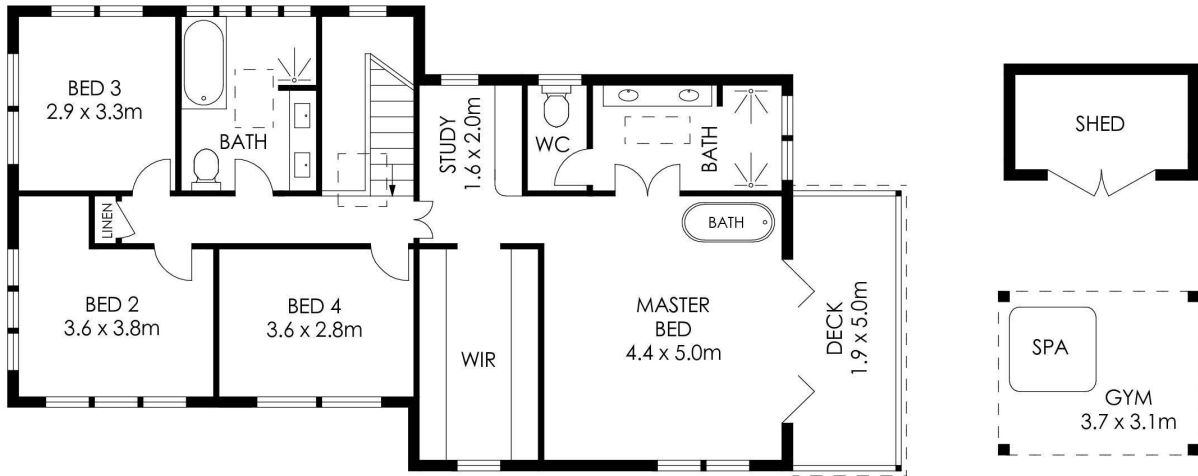
1073 Barrenjoey Road, PALM BEACH NSW 2108
palmbeach.ljhooker.com.au | office@ljhpb.com.au



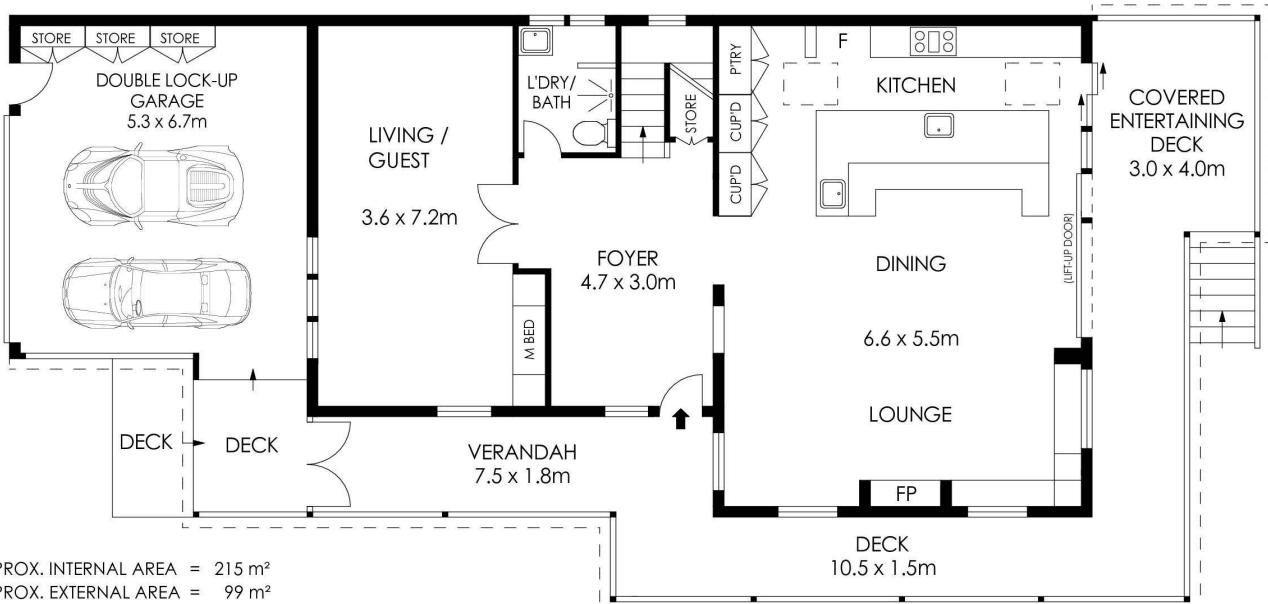
All information contained therein is gathered from relevant third parties sources.
We cannot guarantee or give any warranty about the information provided.
Interested parties must rely solely on their own enquiries.



SITE PLAN
(NOT TO SCALE)



UPPER LEVEL



ENTRY LEVEL

APPROX. INTERNAL AREA = 215 m²
 APPROX. EXTERNAL AREA = 99 m²
 TOTAL = 314 m²
 LAND SIZE = 651 m²

PLANS SHOWN ONLY INDICATIVE OF LAYOUT. DIMENSIONS ARE APPROXIMATE.

