



Avalon Beach, 37 Wandeen Road

Dazzling north views to Lion Island

It's a top-of-the-world view from a pristine, bushland setting - 180 degree vistas straight north to Lion Island, bordered by Palm Beach and Ku-ring-gai National Park on either side. This stylish split-level retreat takes full advantage of the position and the aspect; it's a private and peaceful oasis that's drenched in all day sun and the pure magic of Pittwater's most iconic backdrop.

Built in 1983 and coming to market for the very first time, this home has just been updated with contemporary appointments and fittings across the entire layout. Inside and out, it's immaculate and turnkey ready for its next act with a floorplan offering multiple decks and a choice of living zones; galleries of glass frame the views, while high, raked ceilings and wide plank floors deliver a fabulous beach house vibe. Been looking for a home with style and great functionality, but had given up on securing a view as well? Think again - this is a rare opportunity to have it all, in one delightful package.

3

2

2

Auction

Tue 2nd Sep @ 6:00PM

View

Sat 9th Aug @ 12:00PM - 12:30PM

Contact

Thomas Mackay

0429 236 879

tom.mackay@ljhooker.com.au

Tina Friend

0499 154 655

tina.friend@ljhavalon.com.au



Disclaimer: All information contained therein is gathered from relevant third parties sources. We cannot guarantee or give any warranty about the information provided. Interested parties must rely solely on their own enquiries.

LJ Hooker Avalon Beach
(02) 9973 2999

- Phenomenal, never-to-be-built-out north views to Lion Island
- Fresh, modern layout, split-level design, two distinct living zones
- Vast entertaining decks off main living areas; spectacular views
- Glass-wrapped interiors; flooded with light from sunrise to magic hour
- Updated kitchen features brand new appliances
- North-facing master with updated ensuite, private deck and views
- Freshly painted interiors + exterior
- New floating flooring throughout
- New R/C air con in living areas and master bedroom
- Easily accessible underhouse space
- 835sqm gorgeous bush block
- Short stroll to Taylors Point + Clareville Beach, steps to local bus line

More About this Property

Property ID	WNEF58
Property Type	House
Land Area	835 m2

Thomas Mackay 0429 236 879

Director | Licensee in Charge | tom.mackay@ljhooker.com.au

Tina Friend 0499 154 655

Sales Associate | tina.friend@ljhavalon.com.au

LJ Hooker Avalon Beach (02) 9973 2999

64 Old Barrenjoey Road, AVALON BEACH NSW 2107

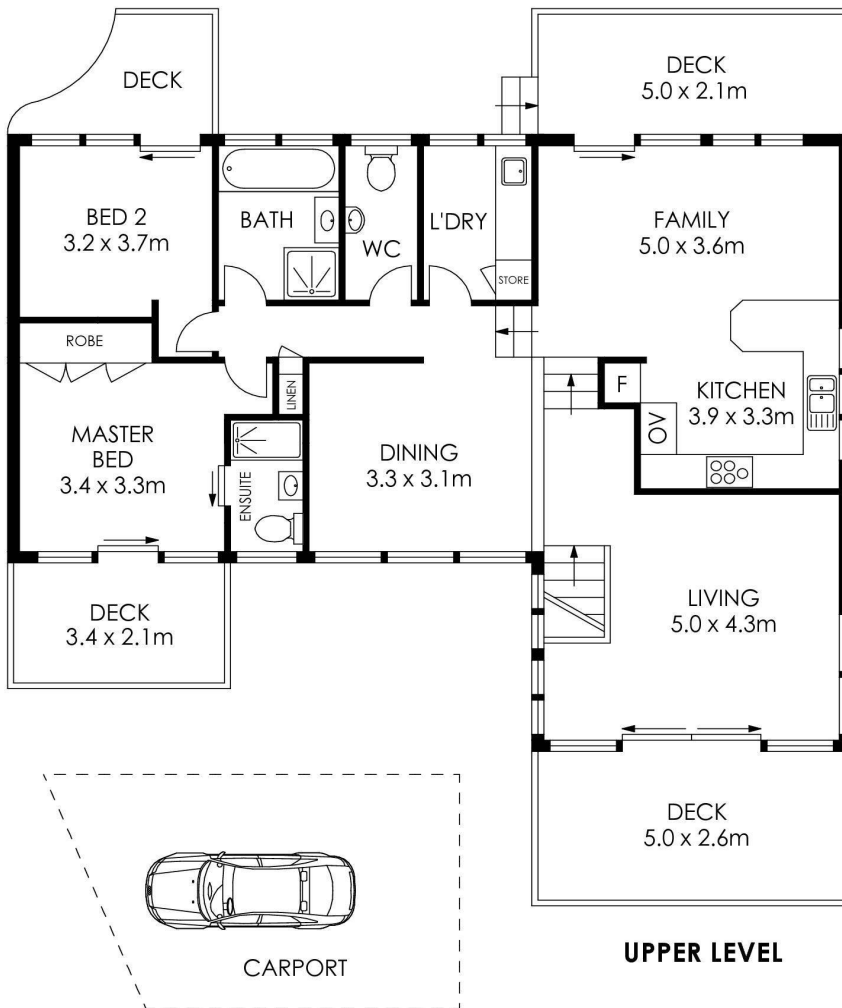
avalonbeach.ljhooker.com.au | avalonbeach@ljhooker.com.au



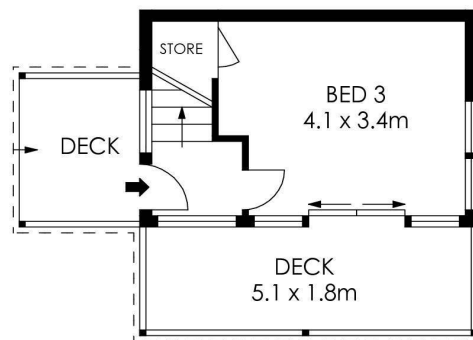
Disclaimer: All information contained therein is gathered from relevant third parties sources.

We cannot guarantee or give any warranty about the information provided. Interested parties must rely solely on their own enquiries.

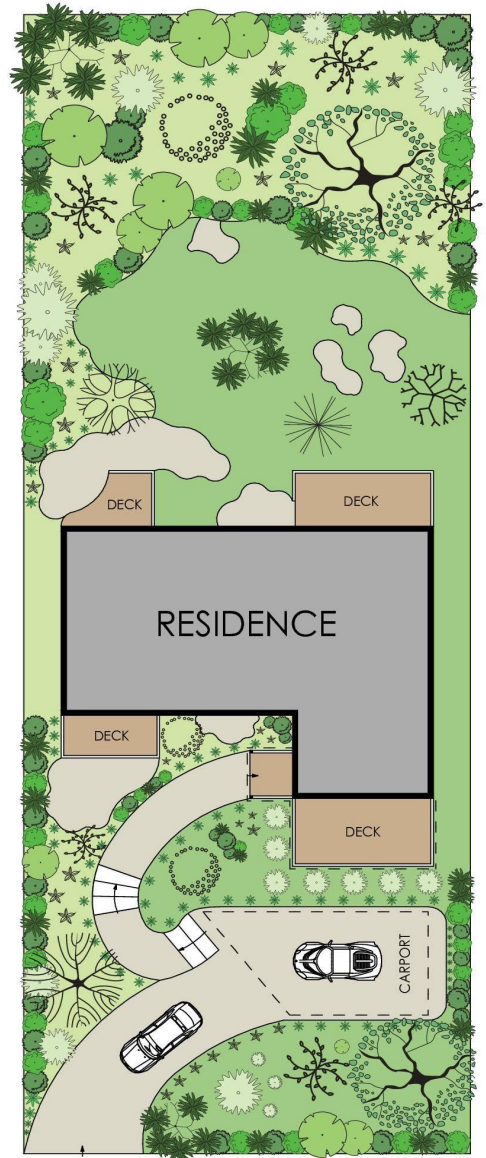
LJ Hooker Avalon Beach
(02) 9973 2999



UPPER LEVEL



ENTRY LEVEL



SITE PLAN
(NOT TO SCALE)

APPROX. INTERNAL AREA = 131 m²
 APPROX. EXTERNAL AREA = 76 m²
 TOTAL = 207 m²
 LAND SIZE = 835 m²

PLANS SHOWN ONLY INDICATIVE OF LAYOUT. DIMENSIONS ARE APPROXIMATE.



37 Wandeen Road, Clareville

LJ Hooker

LJ Hooker

LJ Hooker Avalon Beach
 (02) 9973 2999

Disclaimer: All information contained therein is gathered from relevant third parties sources. We cannot guarantee or give any warranty about the information provided. Interested parties must rely solely on their own enquiries.