



35 Marine Parade, Avalon Beach

Absolute Oceanfront at North Avalon

With panoramic views stretching the full arc of the beach all the way to Manly, it's easy to see why this address is so tightly held. A comprehensive renovation in 2020 has reimagined a classic 1950s weekender into a striking contemporary beach house, blending sleek modern design with a warm, tactile material palette—all framed by the endless blue of Avalon Beach and beyond.

Every element has been crafted for both impact and ease of living, with one of the most versatile layouts you'll find in a coastal home. The lower level is fully self-contained with its own entrance, making it ideal for Airbnb guests, extended family, a private workspace, or the ultimate teen hangout.

This is the kind of home that captures the laid-back energy of North Avalon, with a style that speaks to buyers everywhere.

4 2 2

FOR SALE

Expressions of Interest: Close 5th November, 3pm

VIEW

Sat 4th Oct @ 1:00PM - 1:30PM

AGENTS

BJ Edwards
0420 304 140
bjedwards@ljhpb.com.au

BJ Edwards
0420 304 140
bjedwards@ljhpb.com.au

AGENCY

LJ Hooker Palm Beach
(02) 9974 5999

All information contained therein is gathered from relevant third parties sources.
We cannot guarantee or give any warranty about the information provided.
Interested parties must rely solely on their own enquiries.



MORE DETAILS

Property ID	BQ6F6Z
Property Type	House
Land Area	664 m2
Including	Toilets (2)
	Water Front
	Water Views

BJ Edwards 0420 304 140

Licensed Real Estate Agent | bjedwards@ljhpb.com.au

BJ Edwards 0420 304 140

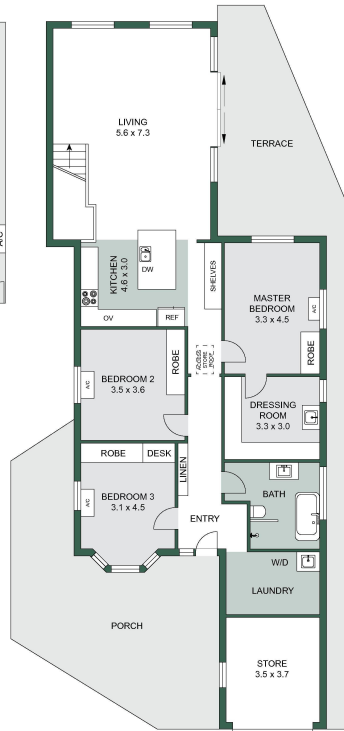
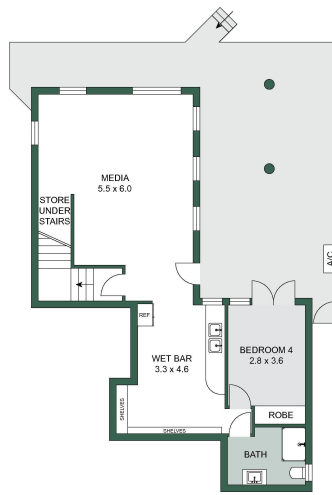
Licensed Real Estate Agent | bjedwards@ljhpb.com.au

LJ Hooker Palm Beach (02) 9974 5999

1073 Barrenjoey Road, PALM BEACH NSW 2108
palmbeach.ljhooker.com.au | office@ljhpb.com.au



All information contained therein is gathered from relevant third parties sources.
We cannot guarantee or give any warranty about the information provided.
Interested parties must rely solely on their own enquiries.



The site plan and floor plan are not to scale; measurements are indicative and in metres.
 Bushes and trees are placed for illustration purposes. Plans should not be relied on.
 Interested parties should make and rely on their own enquiries.

