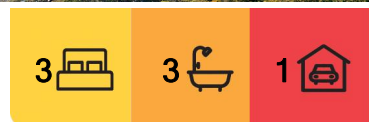


Avalon Beach, 33 Hilltop Road

Treetop House; an acclaimed design by Peter Stutchbury

Suspended within a towering canopy of Spotted Gum and Casuarinas, Treetop House is sited just beneath an ancient ridge-line above Pittwater, linking its pristine, bushland setting with the sky, earth and waterfront. Completed in 1993, it represents an important early work by Peter Stutchbury, recipient of AIA's Gold Medal and one of his original and highly acclaimed Pittwater Peninsular houses. As with all of Stutchbury's work, Treetop House has been consistently cited not only for its visionary concepts but the imaginative use of a robust, industrial material palette; the resulting design is clearly based on a deep knowledge and reverence for the surrounding landscape.

Comprised of a cantilevered platform above a vertical tower, the base is a blockwork, six-metre core; it's the structural anchor to the site and provides two levels that include a flexible work space/studio/guest suite on the ground floor with a private parent's retreat one level up. Resting above is a powerful, timber-framed platform, opened wide to the canopy —this is a fully liberated living space with a multi-functional design; cantilevered over the



For Sale
Contact Agent

View
ljhooker.com.au/W34F58

Contact
Thomas Mackay
0429 236 879
tom.mackay@ljhooker.com.au

Tina Friend
0499 154 655
tina.friend@ljhavalon.com.au



Disclaimer: All information contained therein is gathered from relevant third parties sources. We cannot guarantee or give any warranty about the information provided. Interested parties must rely solely on their own enquiries.

LJ Hooker Avalon Beach
(02) 9973 2999

landscape it accommodates several areas for sleep, work and leisure. Interiors can be opened entirely to the outdoors with a series of wide verandahs and decks nestled against the bushland site —the Pittwater views are magnificent.

The material palette engages simply and eloquently with the 1,071sqm site; the solid base acts as a trunk does, supporting its own canopy above; the concept is echoed throughout the structure with its oiled tallowwood floors, polished plywood joinery and a beautiful Jarrah staircase winding up the centre of the home. Daring in design, Treetop House offers the joyous, liberating richness of life lived high in the forest canopy.

- Completed in 1993; featured in design publications for three decades
- Sited on a 1,071sqm bushland block of Spotted Gums and Casuarinas
- Expansive Pittwater and bushland views from every part of the home, including stunning views of the Pacific from the top of the ridge
- Hand-crafted interiors, exposed trusses and a multi-functional design
- Internal lift from the studio space to the main living/entertaining level
- This space can open entirely to the outdoors on beautiful sunny days
- Feels suspended amid nature; well-protected from south/west winds
- Fluid, open kitchen; timber joinery, stainless benches, walk-in pantry
- Self-contained studio; ideal for artists, home office or 2nd living space
- Generous master retreat on its own level features cantilevered ensuite
- Two additional bedrooms open out to eastern deck and bush views
- Tallowwood floors, Jarrah staircases, casement windows of oiled cedar
- Wood fireplace; cedar slider doors connect interiors to eastern deck
- Peter Stutchbury design —dramatic, innovative & beautifully crafted
- Ample storage throughout, including loft storage above the stairwell

More About this Property

Property ID	W34F58
Property Type	House
House Size	255 m ²
Land Area	1071.82 m ²
Including	Built-in-Robes Bush Retreat Lift Installed Water Views

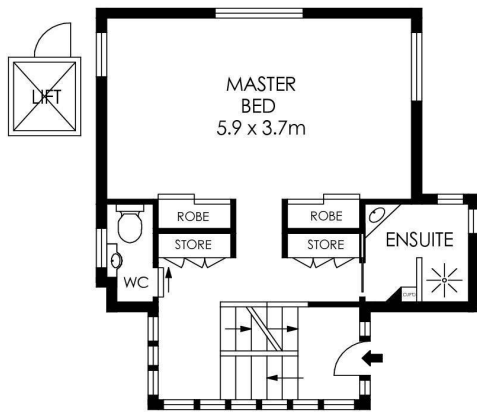
Thomas Mackay 0429 236 879
Principal | Licensee in Charge | tom.mackay@ljhooker.com.au
Tina Friend 0499 154 655
Sales Associate | tina.friend@ljhavalon.com.au

LJ Hooker Avalon Beach (02) 9973 2999
64 Old Barrenjoey Road, AVALON BEACH NSW 2107
avalonbeach.ljhooker.com.au | avalonbeach@ljhooker.com.au

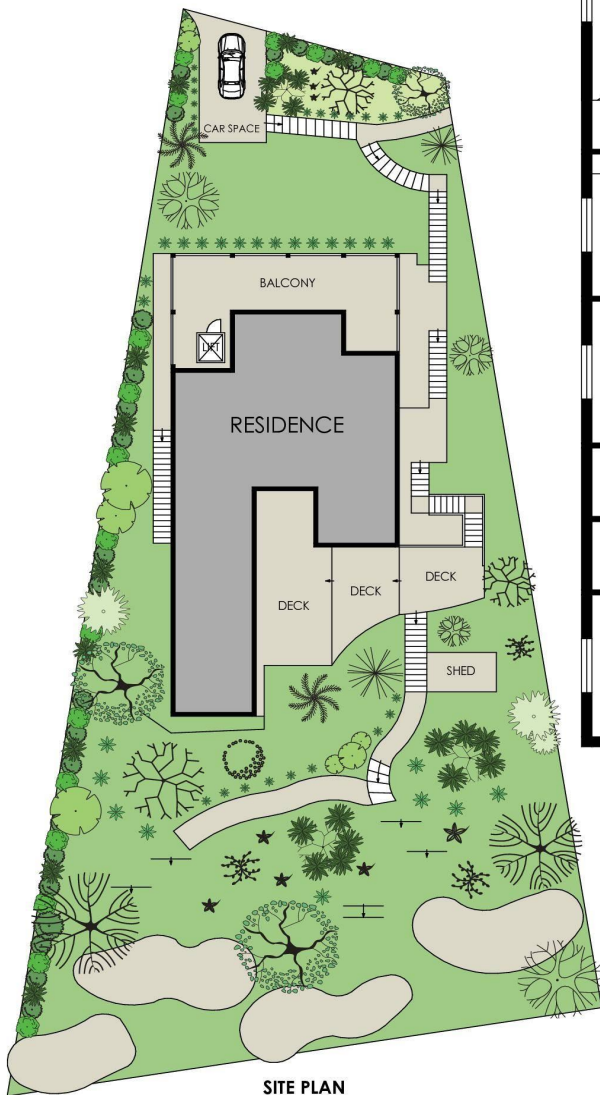


Disclaimer: All information contained therein is gathered from relevant third parties sources. We cannot guarantee or give any warranty about the information provided. Interested parties must rely solely on their own enquiries.

LJ Hooker Avalon Beach
(02) 9973 2999



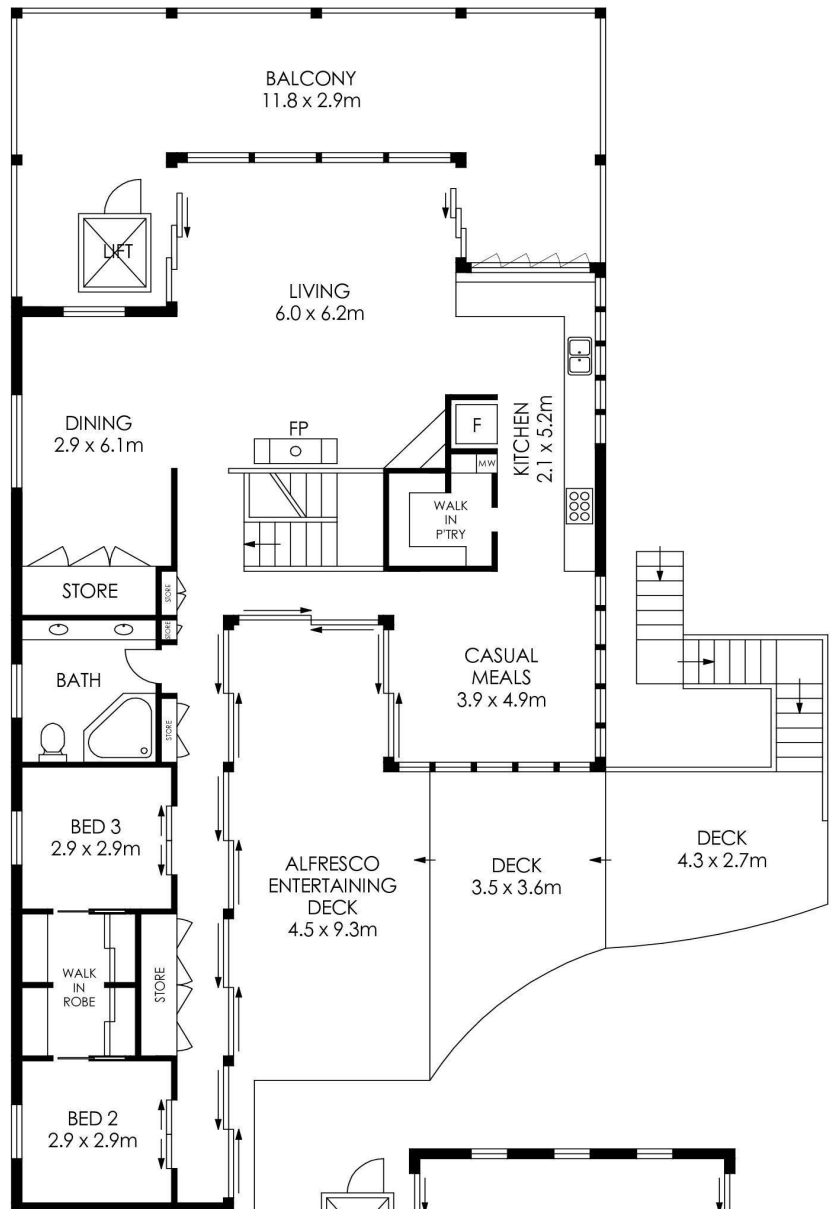
MIDDLE LEVEL



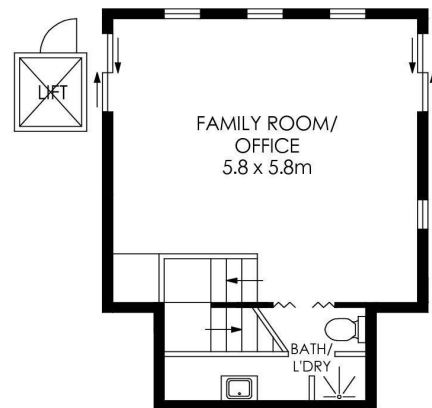
SITE PLAN
(NOT TO SCALE)

APPROX. INTERNAL AREA = 231 m²
 APPROX. EXTERNAL AREA = 110 m²
 TOTAL = 341 m²
 LAND SIZE = 1071 m²

PLANS SHOWN ONLY INDICATIVE OF LAYOUT. DIMENSIONS ARE APPROXIMATE.



UPPER LEVEL



LOWER LEVEL



33 Hilltop Road, Avalon Beach

 LJ Hooker

 LJ Hooker

LJ Hooker Avalon Beach
 (02) 9973 2999

Disclaimer: All information contained therein is gathered from relevant third parties sources.
 We cannot guarantee or give any warranty about the information provided. Interested parties must rely solely on their own enquiries.