

Avalon Beach, 26 Plateau Road

If these walls could talk, what a tale they'd tell

Built at a time when the area was only reachable by steamer ferry to Mona Vale and a long buggy ride over rough bush tracks, this is one of Avalon's earliest homes. It's a splendid example of the 'organic' school of design and was inspired by the first owner's close friendship with renowned American architect Walter Burley Griffin. Each of its three previous owners have held the property close and chosen to revel in its extraordinary character and singular charm.

It's easy to understand the devotion; steeped in history, the interiors are pure Australia - this is a home that ignites the thrill of discovery with its leadlight windows, original timber floors and a grand room at its centre. A massive sandstone fireplace anchors the space, while the double-height ceiling with exposed beams creates a wonderful sense of scale and drama. It's been updated in the kitchen and bathrooms, yet even today you'll still have the option of a vintage, wood-burning stove in the kitchen, along with a modern gas range.

5

3

2

For Sale
Contact Agent

View
ljhooker.com.au/W49F58

Contact
Thomas Mackay
0429 236 879
tom.mackay@ljhooker.com.au

Tina Friend
0499 154 655
tina.friend@ljhavalon.com.au



Disclaimer: All information contained therein is gathered from relevant third parties sources. We cannot guarantee or give any warranty about the information provided. Interested parties must rely solely on their own enquiries.

LJ Hooker Avalon Beach
(02) 9973 2999

Interiors connect to a full-length deck on the ocean side and shady sandstone terraces in front; the master suite and second bedroom are located on the main floor with two roomy loft bedrooms above, each with ocean views. The ground level is an added bonus, it's a fully self-contained 2-bedroom apartment ready for renovations. Offering scope to finish off additional living and/or bedroom spaces. Set on a vast 1530sqm parcel and dotted with fruit trees amid native gardens, it's an easy stroll to either Bilgola or Avalon beaches and the village centre.

- Vintage Australia; built in the 1930s, one of Avalon's earliest homes
- Cathedral ceilings feature exposed beams over original timber floors
- Leadlight windows, built-in bookshelves, grand sandstone fireplace
- Deck runs from end-to-end, offering sheltered and alfresco areas
- Vintage exteriors; classic mud-render finished in deep, rich ochre
- Modern kitchen and bathrooms plus defined living/dining areas
- Ocean views from both loft bedrooms and main floor master suite
- Lower level is self-contained; 2 bedroom, offers scope for additional living space
- Sanden hot water system
- 1530sqm property on the ridgeline; short walk to beach & village

More About this Property

Property ID	W49F58
Property Type	House
Land Area	1530 m ²

Thomas Mackay 0429 236 879

Principal | Licensee in Charge | tom.mackay@ljhooker.com.au

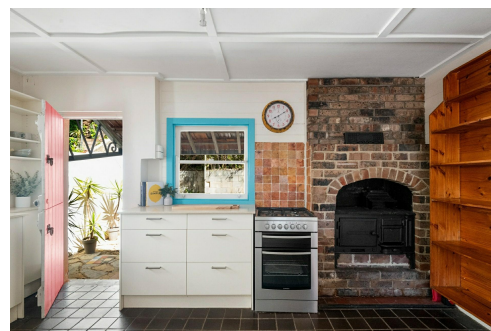
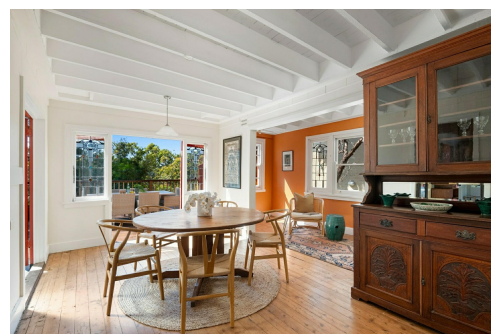
Tina Friend 0499 154 655

Sales Associate | tina.friend@ljhavalon.com.au

LJ Hooker Avalon Beach (02) 9973 2999

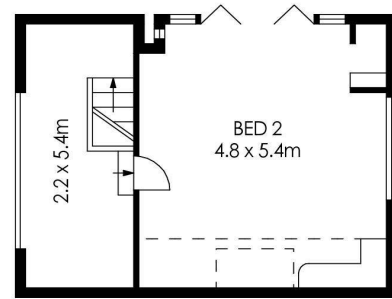
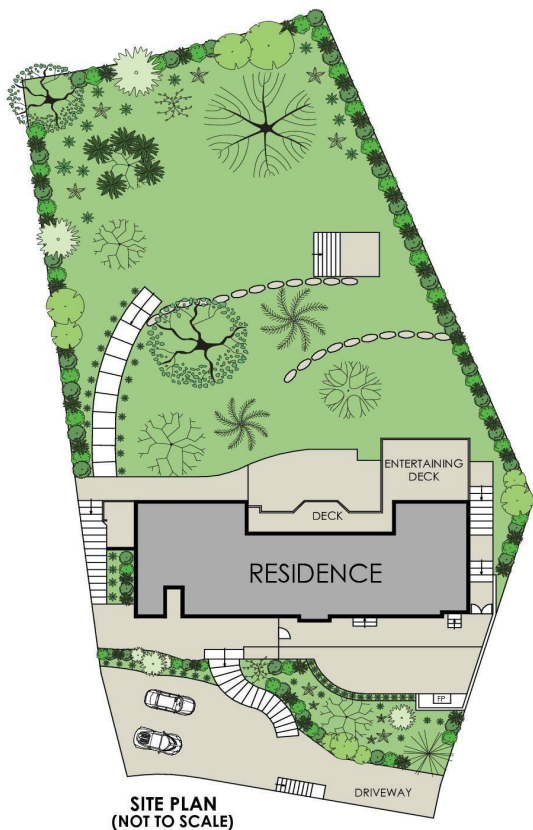
64 Old Barrenjoey Road, AVALON BEACH NSW 2107

avalonbeach.ljhooker.com.au | avalonbeach@ljhooker.com.au

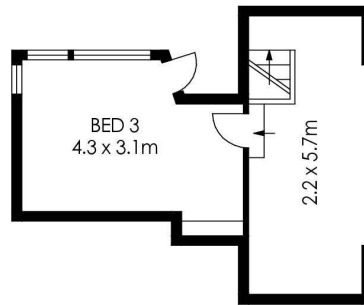


Disclaimer: All information contained therein is gathered from relevant third parties sources. We cannot guarantee or give any warranty about the information provided. Interested parties must rely solely on their own enquiries.

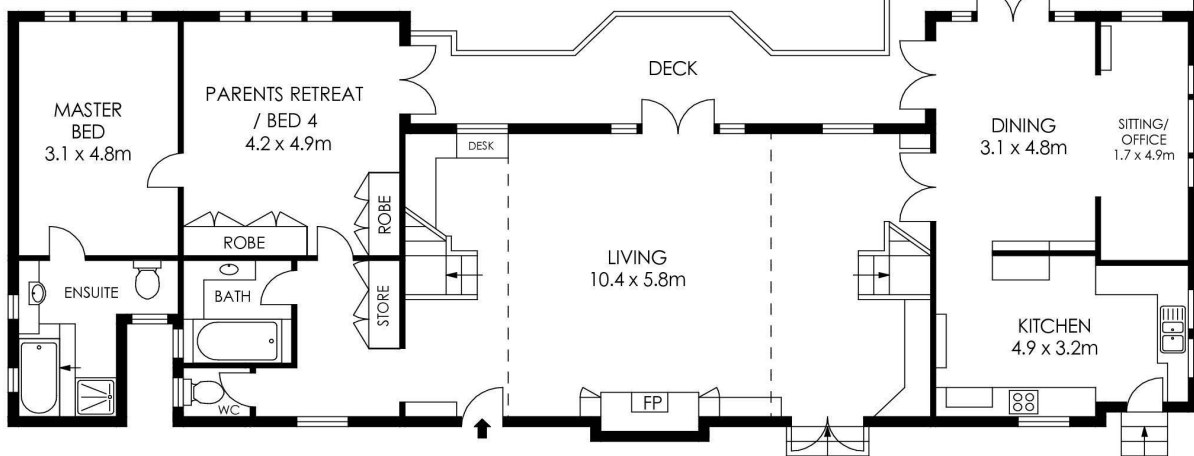
LJ Hooker Avalon Beach
(02) 9973 2999



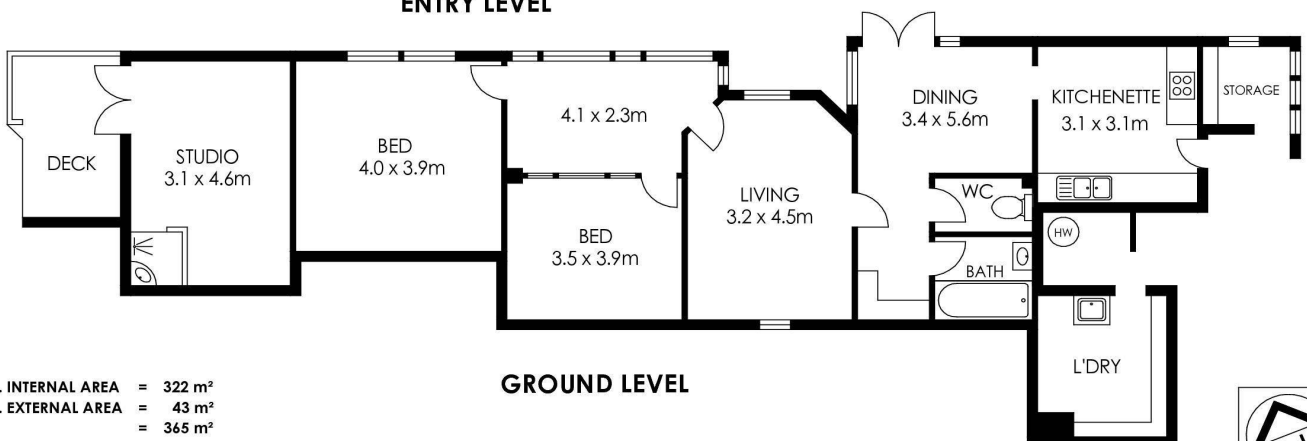
UPPER LEVEL



UPPER LEVEL



ENTRY LEVEL



GROUND LEVEL

APPROX. INTERNAL AREA = 322 m²
 APPROX. EXTERNAL AREA = 43 m²
 TOTAL = 365 m²
 LAND SIZE = 1530 m²

PLANS SHOWN ONLY INDICATIVE OF LAYOUT. DIMENSIONS ARE APPROXIMATE.

26 Plateau Road, Avalon Beach

LJ Hooker

LJ Hooker

LJ Hooker Avalon Beach
 (02) 9973 2999

Disclaimer: All information contained therein is gathered from relevant third parties sources.
 We cannot guarantee or give any warranty about the information provided. Interested parties must rely solely on their own enquiries.