
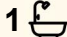





25 Palmgrove Road, Avalon Beach

3  1  2 

Unlock Potential: 3-Bedroom Coastal Home in a Prime Avalon Location

Nestled in a peaceful enclave of Avalon, this delightful 3-bedroom home captures the essence of coastal living with picturesque views of Avalon Beach. Designed for relaxation and connection with nature, the home features a large verandah-perfect for soaking in the ocean breeze, entertaining guests, or simply enjoying your morning coffee with a stunning outlook.

Surrounded by a whimsical garden, the property offers a serene escape, with lush greenery and meandering paths that create a sense of wonder and tranquillity. Inside, the home exudes warmth and charm, with light-filled spaces that embrace the coastal atmosphere.

This is an exciting opportunity to create the lifestyle you and your family have always envisioned, perfectly balancing tranquillity and convenience in one of Avalon's most sought-after locations.

Disclaimer:

All information provided, including but not limited to the property description, price, and address, has been supplied to LJ Hooker

FOR SALE
Contact Agent

AGENTS

Olivia Broomhead
0418 463 615
olivia.broomhead@ljhavalon.com.au

AGENCY

LJ Hooker Avalon Beach
(02) 9973 2999

Avalon Beach by third parties. While we believe this information to be reliable, we do not guarantee its accuracy. Interested parties should conduct their own due diligence and seek independent advice regarding any property or information on this website.

MORE DETAILS

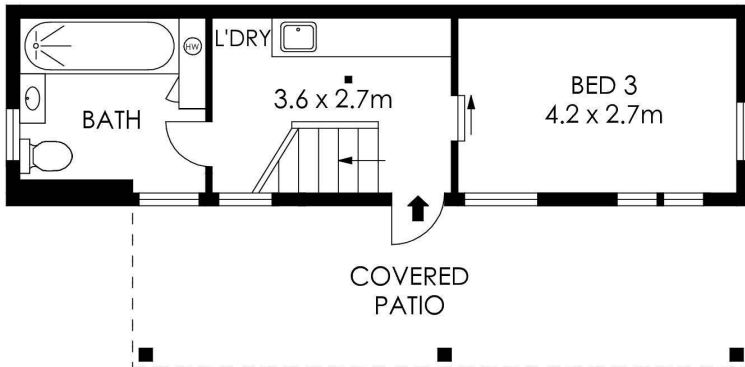
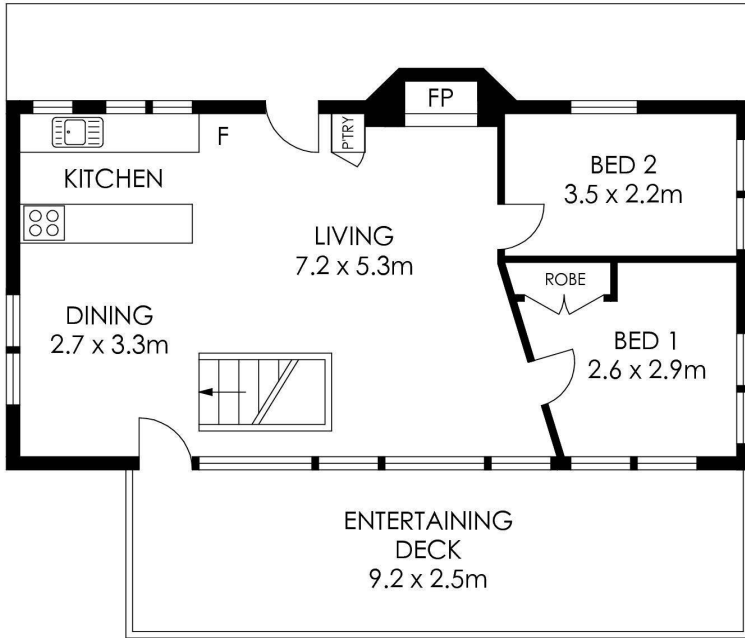
| | |
|---------------|----------|
| Property ID | WFEF58 |
| Property Type | House |
| Land Area | 682.9 m2 |

Olivia Broomhead 0418 463 615

Licensed Real Estate Agent | olivia.broomhead@ljhavalon.com.au

LJ Hooker Avalon Beach (02) 9973 2999

64 Old Barrenjoey Road, AVALON BEACH NSW 2107
avalonbeach.ljhooker.com.au | avalonbeach@ljhooker.com.au



APPROX. INTERNAL AREA = 87 m²
 APPROX. EXTERNAL AREA = 62 m²
 TOTAL = 149 m²
 LAND SIZE = 682.9 m²



PLANS SHOWN ONLY INDICATIVE OF LAYOUT. DIMENSIONS ARE APPROXIMATE.

25 Palmgrove Road, Avalon Beach



All information contained therein is gathered from relevant third parties sources.
 We cannot guarantee or give any warranty about the information provided.
 Interested parties must rely solely on their own enquiries.

