


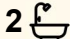



150 Cabarita Road, Avalon Beach

## The View That Launched a Thousand Ships - Incredible Northerly Outlook from a Super Cool Home

Gazing north across the waterfront from Careel Bay to Palm Beach, this Pittwater retreat delivers views that launched a thousand ships; it's a world-class vista in one of Avalon's most desirable coastal pockets. Exceptionally well-designed for those who love to entertain, there's a timeless sense of style throughout the home that's unmistakable; the sweeping layout opens entirely to massive decks on sunny days, while the protected position and north aspect keep it comfortable all year-round. Complete with a fully self contained lower level and great off street parking.

The contemporary architectural lines and generously-scaled floorplan create a clean canvas for your own personal tastes; white-themed interiors are framed by stacker doors to the decks and blanketed by the polished warmth of Tasman Oak floors, with an impressive fireplace as the focal point. The main floor is fully devoted to living and entertaining with a second lounge, deck and four bedrooms on the lower level; the primary suite opens to the deck and includes a large walk-in robe and ensuite. The third level is separately accessed and is

4  2  3 

**FOR SALE**

\$2.95m

**VIEW**

Sat 23rd May @ 10:00AM - 10:30AM

**AGENTS**

Peter Robinson  
0401 219 077  
peter.robinson@ljhooker.com.au

Angus Abrahams  
0488 007 236  
angus.abrahams@ljhooker.com.au

**AGENCY**

LJ Hooker Avalon Beach  
(02) 9973 2999

All information contained therein is gathered from relevant third parties sources.  
We cannot guarantee or give any warranty about the information provided.  
Interested parties must rely solely on their own enquiries.

 **LJ Hooker**

a full self contained studio apartment. Parking and storage are also well-covered with two carports, garage and ample driveway space, with lock-up storage areas under the carport. There's good scope to further capitalise on a prime Pittwater location, moving it from striking to fabulous with a few modest updates.

- Phenomenal coastline views from Careel Bay to Palm Beach and beyond
- Light-drenched northerly aspect, well-protected from harsh southerlies
- Scale and dimension with a beautifully proportioned, open plan design
- Superb entertainer with expansive, water-facing decks on both levels
- Immaculate kitchen and bathrooms; guest powder room on main floor
- 2nd living area on bedroom level; primary suite with deck, walk-in robe
- 3rd floor is a fully self contained studio apartment with kitchen and bathroom
- Tasman Oak floors, gas fireplace, ducted air, two carports + garage
- Ample lock-up storage space plus plenty of driveway parking spots
- Scope to further capitalise on a dress-circle setting with minor upgrades
- Less than 150m to Careel Bay Marina and mere moments into Avalon

#### Disclaimer:

All information provided, including but not limited to the property description, price, and address, has been supplied to LJ Hooker Avalon Beach by third parties. While we believe this information to be reliable, we do not guarantee its accuracy. Interested parties should conduct their own due diligence and seek independent advice regarding any property or information on this website.

## MORE DETAILS

Property ID	WYCF58
Property Type	House
Land Area	695 m2

### Peter Robinson 0401 219 077

Independent Contractor | Peter Robinson Real Estate Pty Ltd CLN  
10121506 | peter.robinson@ljhooker.com.au

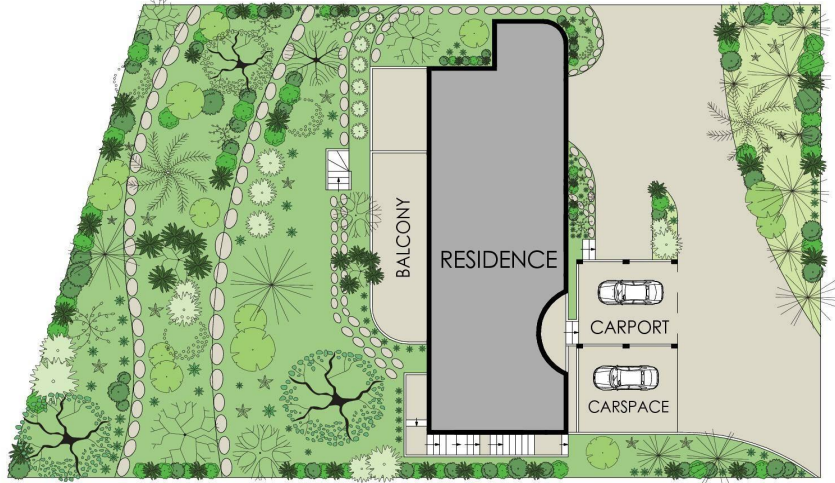
### Angus Abrahams 0488 007 236

Licensed Real Estate Agent | angus.abrahams@ljhooker.com.au

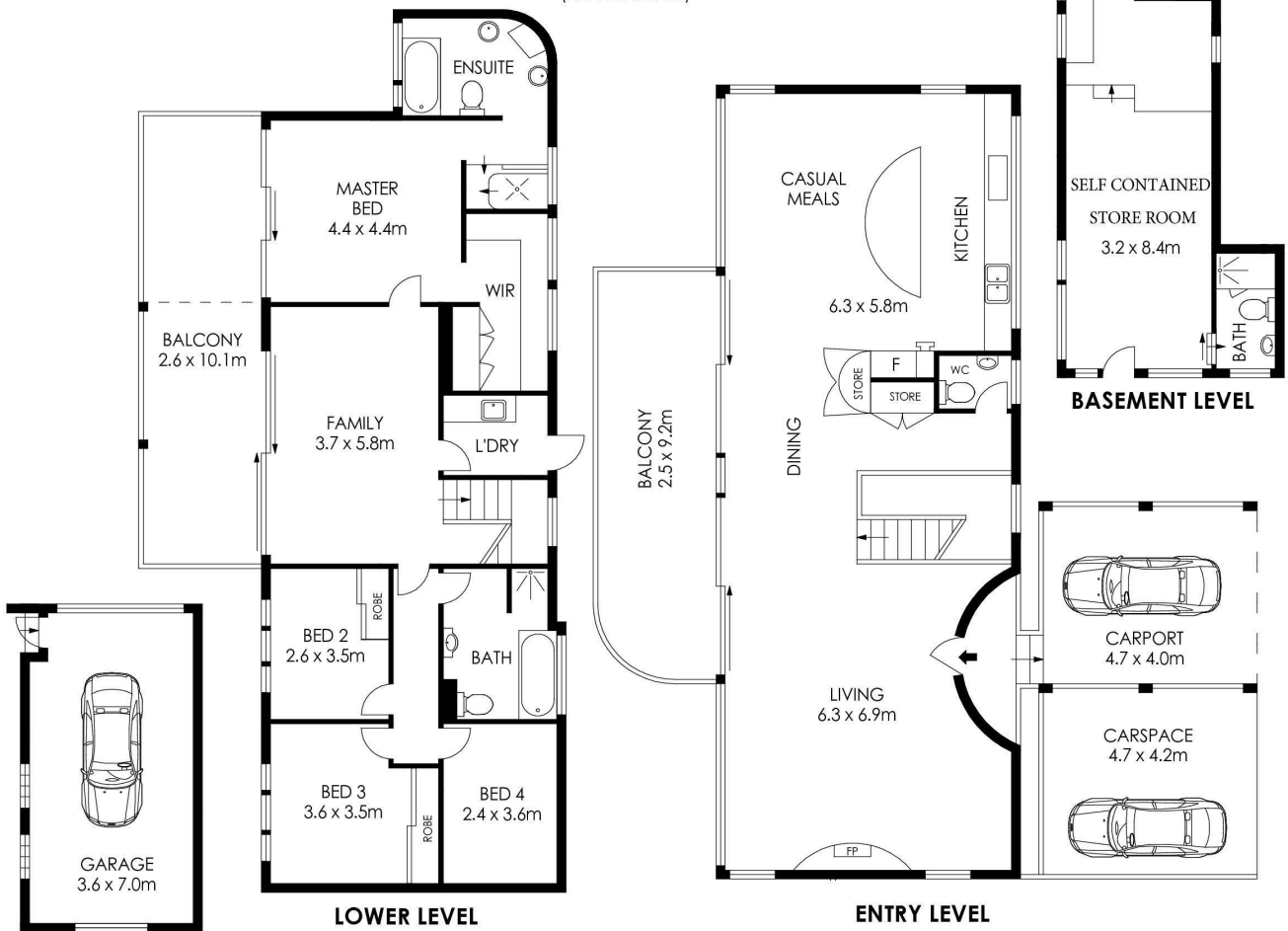
### LJ Hooker Avalon Beach (02) 9973 2999

64 Old Barrenjoey Road, AVALON BEACH NSW 2107  
avalonbeach.ljhooker.com.au | avalonbeach@ljhooker.com.au





**SITE PLAN**  
(NOT TO SCALE)



APPROX. INTERNAL AREA = 263 m<sup>2</sup>  
 APPROX. EXTERNAL AREA = 114 m<sup>2</sup>  
 TOTAL = 377 m<sup>2</sup>  
 LAND SIZE = 695.6 m<sup>2</sup>

PLANS SHOWN ONLY INDICATIVE OF LAYOUT. DIMENSIONS ARE APPROXIMATE.



# 150 Cabarita Road, Avalon Beach



All information contained therein is gathered from relevant third parties sources.  
 We cannot guarantee or give any warranty about the information provided.  
 Interested parties must rely solely on their own enquiries.

