



## Avalon Beach, 133 Cabarita Road

Idyllic Pittwater retreat; perfect year-rounder or holiday home

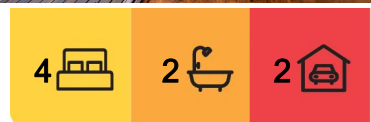
Basking in panoramic Pittwater views, this delightful home has the added bonus of an easy level entrance off of Wanawong Road from its 695sqm low maintenance block. The pristine, split level layout feels as though it was designed for relaxed entertaining; bifolds slip back to connect the crisp, white interiors with full-length decks gazing across the waterfront; abundant sunshine is delivered throughout the day with a prized northerly aspect.

Its immaculate layout is airy and open with sky-high ceilings and timber floors; the kitchen is finished with gleaming hardwood benchtops, Smeg appliances and a servery out to the deck. Four bedrooms, three feature built-in robes and ceiling fans, while the king-sized master suite includes deck access and those iconic Pittwater views.

An idyllic year-round retreat, it's a great choice for downsizers who want the extra space for



**Disclaimer:** All information contained therein is gathered from relevant third parties sources. We cannot guarantee or give any warranty about the information provided. Interested parties must rely solely on their own enquiries.



**For Sale**  
Contact Agent

**View**  
[ljhooker.com.au/VQ7F58](https://ljhooker.com.au/VQ7F58)

**Contact**  
**Thomas Mackay**  
0429 236 879  
[tom.mackay@ljhooker.com.au](mailto:tom.mackay@ljhooker.com.au)  
**Jonothan Gosselin**  
0488 011 870  
[jono.gosselin@ljhooker.com.au](mailto:jono.gosselin@ljhooker.com.au)

**LJ Hooker Avalon Beach**  
(02) 9973 2999



entertaining and extended family stays; it's also a fabulous weekendender, offering lock up-and-leave convenience and privacy in one of Pittwater's most exclusive pockets.

- Fabulous north views over Pittwater extend from Careel Bay to Palm Beach
- 695sqm parcel; private level drive with its entrance off Wanawong Road
- Pristine interiors combined with the ease of a generous, split-level layout
- Indoor/outdoor lifestyle with bifolds to expansive entertaining decks
- Kitchen with Smeg cooktop/oven, hardwood benches, servery to deck
- Bedrooms with built-ins, ceiling fans; master suite opens to the deck
- Beautiful gardens at entry level boast mature Frangipani and Wisteria
- Garage with internal access, offstreet parking, moments to the village

For Inspections please enter from Wanawong Road

Disclaimer:

All information provided, including but not limited to the property description, price, and address, has been supplied to LJ Hooker Avalon Beach by third parties. While we believe this information to be reliable, we do not guarantee its accuracy. Interested parties should conduct their own due diligence and seek independent advice regarding any property or information on this website.

More About this Property

Property ID	VQ7F58
Property Type	House
Land Area	695 m²

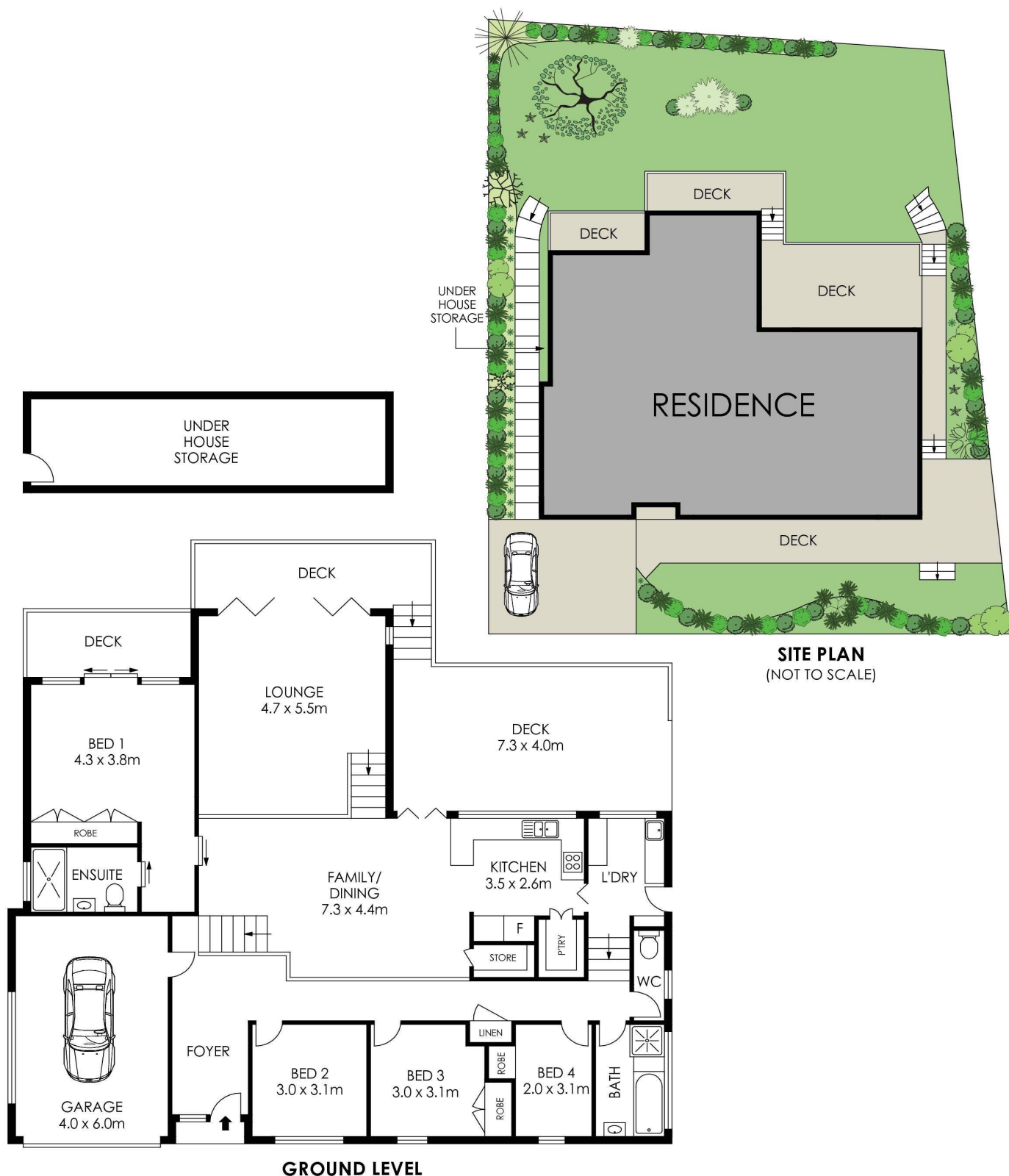
**Thomas Mackay 0429 236 879**  
Principal | Licensee in Charge | tom.mackay@ljhooker.com.au  
**Jonothan Gosselin 0488 011 870**  
Licensed Real Estate Agent | jono.gosselin@ljhooker.com.au

**LJ Hooker Avalon Beach (02) 9973 2999**  
64 Old Barrenjoey Road, AVALON BEACH NSW 2107  
avalonbeach.ljhooker.com.au | avalonbeach@ljhooker.com.au



**Disclaimer:** All information contained therein is gathered from relevant third parties sources. We cannot guarantee or give any warranty about the information provided. Interested parties must rely solely on their own enquiries.

**LJ Hooker Avalon Beach**  
**(02) 9973 2999**



APPROX. INTERNAL AREA = 213 m<sup>2</sup>  
 APPROX. EXTERNAL AREA = 50 m<sup>2</sup>  
 TOTAL = 263 m<sup>2</sup>  
 APPROX. LAND SIZE = 695 m<sup>2</sup>

PLANS SHOWN ONLY INDICATIVE OF LAYOUT. DIMENSIONS ARE APPROXIMATE.



**133 Cabarita Road, Avalon Beach**

**LJ Hooker**

**LJ Hooker**

**LJ Hooker Avalon Beach**  
 (02) 9973 2999

**Disclaimer:** All information contained therein is gathered from relevant third parties sources. We cannot guarantee or give any warranty about the information provided. Interested parties must rely solely on their own enquiries.