

## Australind, 87 Burleigh Drive

### Beautifully Updated 4-Bedroom Family Home in Kingston

Nestled in the heart of Kingston, this beautifully designed 4-bedroom, 2-bathroom home sits on a generous 751m<sup>2</sup> block, offering the perfect blend of comfort, style, and practicality. Thoughtfully updated with brand-new flooring throughout, including stunning large vinyl tiles, this home is move-in ready for families seeking space and modern convenience.

At the heart of the home, the designer kitchen is a standout feature, boasting all-new appliances, a spacious corner pantry, and sleek finishes-ideal for those who love to cook and entertain. Multiple living areas, including an activity room, provide plenty of space for the whole family to enjoy.

The spacious master suite is a private retreat, complete with his and hers walk-in robes, a double vanity, and a large shower. All additional bedrooms include built-in robes for added convenience. Thoughtful upgrades such as solar panels and tinted front windows enhance

4 2 2

#### For Sale

Offers Over \$749,000

#### View

[ljhooker.com.au/17BNHND](http://ljhooker.com.au/17BNHND)

#### Contact

##### Rebecca Maskell

0437 085 992

[rebecca.maskell@ljhsouthwest.com.au](mailto:rebecca.maskell@ljhsouthwest.com.au)

##### Daniel White

0429 086 856

[daniel.white@ljhsouthwest.com.au](mailto:daniel.white@ljhsouthwest.com.au)



**Disclaimer:** All information contained therein is gathered from relevant third parties sources. We cannot guarantee or give any warranty about the information provided. Interested parties must rely solely on their own enquiries.

**LJ Hooker Property South West WA**  
(08) 9791 6880

energy efficiency, while reverse-cycle air conditioning ensures year-round comfort.

#### Features Include:

- 4 bedrooms, 2 bathrooms
- Open-plan living with multiple living areas, including an activity room
- Brand-new designer kitchen with all new appliances and a spacious corner pantry
- Expansive rear patio spanning the full length of the home, complete with a pull-down blind for privacy
- Fully reticulated gardens plus raised vegetable beds for homegrown produce
- Shed (approx. 5.2m x 4.5m) and extensive concrete work around the home
- Two clotheslines, recent soakwell additions, and ample storage options
- Double lock-up garage with a convenient shoppers' entrance

Located in the popular Kingston Estate, this home is just moments from Kingston Primary School, Mercy College, and the Leschenault Leisure Centre, with Treendale Shopping Centre and the Treendale Farm Hotel only a short drive away.

Don't miss this opportunity to secure a stylish and spacious family home in an unbeatable location. Enquire today!

Disclaimer: Whilst every care has been taken in the preparation of this advertisement and the approximate outgoings, all information supplied by the seller and the seller's agent is provided in good faith. Prospective purchasers are encouraged to make their own enquiries to satisfy themselves on all pertinent matters. Images are for illustrative purposes.

## More About this Property

Property ID	17BNHND
Property Type	House
House Size	221 m2
Land Area	751 m2

#### Rebecca Maskell 0437 085 992

Sales Consultant | [rebecca.maskell@ljhsouthwest.com.au](mailto:rebecca.maskell@ljhsouthwest.com.au)

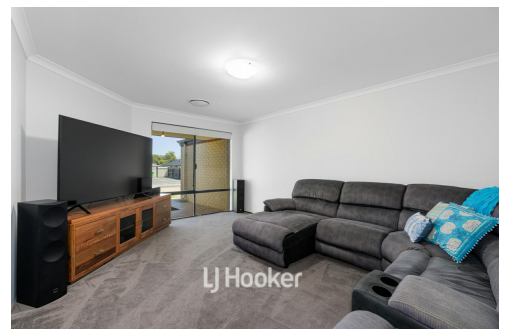
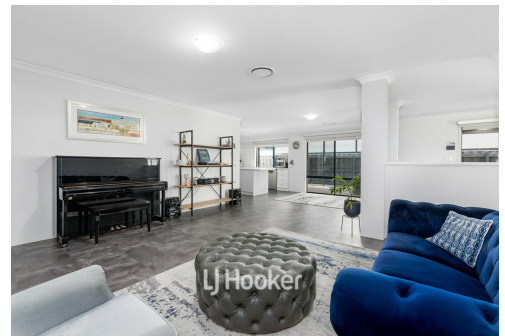
#### Daniel White 0429 086 856

Sales Consultant | [daniel.white@ljhsouthwest.com.au](mailto:daniel.white@ljhsouthwest.com.au)

#### LJ Hooker Property South West WA (08) 9791 6880

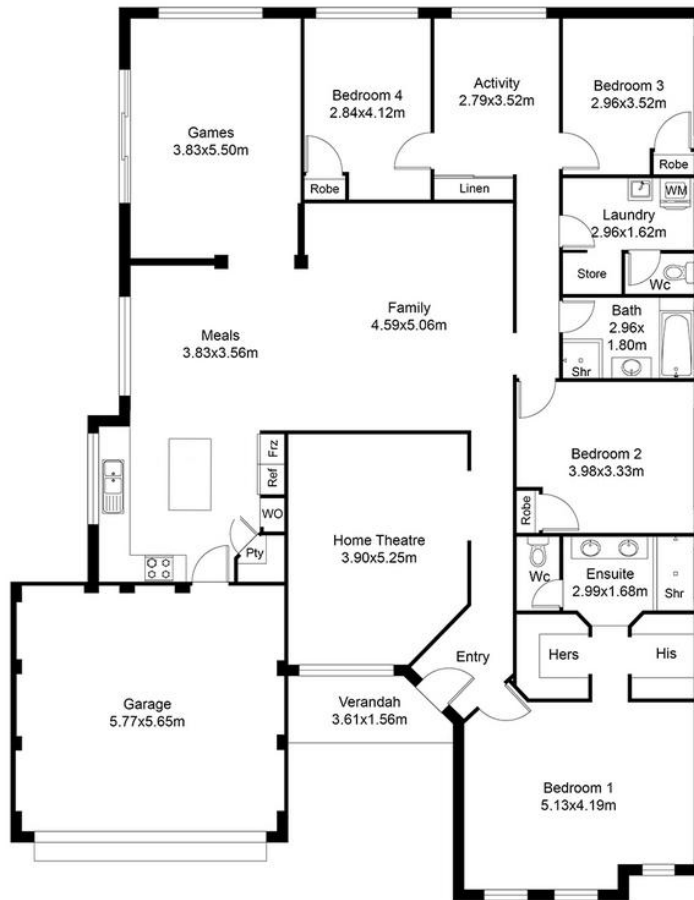
130 Victoria Street, BUNBURY WA 6230

[southwestwa.ljhooker.com.au](http://southwestwa.ljhooker.com.au) | [bunbury@ljhsouthwest.com.au](mailto:bunbury@ljhsouthwest.com.au)



**Disclaimer:** All information contained therein is gathered from relevant third parties sources. We cannot guarantee or give any warranty about the information provided. Interested parties must rely solely on their own enquiries.

**LJ Hooker Property South West WA**  
**(08) 9791 6880**



Please note this floor plan is for marketing purposes and is to be used as a guide only. Measurements are approximate and are for illustrative purposes only.