



## Australind, 25 Walingale Drive

Family Home on Corner Block!



Buyers by appointment only.

Register to view <https://prop.ps/l/CV1TF8mzrpK7>

This property is currently tenanted until 23/04/2025 @\$580 per week.

This large 4x2 home sits on a corner block in a off road to the Leschenault Leisure Centre, a prime location for families with schools and sports all a walking distance away.

The home has 218sm2 of living with a front formal lounge / theatre and a very generous open plan living that embraces the kitchen and dining area.

The master bedroom is front of house with a floor to ceiling built in robe with shelves.

**For Sale**

Offers Over \$599,000

**View**

[ljhooker.com.au/163JHND](http://ljhooker.com.au/163JHND)

**Contact**

**Rachel Ned MacLeod-Paterson**

0488 556 452

[rachel.ned@ljhsouthwest.com.au](mailto:rachel.ned@ljhsouthwest.com.au)



**LJ Hooker Property South West WA**  
**(08) 9791 6880**

**Disclaimer:** All information contained therein is gathered from relevant third parties sources. We cannot guarantee or give any warranty about the information provided. Interested parties must rely solely on their own enquiries.

The ensuite has a large shower, big vanity and toilet.

The kitchen features 900ml Stainless steel oven and 5 burner cooktop surrounded by lots of bench space and a breakfast bar.

Shoppers entrance from the garage to the kitchen makes for convenience.

There are 3 more great sized bedrooms all with built in robes.

Second bathroom has a separate shower and Bath .

The living room has a large split reverse cycle air-conditioner and big window bringing in lots of natural light.

Outside you have a double lock up garage with rear access through the back of the garage roller door.

Large gabled patio for entertaining and a box shed for storage.

Being a corner block there is space for a larger shed an bigger side access from Euro Brace.

Register in Propps to view the home with Ned LJ Hooker

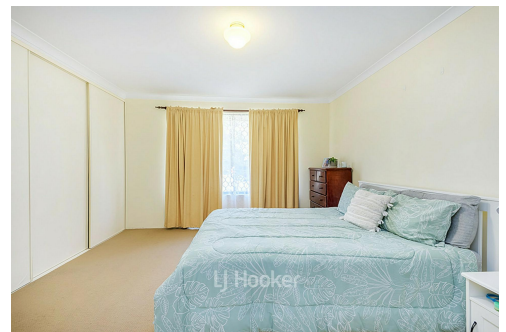
Disclaimer —whilst every care has been taken in the preparation of this advertisement and the approximate outgoings, all information supplied by the seller and the sellers agent is provided in good faith. Prospective purchasers are encouraged to make their own enquiries to satisfy themselves on all pertinent matters. Images are for illustrative purposes.

## More About this Property

<b>Property ID</b>	163JHND
<b>Property Type</b>	House
<b>House Size</b>	218 m <sup>2</sup>
<b>Land Area</b>	601 m <sup>2</sup>
<b>Including</b>	Toilets (2)

**Rachel Ned MacLeod-Paterson 0488 556 452**  
Sales Consultant | [rachel.ned@ljhsouthwest.com.au](mailto:rachel.ned@ljhsouthwest.com.au)

**LJ Hooker Property South West WA (08) 9791 6880**  
130 Victoria Street, BUNBURY WA 6230  
[southwestwa.ljhooker.com.au](http://southwestwa.ljhooker.com.au) | [bunbury@ljhsouthwest.com.au](mailto:bunbury@ljhsouthwest.com.au)



**Disclaimer:** All information contained therein is gathered from relevant third parties sources. We cannot guarantee or give any warranty about the information provided. Interested parties must rely solely on their own enquiries.

**LJ Hooker Property South West WA  
(08) 9791 6880**