

Australind, 13 Wickham Way

Clifton Park Hidden Gem

4 2 2

For Sale

Offers Over \$619,000

View

ljhooker.com.au/15PCHND

Contact

Rebecca Maskell

0437 085 992

rebecca.maskell@ljhsouthwest.com.au

Daniel White

0429 086 856

daniel.white@ljhsouthwest.com.au

Set in this lovely quiet location this beautifully renovated four-bedroom, two-bathroom home is waiting to welcome you with open arms. Offering an abundance of space and comfort, this residence boasts three living areas, including a generously sized family room with direct access to the patio.

Step outside to your own private retreat, where a spacious patio awaits, adorned with an insulated roof and outdoor blinds, creating the perfect setting for year-round relaxation. Indulge in luxury with a stunning 6 x 3 below-ground pool, complemented by glass pool fencing.

Other Features include:

- Master bedroom featuring new carpet & ceiling fan
- Newly renovated main bathroom, toilet and ensuite
- Updated kitchen with new bench tops, European appliances-cook top, oven and



Disclaimer: All information contained therein is gathered from relevant third parties sources.

We cannot guarantee or give any warranty about the information provided. Interested parties must rely solely on their own enquiries.

LJ Hooker Property South West WA
(08) 9791 6880

dishwasher, splash back, and large pantry

- Reverse cycle ducted heating and cooling throughout the entire home
- Easy care floor coverings throughout living areas
- New curtains, roller blinds and light fittings throughout
- Updated laundry
- Plenty of cupboard space
- New pool cover and Dolphin robot cleaner
- Double lock up garage plus single carport to the other side
- Secure lock up backyard
- Two garden sheds
- Large reticulated front lawn
- 6.5kw solar panel system
- Conveniently located near Clifton Park Primary School and Bunbury Golf Club
- Public walk path next door for easy access to the river

For more information about this exceptional property, feel free to contact your dedicated agent, Rebecca, today.

More About this Property

Property ID	15PCHND
Property Type	House
Land Area	809 m ²

Rebecca Maskell 0437 085 992

Sales Consultant | rebecca.maskell@ljhsouthwest.com.au

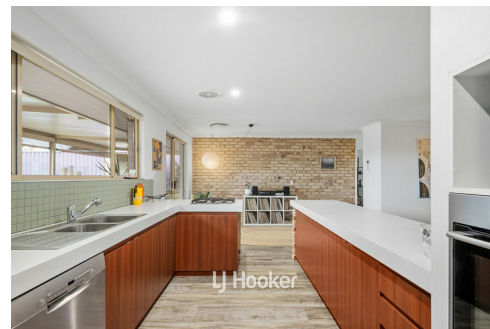
Daniel White 0429 086 856

Sales Consultant | daniel.white@ljhsouthwest.com.au

LJ Hooker Property South West WA (08) 9791 6880

130 Victoria Street, BUNBURY WA 6230

southwestwa.ljhooker.com.au | bunbury@ljhsouthwest.com.au



Disclaimer: All information contained therein is gathered from relevant third parties sources. We cannot guarantee or give any warranty about the information provided. Interested parties must rely solely on their own enquiries.

**LJ Hooker Property South West WA
(08) 9791 6880**



Disclaimer: Floor Plan measurements are approximate and are for illustrative purposes only. While we do not doubt the floor plans accuracy, we make no guarantee, warranty or representation as to the accuracy and completeness of the floor plan.