

Austral, 39 Dapple Street

Serene Opulence | Display Home

Step into effortless sophistication with this as new 37sq home, expertly built by award-winning Logico Homes. Showcasing the highest level of craftsmanship, this Hamptons inspired residence offers a harmonious blend of style, functionality, and comfort, perfect for the modern family.

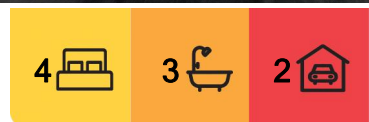
Immersed in natural light and brimming with designer touches, every detail of this home speaks of luxury. From the handcrafted finishes to the thoughtful layout, you'll feel the difference the moment you walk in.

Property Highlights:

- Gourmet award-winning kitchen with 40mm stone benchtops, 2x stainless steel ovens with 600mm gas cooktops, farmers sink, integrated fridge and freezer, oversized walk-in pantry, microwave, soft-close drawers and cupboards, integrated dishwasher plus abundant storage, brass hardware and natural lighting throughout



Disclaimer: All information contained therein is gathered from relevant third parties sources. We cannot guarantee or give any warranty about the information provided. Interested parties must rely solely on their own enquiries.



For Sale
Expressions of Interest

View
By Appointment

Contact
Chelsea Mifsud
0429 628 005
cmifsud.leppington@ljhooker.com.au
Samuel Moscabenny
smoscabenny.leppington@ljhooker.com.au

LJ Hooker Leppington | Austral
(02) 9606 4311

- Elegant bathrooms with frameless shower screens, stone-topped his & hers vanities, full sized wall niche, wall hung toilet, decorative fittings, and a free-standing bathtub
- Spacious open-plan lounge and dining area with fireplace leading to a generous alfresco entertaining space with corner triple stacker doors for the perfect indoor-outdoor experience.
- Master bedroom with large ensuite and walk-in robe: three additional bedrooms with spacious walk-in robes, plus an office or potential 4th bedroom downstairs
- Oversized upstairs entertaining/living area perfect for the family to enjoy
- Second office downstairs and separate living room with sliding doors for privacy
- Additional features include handcrafted timber detailing to staircase, entry mud nook, cabinetry to laundry, carpeted bedrooms, curtains, ducted air-conditioning, plantation shutters, security cameras and fully landscaped

Set within a vibrant, fast-growing community, this impressive home is just moments from schools, shopping, parklands, and major transport links—offering a convenient lifestyle without compromising on quality or comfort.

Luxury homes of this calibre are a rare find. Move in and enjoy the ultimate blend of comfort, class, and convenience.

Book your inspection today.

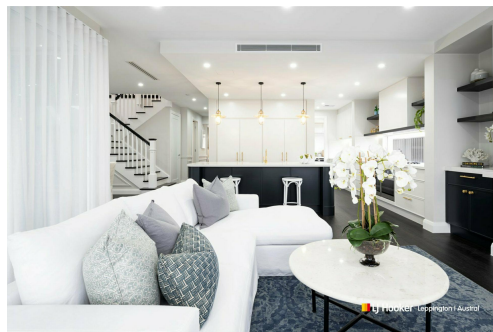
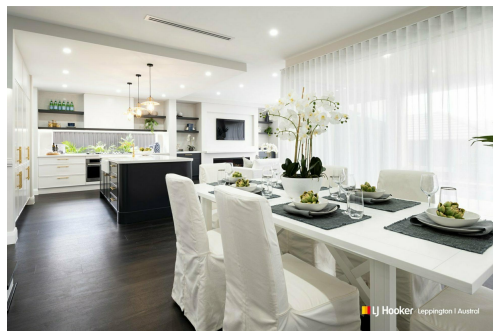
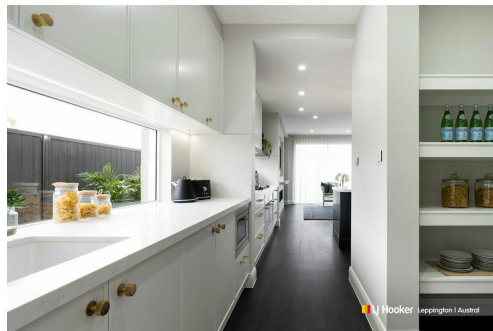
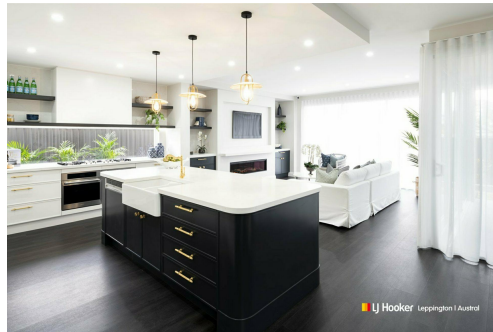
Disclaimer: The above information has been furnished to LJ Hooker Leppington | Austral by the vendor/vendors legal representative. We have not verified whether or not that information is accurate, and do not have any belief one way or the other in its accuracy. LJ Hooker Leppington | Austral do not accept any responsibility to any person for its accuracy and do no more than pass it on. All interested parties should make and rely upon their own enquiries in order to determine whether or not this information is, in fact, accurate.

More About this Property

Property ID	11SSHCV
Property Type	House

Chelsea Mifsud 0429 628 005
 Licensed Sales Agent | cmifsud.leppington@ljhooker.com.au
Samuel Moscabenny
 Licensed Sales Agent | smoscabenny.leppington@ljhooker.com.au

LJ Hooker Leppington | Austral (02) 9606 4311
 Leppington Village Shopping Centre, Shop GC1, 108-116 Ingleburn Road,
 LEPPINGTON NSW 2179
 leppington.ljhooker.com.au | leppington@ljhooker.com.au



Disclaimer: All information contained therein is gathered from relevant third parties sources. We cannot guarantee or give any warranty about the information provided. Interested parties must rely solely on their own enquiries.

LJ Hooker Leppington | Austral
(02) 9606 4311