

Austral, 36 Lamancha Road

Move In Tomorrow!

This brand-new double-story residence is located in the fast-growing suburb of Austral & has been thoughtfully crafted with families in mind, offering room to for the whole family.

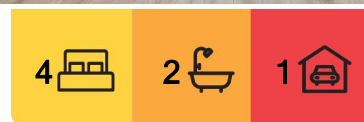
The property offers the following features:

- Beautifully appointed kitchen with stone top benchtops, 900mm stainless steel appliances & enormous walk-in pantry
- Spacious master bedroom complete with a walk-in robe and ensuite.
- Expansive bedrooms each with built-in robes
- Welcoming open plan living and dining area
- Private home office or study area, perfect for working from home
- Tiled alfresco area with a complete outdoor kitchen, perfect for hosting barbecues with family & friends

This property is conveniently located within a short distance from the bustling Austral



Disclaimer: All information contained therein is gathered from relevant third parties sources. We cannot guarantee or give any warranty about the information provided. Interested parties must rely solely on their own enquiries.



For Sale
\$1,200,000

View
Sat 31st May @ 11:00AM - 11:30AM

Contact
Chelsea Mifsud
0429 628 005
cmifsud.leppington@ljhooker.com.au
Samuel Moscabenny
0448 649 817
smoscabenny.leppington@ljhooker.com.au

LJ Hooker Leppington | Austral
(02) 9606 4311

Shopping Centre, numerous schools, Bowling Club, conveniently located to multiple bus stops, and just moments away from Leppington Train Station and Leppington Town Centre.

Opportunities like this don't wait - act fast before it's gone!

Disclaimer: The above information has been furnished to LJ Hooker Leppington | Austral by the vendor/vendors legal representative. We have not verified whether or not that information is accurate, and do not have any belief one way or the other in its accuracy. LJ Hooker Leppington | Austral do not accept any responsibility to any person for its accuracy and do no more than pass it on. All interested parties should make and rely upon their own enquiries in order to determine whether or not this information is, in fact, accurate.

More About this Property

Property ID	11QFHCV
Property Type	House

Chelsea Mifsud 0429 628 005

Licensed Sales Agent | cmifsud.leppington@ljhooker.com.au

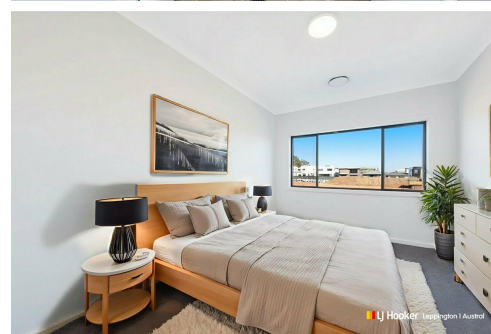
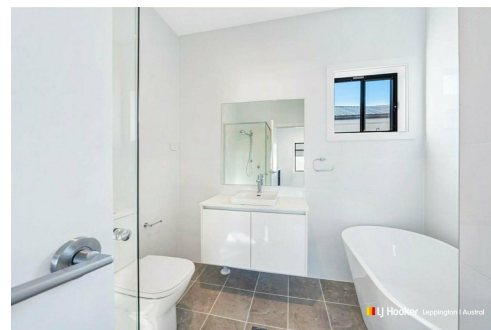
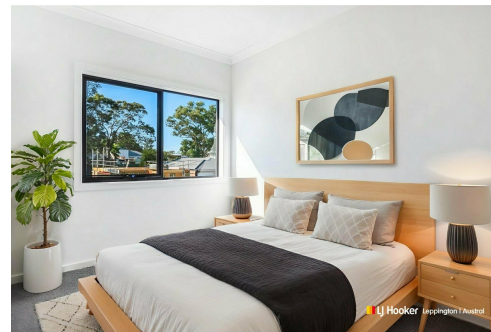
Samuel Moscabenny 0448 649 817

Licensed Sales Agent | smoscabenny.leppington@ljhooker.com.au

LJ Hooker Leppington | Austral (02) 9606 4311

Leppington Village Shopping Centre, Shop GC1, 108-116 Ingleburn Road,
LEPPINGTON NSW 2179

leppington.ljhooker.com.au | leppington@ljhooker.com.au

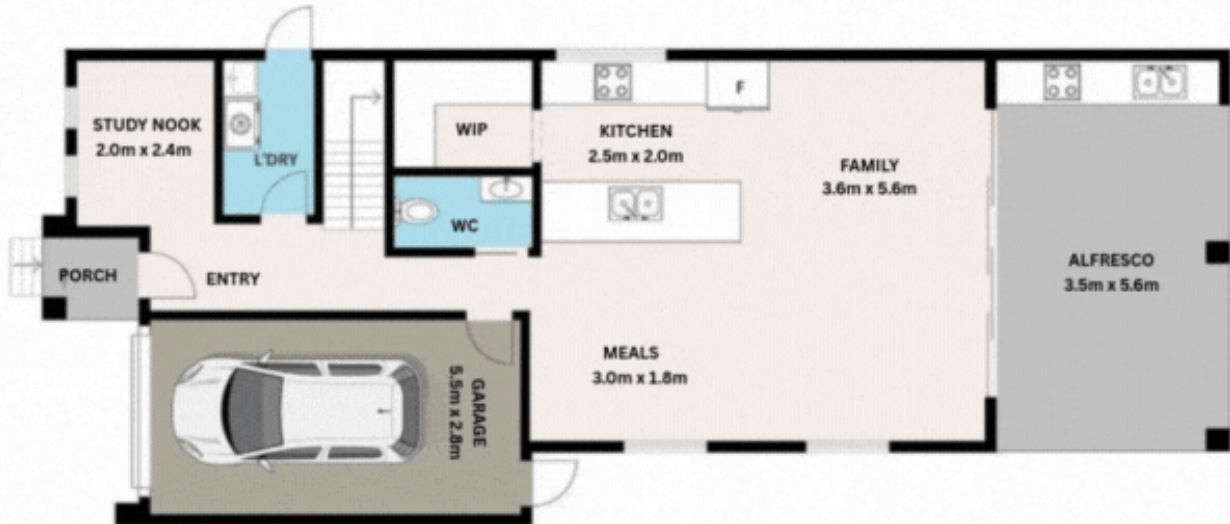


Disclaimer: All information contained therein is gathered from relevant third parties sources. We cannot guarantee or give any warranty about the information provided. Interested parties must rely solely on their own enquiries.

LJ Hooker Leppington | Austral
(02) 9606 4311



FIRST FLOOR



GROUND FLOOR



36 LAMANCHA ROAD, AUSTRAL

DISCLAIMER
THE PLANS SHOWN ARE FOR MARKETING PURPOSES ONLY. ALL DIMENSIONS ARE APPROXIMATE AND NOT TO SCALE. THEY ARE SUBJECT TO ERRORS AND INACCURACIES AND NO LIABILITY WILL BE ACCEPTED. INTERESTED PARTIES SHOULD MAKE THEIR OWN ENQUIRIES.

LJ Hooker
Leppington | Austral