



19 Viola Street, Atherton

Charm | Location | Turn Key

Auction Location: On Site

Unmatched charm and character with amazing views. Looking toward the beautiful Mount Baldy National Park, this inviting home captures breathtaking sunsets across the range each and every evening. Positioned just 1.4km from the heart of Atherton and less than 1km to Jubilee Christian College, the location is perfect for couples, growing families or savvy investors seeking convenience and lifestyle.

From the moment you arrive, the beautiful street appeal, timber fencing and established gardens create a warm welcome. Inside, the home is full of timeless character with polished timber floors, classic casement windows and air-conditioning throughout for year-round comfort. Offering three charming bedrooms, the master includes a built-in robe, while the functional kitchen features gas cooking and quality appliances ready for everyday living.

The spacious outdoor entertaining area is the perfect place to relax or host family and friends, all while enjoying the peaceful surrounds. Set on a generous block, there is excellent vehicle access via the drive-through garage along with additional side access and plenty of room for extra vehicles, trailers or future additions. A garden shed provides valuable storage, and with all the hard work already completed, this is

3 1 1

AUCTION

Mon 8th Jun @ 4:00PM

VIEW

Thu 28th May @ 3:15PM - 3:45PM

AGENTS

Alex Payne
0409 328 153
alex@ljhookerpropertyplus.com

AGENCY

LJ Hooker Atherton
(07) 4091 3144

All information contained therein is gathered from relevant third parties sources. We cannot guarantee or give any warranty about the information provided. Interested parties must rely solely on their own enquiries.

LJ Hooker

a property where you can simply move in and enjoy from day one.

Property Highlights

Stunning sunsets overlooking Mount Baldy National Park

3 charming bedrooms, master with built-in robe

Polished timber floors and casement windows

- conditioned for comfort

Functional kitchen with gas cooking and quality appliances

Spacious outdoor entertaining area

Drive-through garage with additional side access

Large block with room for vehicles, trailers or extras

Garden shed for additional storage

Just 1.4km to Atherton Main Street

Less than 1km to Jubilee Christian College

Homes with this level of charm, character and convenience are becoming hard to find. Don't miss your opportunity to make this yours. Contact Alex Payne today on 0409 328 153.

MORE DETAILS

Property ID	STBF1S
Property Type	House
Land Area	1012 m2
Including	Air Conditioning Deck Dishwasher Outdoor Entertaining Floorboards Built-in-Robes Secure Parking Fully Fenced Liveability

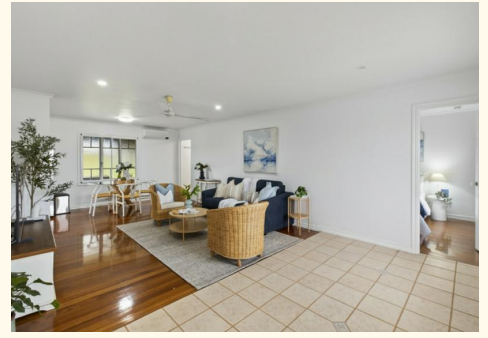
Alex Payne 0409 328 153

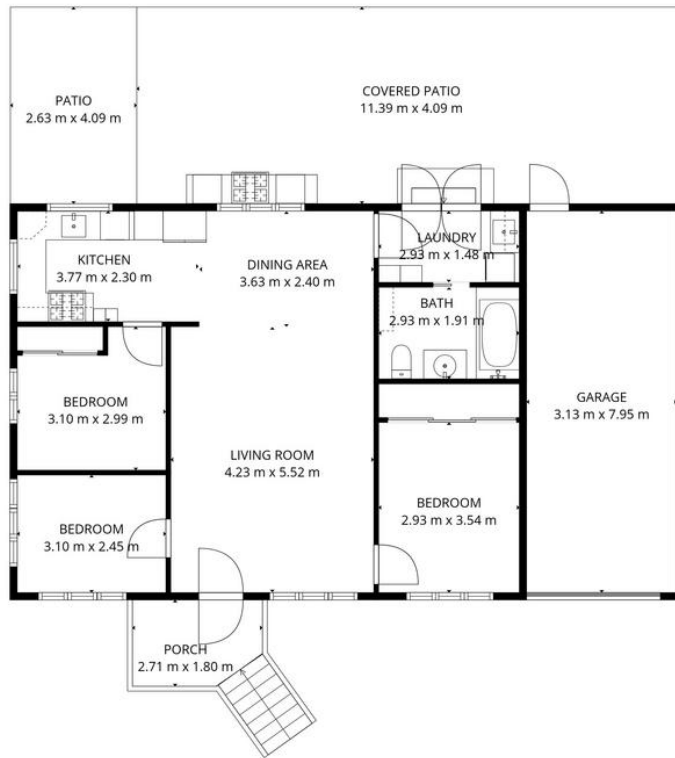
Property Sales Consultant | alex@ljhookerpropertyplus.com

LJ Hooker Atherton (07) 4091 3144

10 Main Street, ATHERTON QLD 4883

atherton.ljhooker.com.au | atherton@ljhatherton.com





TOTAL: 83 m²
 1st floor: 83 m²
 EXCLUDED AREAS: GARAGE: 25 m², PORCH: 5 m², COVERED PATIO: 47 m²,
 PATIO: 11 m², WALLS: 8 m²

FLOOR PLAN CREATED BY CUBICASA APP. MEASUREMENTS DEEMED HIGHLY RELIABLE BUT NOT GUARANTEED.



All information contained therein is gathered from relevant third parties sources.
 We cannot guarantee or give any warranty about the information provided.
 Interested parties must rely solely on their own enquiries.

