



## Atherton, 17-19 Louise Street

Elegance | Sophistication | History

Step into a world of timeless charm and modern luxury with this impeccably presented Queenslander, steeped in history and graced by royalty-Princess Alexandra of Kent visited in 1959.

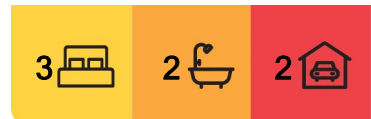
Positioned on a corner block with half an acre of lush gardens, this exceptional residence is home to an enchanting collection of exotic plants and flowers, including orchids, a cinnamon tree, silk handkerchief tree, elephant apple, avocado, lychee, and the magnificent Bombax Ceiba, among many others.

Inside, the home seamlessly blends classic Queenslander character with contemporary comforts. Expansive, light-filled rooms, polished timber floors, and high ceilings.

Highlights include:



**Disclaimer:** All information contained therein is gathered from relevant third parties sources. We cannot guarantee or give any warranty about the information provided. Interested parties must rely solely on their own enquiries.



**For Sale**  
Please Call

**View**  
[ljhooker.com.au/RW3F1S](http://ljhooker.com.au/RW3F1S)

**Contact**  
**Alex Payne**  
0409 328 153  
[alex@ljhatherton.com](mailto:alex@ljhatherton.com)

**LJ Hooker Atherton**  
**(07) 4091 3144**

- Master suite with built-in wardrobe, ensuite, and adjoining office/library
- Guest bedroom featuring its own fireplace as well as private sunroom
- Open-plan living with a spacious kitchen, stone benchtops, additional sink in island bench, ample cabinetry, and gas cooking
- Bifold doors opening up to veranda offering breathtaking views over the township and surrounding mountains
- Renovated main bathroom with walk in shower

This is an exclusive opportunity to own a piece of history, private oasis and entertainers delight.

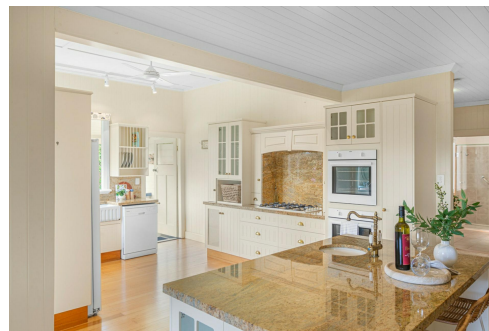
Contact exclusive marketing agent Alex Payne today on 0409 328 153.

## More About this Property

<b>Property ID</b>	RW3F1S
<b>Property Type</b>	House
<b>Land Area</b>	2016 m <sup>2</sup>
<b>Including</b>	Study Courtyard Deck Dishwasher Outdoor Entertaining Floorboards Built-in-Robes Fully Fenced

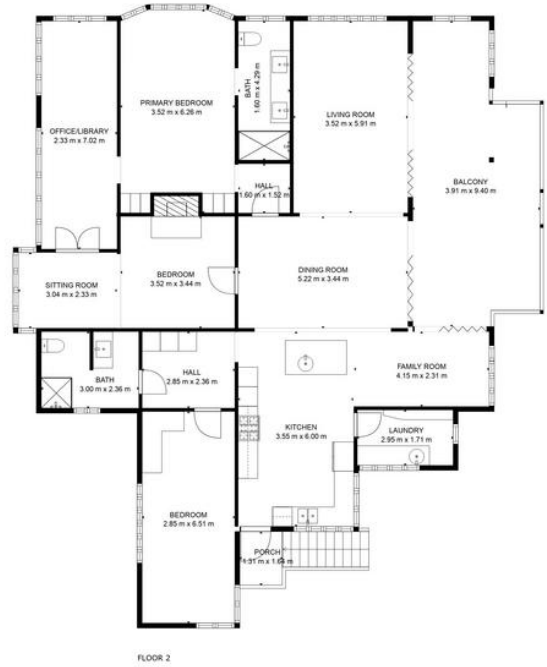
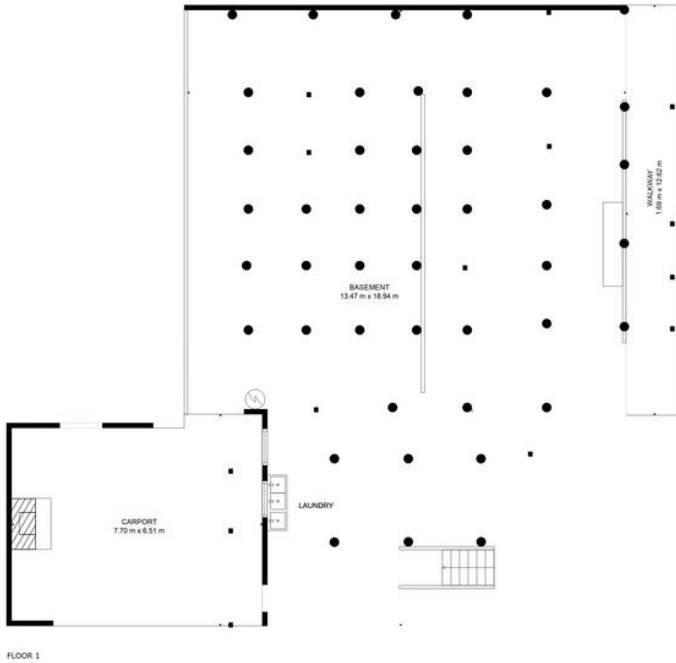
**Alex Payne 0409 328 153**  
Property Sales Consultant | [alex@ljhatherton.com](mailto:alex@ljhatherton.com)

**LJ Hooker Atherton (07) 4091 3144**  
10 Main Street, ATHERTON QLD 4883  
[atherton.ljhooker.com.au](http://atherton.ljhooker.com.au) | [atherton@ljhatherton.com](mailto:atherton@ljhatherton.com)



**LJ Hooker Atherton**  
**(07) 4091 3144**

**Disclaimer:** All information contained therein is gathered from relevant third parties sources. We cannot guarantee or give any warranty about the information provided. Interested parties must rely solely on their own enquiries.



**TOTAL: 401 m<sup>2</sup>**  
 FLOOR 1: 221 m<sup>2</sup>, FLOOR 2: 180 m<sup>2</sup>  
 EXCLUDED AREAS: CARPORT: 48 m<sup>2</sup>, WALKWAY: 21 m<sup>2</sup>, BALCONY: 32 m<sup>2</sup>,  
 PORCH: 2 m<sup>2</sup>

FLOOR PLAN CREATED BY CUBICASA APP. MEASUREMENTS DEEMED HIGHLY RELIABLE BUT NOT GUARANTEED.

