



10 Ophelia Avenue, Atherton

## Sunset Ridge Estate | Near New | Modern Living

Positioned in the sought-after Sunset Ridge Estate and located just over 1 kilometre from Atherton's Main Street, this beautifully presented home offers the perfect combination of modern design, quality finishes, and relaxed family living.

Completed in 2025, this stylish rendered block residence has been thoughtfully designed to maximise space, comfort, and functionality. Boasting four bedrooms, two bathrooms, a double lock-up garage, and a dedicated media room, the home caters effortlessly to growing families and those who love to entertain.

At the heart of the home, the contemporary kitchen features stone benchtops, quality appliances, and ample storage, seamlessly connecting to the open-plan living and dining areas. Raked ceilings create an impressive sense of space and natural light throughout the main living zone.

Step outside to the expansive outdoor entertaining deck, complete with upgraded blinds and shutters, creating a versatile space to enjoy year-round. From here, you'll appreciate the elevated outlook and pleasant views, while the landscaped gardens, established hedges, and flowering plants provide privacy and a welcoming setting.

Set on a generous 884m<sup>2</sup> allotment, this near-new home delivers the convenience of modern living in one of Atherton's most desirable

4  2  2 

### FOR SALE

Offers Over \$950,000

### VIEW

Sat 13th Jun @ 10:30AM - 11:00AM

### AGENTS

Joson Curcio  
0439 948 999  
joson@ljhookerpropertyplus.com

### AGENCY

LJ Hooker Atherton  
(07) 4091 3144

All information contained therein is gathered from relevant third parties sources.  
We cannot guarantee or give any warranty about the information provided.  
Interested parties must rely solely on their own enquiries.

 **LJ Hooker**

residential estates.

Property Features:

- Completed in 2025
- 300m2 Under Roof
- Dedicated media room
- Rendered block construction
- Luxury vinyl plank flooring throughout living areas
- Fully Airconditioned
- Carpeted bedrooms
- Stone benchtop/splashback kitchen
- Open-plan living and dining
- Raked ceilings
- Covered outdoor entertaining deck
- Luxury blinds and shutters to outdoor area
- Landscaped gardens with established hedges and flowering plants
- Elevated outlook with views
- Located in the popular Sunset Ridge Estate
- Just over 1km from Atherton's Main Street

A quality near-new home offering space, style, and a highly convenient location, 10 Ophelia Avenue presents an outstanding opportunity to secure modern living in Atherton.

## MORE DETAILS

Property ID	SVKF1S
Property Type	House
House Size	301 m2
Land Area	884 m2
Including	Air Conditioning Dishwasher Outdoor Entertaining Built-in-Robes Fully Fenced Remote Garage

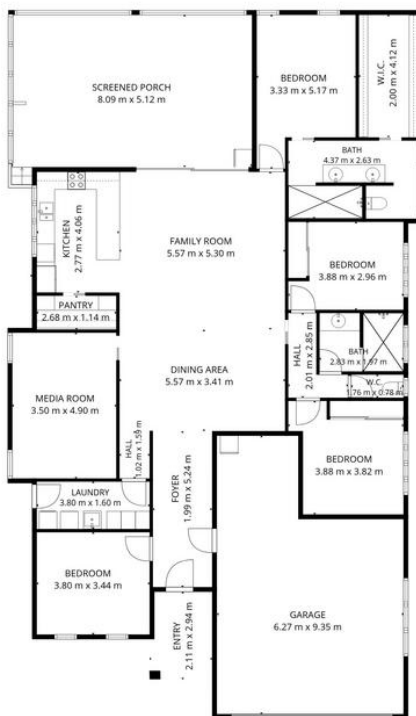
**Joson Curcio 0439 948 999**

Property Sales Consultant | [joson@ljhookerpropertyplus.com](mailto:joson@ljhookerpropertyplus.com)

**LJ Hooker Atherton (07) 4091 3144**

10 Main Street, ATHERTON QLD 4883  
[atherton.ljhooker.com.au](http://atherton.ljhooker.com.au) | [atherton@ljhatherton.com](mailto:atherton@ljhatherton.com)





**TOTAL: 193 m<sup>2</sup>**  
 1st floor: 193 m<sup>2</sup>  
 EXCLUDED AREAS: GARAGE: 49 m<sup>2</sup>, FOOTPATH: 23 m<sup>2</sup>, SCREENED PORCH: 42 m<sup>2</sup>,  
 WALLS: 15 m<sup>2</sup>



FLOOR PLAN CREATED BY CUBICASA APP. MEASUREMENTS DEEMED HIGHLY RELIABLE BUT NOT GUARANTEED.

All information contained therein is gathered from relevant third parties sources.  
 We cannot guarantee or give any warranty about the information provided.  
 Interested parties must rely solely on their own enquiries.

