



Athenree, 55a Steele Road

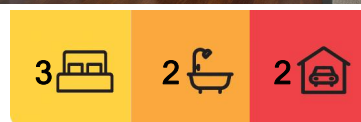
SERIOUS SELLERS ARE MOVING ON

Serious sellers are on the move and now is the time to sell.

If the dream is a lifestyle that is close to stunning Waihi Beach but still has the privacy and space that you are looking for, then look at this one. A home that was built in 2013 and still looking as good as the day it was built.

Situated on 1.7293ha of land, which has a range of options, from grazing a pony to horticulture, or just easy care mown grass. Plenty of space for that pool that may have been on the list. Or even a gardener's delight, plenty to work with here. The bonus to this property is a two-bedroom cottage situated alongside the huge sheds. Plenty of storage space here. The options are many with this property so don't delay, make the call today.

The sellers are ready to go.



For Sale
Price By Negotiation

View
ljhooke.co.nz/CAPGGE

Contact
Sue Lemon AREINZ
0275 891 939
sue.waihibeach@ljhooke.co.nz



Disclaimer: All information contained therein is gathered from relevant third parties sources. We cannot guarantee or give any warranty about the information provided. Interested parties must rely solely on their own enquiries.

LJ Hooker Waihi Beach
(07) 863 5801
Gary Alway Real Estate Limited

More About this Property

Property ID	CAPGGE
Property Type	House
House Size	203 m ²
Land Area	1.7293 hectare
Licensed Real Estate Agents (REAA2008)	

Sue Lemon AREINZ 0275 891 939

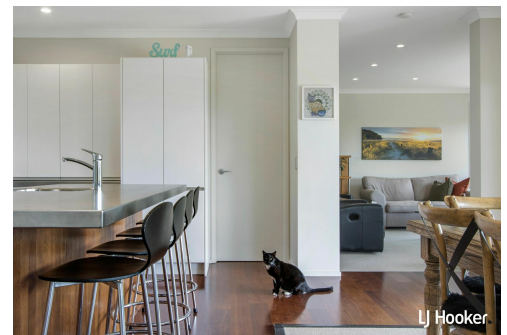
Sales Consultant | sue.waihibeach@ljhooker.co.nz

LJ Hooker Waihi Beach (07) 863 5801

Gary Alway Real Estate Limited

27 Wilson Road, WAIHI BEACH 3611

waihibeach.ljhooker.co.nz | waihibeach@ljhooker.co.nz



Disclaimer: All information contained therein is gathered from relevant third parties sources.

We cannot guarantee or give any warranty about the information provided. Interested parties must rely solely on their own enquiries.

LJ Hooker Waihi Beach

(07) 863 5801

Gary Alway Real Estate Limited