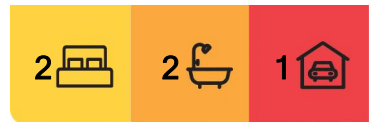


Asquith, 33/325 Peats Ferry Road

SOLD



Set on the second floor of a private security building with a sunny northerly aspect, this stunning and modern two-bedroom apartment offers an ideal family haven of space, privacy, and peace. Located in the heart of Asquith, it's a short walk to Asquith train station and provides easy access to local cafes, shops, schools, parks, and transport, making it a perfect place to call home.

From the moment you enter, you'll notice the well-designed layout with its airy and bright spaces. The open-plan living and dining areas flow onto a private undercover balcony with sweeping district and skyline views from its elevated position—perfect for entertaining. Completed in 2018 to the highest standards, this freshly painted home is ideal as a home or investment. With nothing to do but move in, this is a fantastic opportunity.

Features:

For Sale
SOLD

View
ljhooker.com.au/22SBGRG

Contact
Grant Matterson
0438 261 600
gmatterson@ljhnarrabeen.com.au

Geoff Amaral
0419 251 851
gamaral@ljhnarrabeen.com.au



LJ Hooker Narrabeen
(02) 9913 3300

Disclaimer: All information contained therein is gathered from relevant third parties sources. We cannot guarantee or give any warranty about the information provided. Interested parties must rely solely on their own enquiries.

- Light-filled interior
- Positioned at the quiet Northerly rear of a tightly held security building
- Open-plan living and dining leading to a private North-facing balcony
- Tranquil district and skyline views from the balcony and all bedrooms
- Modern kitchen with gas cooking, range hood, and ample cupboard storage
- LED lights installed throughout, internal laundry
- Two bedrooms with built-in wardrobes; master with ensuite and air conditioning
- Security intercom and lift access, secure parking, plus extra storage
- Walking distance to Asquith railway station, schools, shopping village, KFC, Coles

Supermarket

- In the catchment for St Ives High School, Asquith Boys High School, and Asquith Girls High School, and a short distance to private schools including Barker College, Knox Grammar, Pymble Ladies' College and Abbotsleigh

Location:

- 250m (approx.) to Coles Supermarket
- 300m (approx.) to Asquith Station
- 400m (approx.) to Asquith Bowling & Recreation Club
- 300m (approx.) to Asquith local cafes and eateries
- 400m (approx.) to Asquith Post Office
- 750m (approx.) to Storey Park
- 550m (approx.) to Asquith Boys High School
- 1km (approx.) to Asquith Girls High School
- Close to Hornsby Westfield Shopping Centre

Rental Estimate: \$680.00 - \$700.00 per week (approx.)

Total area on title 113 sqm (approx.)

Quarterly Levies (approx)

- Council - \$370.00
- Water - \$169.03 + usage
- Strata - \$1,443.78

"We have obtained all information in this document from sources we believe to be reliable; however, we cannot guarantee its accuracy. Prospective purchasers are advised to carry out their own investigations."



LJ Hooker Narrabeen
(02) 9913 3300

Disclaimer: All information contained therein is gathered from relevant third parties sources. We cannot guarantee or give any warranty about the information provided. Interested parties must rely solely on their own enquiries.

More About this Property

Property ID	22SBGRG
Property Type	Apartment
Including	Ensuite Air Conditioning Intercom Balcony Dishwasher Built-in-Robes Secure Parking

Grant Matterson 0438 261 600

Diploma of Real Estate, Licensed Real Estate Agent & Accredited Auctioneer |
gmatterson@ljhnarrabeen.com.au

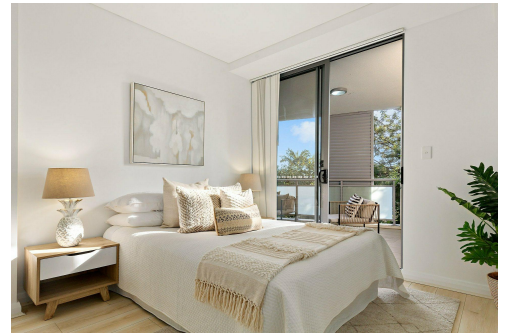
Geoff Amaral 0419 251 851

Principal - Licensed Real Estate Agent | gamaral@ljhnarrabeen.com.au

LJ Hooker Narrabeen (02) 9913 3300

1/1-7 Lagoon Street, NARRABEEN NSW 2101

narrabeen.ljhooker.com.au | narrabeen@ljhnarrabeen.com.au



LJ Hooker



3/325 Peats Ferry Road, Asquith

Produced by DMS&B



LJ Hooker Narrabeen
(02) 9913 3300

Disclaimer: All information contained therein is gathered from relevant third parties sources. We cannot guarantee or give any warranty about the information provided. Interested parties must rely solely on their own enquiries.