



269 Maundrell Terrace, Aspley

3 2 3

Elevated Post-War Home on 746m² with Shed & Endless Possibilities!

FOR SALE
For Sale Now

AGENTS

Amanda Waters
0402 109 955
awaters@ljhooker.com.au

AGENCY

LJ Hooker Aspley | Chermside
(07) 3263 6022

Set on a generous 746m² block with a prized north-east rear aspect, this much-loved post-war home offers an unbeatable opportunity in a highly sought-after pocket on the Aspley/Chermside West border. Whether you're a first-home buyer, savvy investor, or future builder, this is a rare chance to secure a versatile property in one of Brisbane's most tightly held and high-growth locations.

Well-maintained and full of potential, the home is immediately liveable and offers strong rental appeal, while also presenting incredible scope to renovate, extend, or rebuild to create your dream home. With high ceilings, hardwood floors (currently under carpet), and an abundance of natural light throughout, the home radiates charm and promise. The spacious floorplan includes three large bedrooms, bright living and dining areas, and a neat original kitchen and bathroom. Downstairs you'll find a second bathroom, laundry, and expansive tiled utility areas —perfect for storage, hobbies, or future conversion. Outside, the huge family-friendly backyard, carport, large shed, and excellent side access make this property even more attractive.

All information contained therein is gathered from relevant third parties sources. We cannot guarantee or give any warranty about the information provided. Interested parties must rely solely on their own enquiries.



Buyers will love the ultra-convenient location, just 12km from the CBD and within walking distance to Aspley State School, Aspley Hypermarket, city express bus stops, and local parks. Prince Charles and St Vincent's Hospitals are just minutes away, and Brisbane Airport is easily accessible. This is a family-friendly and well-connected area with strong capital growth potential.

Highlights:

- " Elevated, tidy post-war home in a premium inner-north location
- " Spacious 746m² block with sought-after north-east rear aspect
- Comfortable and liveable now, with scope to renovate, extend or rebuild
- 3 generous bedrooms (2 with built-ins)
- Light-filled living and dining areas with high ceilings
- Original kitchen and bathroom upstairs; second bathroom below
- " Tiled utility space underneath plus laundry
- " Large backyard —ideal for children, pets or gardeners
- Oversized shed, carport, and excellent side access
- Ample off-street parking for a boat, trailer or caravan
- Air conditioning and ceiling fans throughout
- Solar hot water system
- Walk to schools, transport, shops, parks and more
- Close to major hospitals and only 12km to Brisbane CBD

This is a rare opportunity to secure a well-located property brimming with potential and perfectly positioned for capital growth. Whether you're looking to nest, invest, or build —don't miss this one! Contact AMANDA WATERS today for further details or to arrange your inspection.

MORE DETAILS

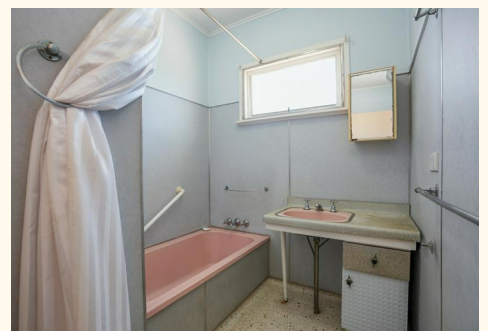
Property ID	3B4CF1R
Property Type	House
Land Area	746 m2
Including	Remote Garage

Amanda Waters 0402 109 955

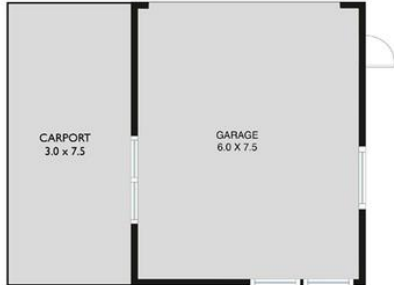
Principal and Licensed Real Estate Agent | awaters@ljhooker.com.au

LJ Hooker Aspley | Chermshire (07) 3263 6022

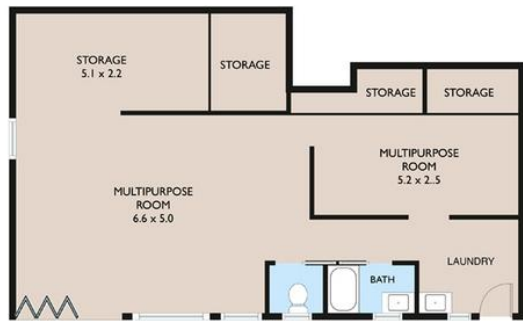
1359 Gympie Road, ASPLEY QLD 4034
aspley.ljhooker.com.au | aspley@ljhooker.com.au



269 Maundrell Terrace, Aspley



(Not in Position)



GROUND FLOOR



FIRST FLOOR

Internal 115m² | External 21m² | Total 136m²



Floor plans are intended to give a general indication of the proposed layout only. All images and dimensions are not intended to form part any contract or warranty.