



## Aspley, 14 Pie Street

**RED HOT ASPLEY OPPORTUNITY- Delightful Brick Home on 632m2 with Subdivision Upside!**

An incredible opportunity to invest in your future, you will be hard pressed to find a property that offers a better blend of potential and opportunity, AND an amazing location to match! Nestled within a brilliant location within an easy walk to the Chermide Markets Complex (Woolworths), Westfield Chermide, Prince Charles and St. Vincent's Hospitals, parks, schools and walking tracks, this fantastic home presents a magical opportunity to purchase an immaculate highset brick home, on a generous 632m2, level block, in one of the Northside's HOTTEST pockets!

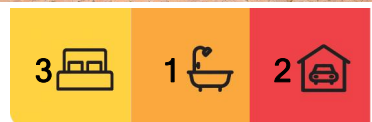
Brimming with genuine charm, and complimented by an extremely comfortable floor plan, you will fall in love with this gem as soon as you see it...

Things you will love-

\* The generous 632m2 level block offers potential for future subdivision if desired (STCA)



**Disclaimer:** All information contained therein is gathered from relevant third parties sources. We cannot guarantee or give any warranty about the information provided. Interested parties must rely solely on their own enquiries.



**For Sale**  
UNDER CONTRACT

**View**  
[ljhooker.com.au/3937F1R](http://ljhooker.com.au/3937F1R)

**Contact**  
**Amanda Waters**  
0402 109 955  
[awaters@ljhooker.com.au](mailto:awaters@ljhooker.com.au)

**LJ Hooker Aspley | Chermide**  
**(07) 3263 6022**



- \* An immaculate brick home that has been lovingly maintained and cared for by its long term owner, ensuring it's a wonderful home or an easy care investment!
- \* Leave the car at home and walk to shopping, hospitals, bus, school & parks!
- \* Plenty of potential to complete an easy transformation and to polish the hardwood flooring and paint the home internally
- \* Premium north/south aspect
- \* The home flows effortlessly to reveal a superb floorplan, encompassing internal stairs and brilliant space across two levels
- \* A gorgeous front veranda provides a lovely space to relax after work with a twilight drink, or to enjoy a morning coffee
- \* The immaculate original kitchen is very functional "as is" or can be updated if desired
- \* The 3 bedrooms are all of a very generous size, and two of the bedrooms feature built in wardrobes
- \* A very tidy main bathroom and separate toilet
- \* Generous lounge and dining areas upstairs PLUS wonderful, additional usable space downstairs (home office, teenage retreat or dual occupancy)
- \* Secure lock up garaging for 1-2 vehicles plus plenty of additional off-street parking space
- \* Beautifully level and lovely backyard —the perfect oasis for children or pets to enjoy

Make no mistake, this is an incredibly appealing home or an astute investment option situated within a sought after and central position so close to the City, great public transport options, quality schools, child care centres, Airport and walking distance to stunning parkland, play grounds and walking tracks. The Westfield Chermside shopping, dining and entertainment precinct is just moments away too! There really is so much to love here. Genuine buyers are urged to inspect promptly to avoid disappointment....

#### QUICK FACTS:

Land size: 632m2  
 School catchments: Aspley State School & Craigslea State High School  
 Council Rates: \$470.95 per quarter  
 Rental appraisal: Circa \$650 per week  
 Building & pest report available upon request

## More About this Property

Property ID	3937F1R
Property Type	House
Land Area	632 m²
Including	Courtyard Balcony Floorboards Workshop Secure Parking

**Amanda Waters 0402 109 955**  
 Principal and Licensed Real Estate Agent | awaters@ljhooker.com.au

**LJ Hooker Aspley | Chermside (07) 3263 6022**  
 1359 Gympie Road, ASPLEY QLD 4034  
 aspley.ljhooker.com.au | aspley@ljhooker.com.au

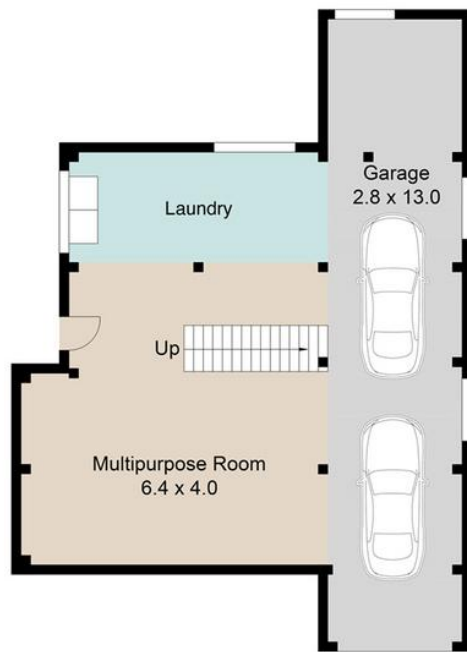


**Disclaimer:** All information contained therein is gathered from relevant third parties sources. We cannot guarantee or give any warranty about the information provided. Interested parties must rely solely on their own enquiries.



**LJ Hooker Aspley | Chermside**  
**(07) 3263 6022**

**14 Pie Street**



Ground Level



Upper Level

**Internal 182 m<sup>2</sup> | External 10 m<sup>2</sup> | Total 192 m<sup>2</sup>**

Floor plans are intended to give a general indication of the proposed layout only. All images and dimensions are not intended to form part any contract or warranty.

