



2 Hart Street, Ashmore

## Boutique 4 Bedroom Townhouses less than 8km from Gold Coast Beaches

Discover 'De Hart', a thoughtfully curated residential community located at 2 Hart Street, Ashmore where contemporary design meets refined architecture, a statement of modern luxury living.

De Hart represents a diverse mix of exceptional, large residences to suit every lifestyle - inclusive of 20 two-storey and 14 three-storey Townhouses.




This exclusive development in a prime location features 34 townhouses architecturally designed offering a harmonious blend of modern living, convenience, and tranquility in one of the Gold Coast's most sought-after suburbs.

Each home is crafted with attention to detail, featuring energy-efficient inclusions, aesthetic, and a refined coastal aesthetic.

### Project Overview:

- Total 34 Townhouses in exclusive, low-density community
- 2 level homes: 4 bedrooms - 2.5 bathrooms - 2 car garage

All information contained therein is gathered from relevant third parties sources. We cannot guarantee or give any warranty about the information provided. Interested parties must rely solely on their own enquiries.

4  3  2 

**FOR SALE**  
Contact Agent

**VIEW**  
By Appointment

**AGENTS**  
Julian Kannis  
041 363 5551  
julian.kannis@ljhooker.com.au

Ben Latimer  
0402 921 314  
blatimer.southport@ljhooker.com.au

**AGENCY**  
LJ Hooker Southport  
(07) 5591 5222

 **LJ Hooker**

- 3 level homes: 4 bedrooms - 3 bathrooms - 3 car garage
- 183 to 275 sqm
- 2.65m - 2.7m ceilings
- Body Corporate levies approx. \$78/week
- Council and Water rates are anticipated to be approx. \$3,500 per annum
- Completion expected date - November 2026

Perfectly positioned in Ashmore, De Hart offers a lifestyle defined by connection and ease.

De Hart is progressing on schedule, with completion anticipated in 2026. Every stage of the project has been meticulously planned to deliver a seamless construction journey, balancing efficiency with uncompromising attention to detail.

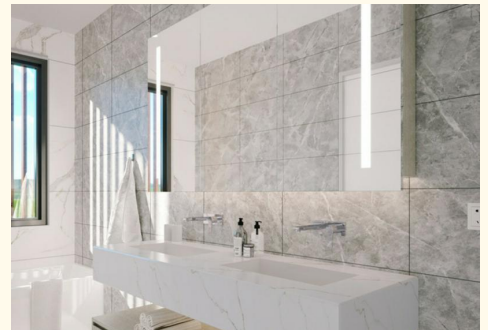
A unique opportunity, enquire now for more information and availability.

## MORE DETAILS

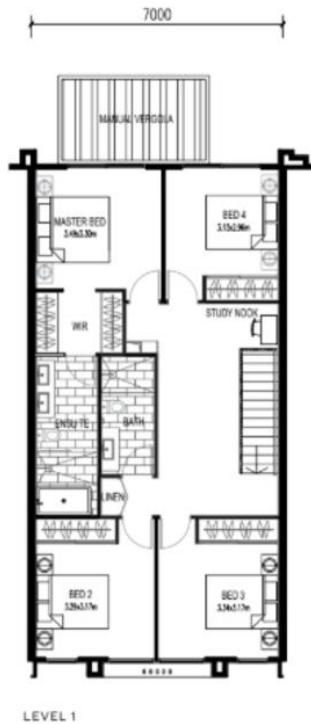
Property ID                      10QCF4K  
 Property Type                 Townhouse

**Julian Kannis 041 363 5551**  
 Sales Specialist | [julian.kannis@ljhooker.com.au](mailto:julian.kannis@ljhooker.com.au)  
**Ben Latimer 0402 921 314**  
 Director/Sales Consultant | [blatimer.southport@ljhooker.com.au](mailto:blatimer.southport@ljhooker.com.au)

**LJ Hooker Southport (07) 5591 5222**  
 2308-2309 Level 3 Southport Central, Tower 2, 5 Lawson Street,  
 SOUTHPORT QLD 4215  
[southport.ljhooker.com.au](http://southport.ljhooker.com.au) | [southport@ljhooker.com.au](mailto:southport@ljhooker.com.au)

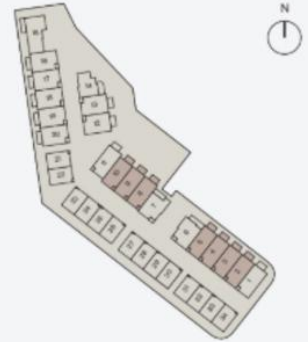


1-2 HART ST, ASHMORE QLD 4214



## Type B

BED	4
BATH	2.5
CARPARK	2



UNIT	INTERNAL AREA	EXTERNAL AREA	TOTAL AREA	EXCLUSIVE AREA
2	187m <sup>2</sup>	13m <sup>2</sup>	200m <sup>2</sup>	10m <sup>2</sup>
3	187m <sup>2</sup>	13m <sup>2</sup>	200m <sup>2</sup>	10m <sup>2</sup>
4	187m <sup>2</sup>	13m <sup>2</sup>	200m <sup>2</sup>	10m <sup>2</sup>
5	187m <sup>2</sup>	13m <sup>2</sup>	200m <sup>2</sup>	10m <sup>2</sup>
8	187m <sup>2</sup>	13m <sup>2</sup>	200m <sup>2</sup>	14m <sup>2</sup>
9	187m <sup>2</sup>	13m <sup>2</sup>	200m <sup>2</sup>	14m <sup>2</sup>
10	187m <sup>2</sup>	13m <sup>2</sup>	200m <sup>2</sup>	14m <sup>2</sup>

DE HART

All information contained therein is gathered from relevant third parties sources. We cannot guarantee or give any warranty about the information provided. Interested parties must rely solely on their own enquiries.