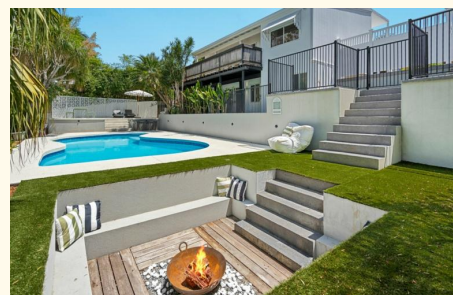


Sold



8 Milparinka Terrace, Ashmore

Casa al Sole —Modern Coastal Oasis

Welcome to 'Casa al Sole' 8 Milparinka Terrace, Ashmore. A modern coastal haven offering space, flexibility, and effortless resort-style living in one of the Gold Coast's most desirable family suburbs.

Positioned on a secure, private block, this rebuilt and reimagined residence blends designer sophistication with the warmth of relaxed family living.

Step inside to discover light-filled open-plan interiors, soaring vaulted ceilings, and timber floors flowing seamlessly through the living, dining, and entertaining zones. The designer kitchen features stone benchtops, premium appliances and a butler's pantry with abundant storage - perfect for the passionate home chef or entertainer.

Slide open the doors and embrace indoor-outdoor living on your private sun-drenched deck or retreat downstairs to your own tropical sanctuary. The resort-style pool area with sunken fire pit, lush gardens and multiple alfresco zones creates a private paradise for entertaining or unwinding in style.

The versatile lower level offers a fully self-contained multi-purpose

4 🏠 3 🚗 2 🚘

FOR SALE

A Golden Opportunity in Ashmore

AGENTS

Dean Muldoon
0401 070 792
dean.muldoon@ljhooker.com.au

Matt Conduit
0418 741 949
matt.conduit@ljhooker.com.au

AGENCY

LJ Hooker Broadbeach
(07) 5531 6688

All information contained therein is gathered from relevant third parties sources. We cannot guarantee or give any warranty about the information provided. Interested parties must rely solely on their own enquiries.



suite with its own entrance, kitchenette, bathroom, and laundry - ideal for multi-generational living, guest accommodation, home business, or income potential (STCA).

Key Features:

- 4 spacious bedrooms, all with vaulted ceilings, including master suite with walk-in robe and ensuite
- 3 beautifully appointed bathrooms with premium fittings and finishes
- Designer kitchen with stone benchtops, induction cooktop, and butler's pantry
- Open-plan living with vaulted ceilings and timber floors
- Fully self-contained lower level - perfect for rumpus room or dual living STCA.
- Sparkling private in-ground pool, sunken fire pit, and multiple entertaining areas
- Dual laundries offering ultimate flexibility
- Off-street parking for up to 3 vehicles - ideal for a boat, trailer, or caravan
- Peaceful, family-friendly street close to elite schools, parks, and shopping precincts

Location & Lifestyle:

Perfectly positioned in the heart of Ashmore, this home offers the ultimate balance of privacy and convenience.

Enjoy being just minutes from Trinity Lutheran College, Emmanuel College, Benowa High, Ashmore Primary, major shopping centres, medical precincts, and the world-famous beaches of Surfers Paradise.

Casa al Sole delivers modern coastal living at its finest - stylish, spacious, and ready to move straight in.

MORE DETAILS

Property ID P9BHHD
Property Type House

Dean Muldoon 0401 070 792

Director | dean.muldoon@ljhooker.com.au

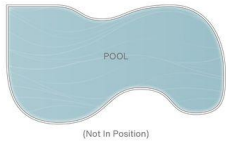
Matt Conduit 0418 741 949

Director / Licensee | matt.conduit@ljhooker.com.au

LJ Hooker Broadbeach (07) 5531 6688

Shop 14, 90-104 Surf Parade, BROADBEACH QLD 4218
broadbeach.ljhooker.com.au | sales.broadbeach@ljhooker.com.au

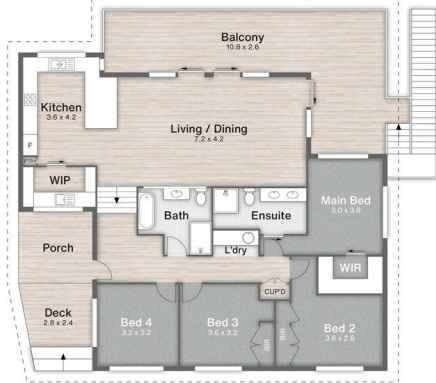




(Not In Position)



GROUND FLOOR



FIRST FLOOR



Milparinka Terrace

- 1 Deck
- 2 Porch
- 3 Balcony
- 4 Pool
- 5 Fire Pit
- 6 Entertainment Area

8 Milparinka Terrace **ASHMORE**

4 | 3 | 278m² | 830m²



DISCLAIMER
This is not a legal document; all measurements and dimensions are approximate and are subject to errors, omission or misstatement. No liability will be accepted. Plans are shown for marketing purposes only.