

**Sold**



30 Murrumba Drive, Ashmore

## Effortless Family Entertaining with Space to Grow

Designed for families who love to gather, relax and evolve, this beautifully updated Ashmore home delivers the perfect balance of immediate lifestyle enjoyment and long-term potential. Set on a generous 647sqm block, it's a home where weekends are spent by the pool, celebrations flow effortlessly outdoors and there's room for the family to grow for years to come.

At the heart of the home is an inviting, light-filled layout that brings everyone together. Open, airy living spaces connect seamlessly to a large covered entertaining deck, creating a natural extension of the home and the ideal setting for family barbecues, birthday parties or relaxed evenings with friends.

Outdoors, the near-new magnesium swimming pool becomes the centrepiece - a resort-style escape framed by a spacious backyard with plenty of room for kids to play, pets to roam or future enhancements to take shape. Whether you envision extending the home, adding additional living zones or creating your dream outdoor retreat, the space is here to make it happen (subject to DA approval).

### Feature Summary

All information contained therein is gathered from relevant third parties sources. We cannot guarantee or give any warranty about the information provided. Interested parties must rely solely on their own enquiries.

4 1 2

**FOR SALE**  
\$1,320,000

### AGENTS

Katriya De Vincentiis  
0410 620 845?  
kat.devincentiis@ljhooker.com.au

### AGENCY

LJ Hooker Ashmore  
(07) 5526 9722



- In ground magnesium pool
- Large covered entertaining deck
- Large, flat yard with established raised vegetable patch
- Tastefully renovated kitchen
- Master bedroom with walk-in robe
- Optional 4th bedroom or home office
- Modern bathroom and separate toilet
- Huge laundry/mud room with potential for second bathroom (subject to building approval)
- Light-filled open interior
- Ducted air-conditioning and fans throughout
- Solar power
- Outstanding future potential with ample space for extensions or upgrades (subject to DA approval).

#### Location & Lifestyle

Positioned in a highly sought-after Ashmore pocket, this home enjoys easy walking distance to quality schools and leafy parks, making daily family life simple and connected. Shopping centres, public transport and major hospitals are all close by, while the broader Gold Coast lifestyle - beaches, dining and amenities - remains easily accessible.

Homes that combine immediate lifestyle appeal with genuine future upside are increasingly rare. If you're looking for a place where your family can settle in now and grow into the future, this is an opportunity not to miss.

Disclaimer: Whilst every effort has been made to ensure the accuracy of these particulars, no warranty is given by the vendor or the agent as to their accuracy. Interested parties should not rely on these particulars as representations of fact but must instead satisfy themselves by inspection or otherwise.

#### MORE DETAILS

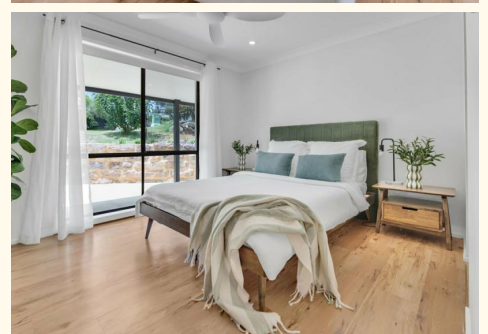
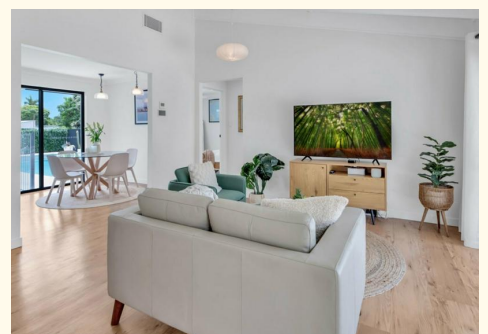
|               |                          |
|---------------|--------------------------|
| Property ID   | T4J0F                    |
| Property Type | House                    |
| Land Area     | 647 m2                   |
| Including     | Air Conditioning<br>Pool |

#### Katriya De Vincentiis 0410 620 845?

Sales Professional | [kat.devincentiis@ljhooker.com.au](mailto:kat.devincentiis@ljhooker.com.au)

#### LJ Hooker Ashmore (07) 5526 9722

167 Cotlew Street, ASHMORE QLD 4214  
[ashmore.ljhooker.com.au](http://ashmore.ljhooker.com.au) | [admin.ashmore@ljhooker.com.au](mailto:admin.ashmore@ljhooker.com.au)

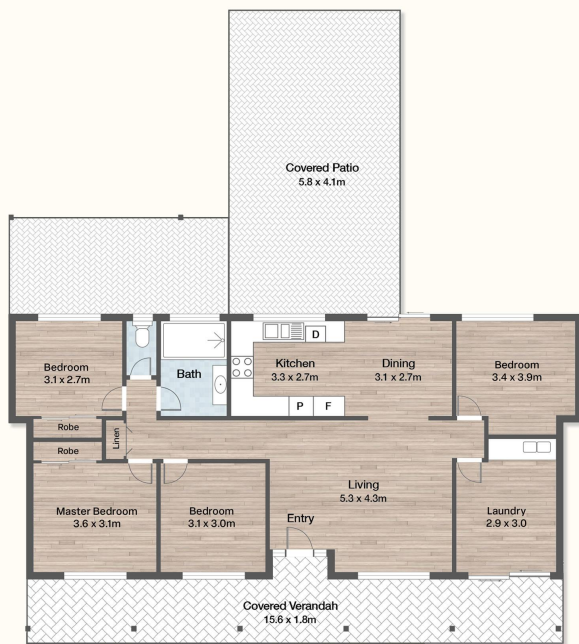


30 MURRUMBA DRIVE  
ASHMORE

4   
 1   
 2

|           |                   |
|-----------|-------------------|
| INTERNAL  | 143m <sup>2</sup> |
| EXTERNAL  | 73m <sup>2</sup>  |
| TOTAL     | 221m <sup>2</sup> |
| LAND SIZE | 647m <sup>2</sup> |

Katriya De Vincentiis  
0410 620 845



Measurements are approximate only  
 and no responsibility is taken  
 for any error, omission, or mis-statement.  
 This is for illustrative purposes only  
 and should be used as such by  
 any prospective purchaser.  
[visualmotion.com.au](http://visualmotion.com.au)